



# Windows-Based Terminal

## User's Manual



## TABLE OF CONTENTS

|                  |  |           |
|------------------|--|-----------|
| <b>CHAPTER 1</b> | <b>License Agreement .....</b>   | <b>2</b>  |
| <b>CHAPTER 2</b> | <b>Product Review .....</b>  | <b>5</b>  |
| 2.1              | WBTs.....  | 5         |
| 2.2              | Terminal Specifications .....  | 5         |
| 2.3              | Terminal Features .....  | 6         |
| 2.4              | Terminal Overview .....  | 6         |
| 2.4.1            | Connecting the Terminal .....  | 6         |
| 2.4.2            | Connector Descriptions.....  | 7         |
| <b>CHAPTER 3</b> | <b>Initial Terminal Setup .....</b>  | <b>10</b> |
| 3.1              | Hot Keys Functions .....   | 10        |
| 3.2              | Setup Wizard.....  | 10        |
| 3.2.1            | Network Configuration .....  | 11        |
| 3.2.1.1          | Use the IP information supplied by DHCP.....                               | 11        |
| 3.2.1.2          | Specify a static IP address.....   | 12        |
| 3.2.2            | Enable/Disable Name Resolution Services .....                              | 12        |
| 3.2.3            | Alternative Display Settings .....   | 13        |
| 3.2.4            | Local Printer Setup.....   | 14        |
| 3.2.5            | Select the Printer Port.....   | 14        |
| 3.2.6            | Select the Printer Model.....  | 15        |
| 3.2.6.1          | Select the Printer Model .....   | 15        |
| 3.2.6.2          | User Defined .....   | 17        |
| 3.2.7            | Finish the Setup Wizard .....  | 20        |
| <b>CHAPTER 4</b> | <b>Connections Management .....</b>  | <b>21</b> |
| 4.1              | Using the Connections Properties Sheet.....                                | 21        |
| 4.2              | Using the Configure Properties Sheet .....                                 | 21        |
| 4.3              | Creating New Connections .....   | 22        |
| 4.3.1            | Choosing a Connection Protocol .....                                       | 22        |
| 4.4              | RDP Connections.....   | 23        |
| 4.4.1            | General Tab.....   | 25        |
| 4.4.2            | Display Tab.....   | 25        |
| 4.4.3            | Local Resource Tab.....  | 26        |
| 4.4.4            | Programs Tab.....  | 26        |
| 4.4.5            | Experience Tab.....  | 27        |
| 4.5              | ICA Connections .....  | 27        |
| 4.5.1            | Creating a New ICA Connection Entry .....                                  | 27        |
| 4.5.2            | Connecting to a Citrix Server .....  | 31        |
| 4.5.3            | Changing a Connection Entry .....  | 32        |
| 4.5.3.1          | To change the properties of a connection entry .....                       | 32        |
| 4.5.3.2          | Specifying an Application to Run after Connecting to a Citrix Server ..... | 33        |
| 4.5.3.3          | Specifying Logon Information .....   | 33        |
| 4.5.3.4          | Changing the Window Properties .....                                       | 34        |
| 4.5.3.5          | Setting Connection Entry Options.....                                      | 34        |
| 4.5.3.6          | Changing the Title of the Connection Entry .....                           | 35        |
| 4.5.3.7          | Configuring Firewall Settings .....  | 35        |
| 4.6              | Remote Dial-Up/ Direct Cable Connection/ VPN Operations .....              | 37        |
| 4.6.1            | Remote Dial-Up Connection .....  | 37        |
| 4.6.2            | Direct Connection.....   | 41        |
| 4.6.3            | Virtual Private Network Connection .....                                   | 42        |

|                  |   |           |
|------------------|---|-----------|
| 4.7              | Microsoft Internet Explorer Connection .....                              | 43        |
| 4.7.1            | To Make a New Microsoft Internet Explorer Connection.....                 | 43        |
| 4.7.2            | To Start a Microsoft Internet Explorer Connection .....                   | 47        |
| 4.8              | Microsoft Media Player.....   | 47        |
| 4.8.1            | To Make a New Microsoft Media Player Connection .....                     | 47        |
| 4.8.2            | The MediaPlayer Editor V2.0.....  | 48        |
| 4.8.3            | To Start a Microsoft Media Player Connection.....                         | 48        |
| <b>CHAPTER 5</b> | <b>Advanced Function for Connections .....</b>                            | <b>49</b> |
| 5.1              | Multiple Auto Start-Up .....  | 49        |
| 5.2              | Multiple Auto Reconnect .....   | 49        |
| <b>CHAPTER 6</b> | <b>Terminal Properties.....</b>   | <b>50</b> |
| 6.1              | General Tab .....   | 50        |
| 6.1.1            | Reset the terminal to factory default property settings .....             | 50        |
| 6.2              | Display Configuration .....   | 51        |
| 6.2.1            | Enable Screen Saver.....  | 51        |
| 6.3              | Control Panel Tab .....   | 52        |
| 6.3.1            | Printers Properties .....   | 52        |
| 6.3.1.1          | Select the Printer Model.....   | 53        |
| 6.3.2            | Keyboard Input.....   | 54        |
| 6.3.3            | Owner Properties .....  | 54        |
| 6.3.4            | System Properties.....  | 55        |
| 6.3.5            | Mouse Properties .....  | 57        |
| 6.3.6            | Volume & Sound Properties.....  | 57        |
| 6.3.7            | Date/Time Properties .....  | 59        |
| 6.3.8            | Storage Manager Properties.....   | 59        |
| 6.3.9            | Regional Setting Properties .....   | 59        |
| 6.3.10           | Network Status Properties .....   | 61        |
| 6.3.11           | Security Properties.....  | 62        |
| 6.3.12           | Ping Properties .....   | 63        |
| 6.3.13           | Application Properties.....   | 64        |
| 6.3.14           | Line Printer Daemon Setup .....   | 64        |
| 6.3.14.1         | Setup for LPD .....   | 64        |
| 6.3.14.2         | Add a remote printer.....   | 67        |
| 6.3.14.3         | LPD Printing.....   | 69        |
| 6.3.15           | Global ICA Client Settings .....  | 69        |
| 6.3.15.1         | Configuring Hotkeys .....   | 70        |
| 6.3.15.2         | Configuring Global Preferences .....                                      | 71        |
| 6.3.15.3         | Sever Location.....   | 72        |
| 6.3.15.4         | Firewall Settings .....   | 73        |
| 6.3.15.5         | PNLite Settings .....   | 74        |
| 6.3.16           | FTP Update.....   | 74        |
| 6.3.17           | Certificates.....   | 75        |
| 6.3.18           | Terminal Service Client License .....                                     | 75        |
| 6.3.19           | Touch Panel Settings .....  | 76        |
| 6.3.20           | Desktop Style .....   | 77        |
| <b>CHAPTER 7</b> | <b>Using ICA Local Printer .....</b>                                      | <b>78</b> |
| 7.1              | Mapping Client Printers on MetaFrame for Windows .....                    | 78        |
| 7.1.1            | To view mapped client printers when connected to a MetaFrame server ..... | 78        |
| 7.1.2            | To manually map a client printer on a MetaFrame server .....              | 78        |

|                  |  |    |
|------------------|--|----|
| <b>CHAPTER 8</b> | <b>Desktop Mode</b>                    |    |
| 8.1              | Control Panel .....                    | 79 |
| 8.1.1            | Display Properties .....               | 79 |
| 8.1.2            | General Properties .....               | 80 |
| 8.2              | Add a Connection .....                 | 80 |
| 8.3              | Advanced Function on Desktop Mode..... | 81 |
| 8.3.1            | Task Manager.....                      | 81 |
| 8.3.2            | Task Bar.....                          | 81 |
| 8.3.3            | Hot Key Functions .....                | 82 |

## Trademarks

ICA 3 is a registered trademark and MetaFrame is a trademark of Citrix Systems Inc.

Microsoft and Windows are registered trademarks of Microsoft Corporation.

All other products are trademarks and/or registered trademarks of their respective companies.

The Energy Star emblem does not represent endorsement of any product or service.

Specifications subject to change without notice.

## FCC Statement

This equipment has been tested and found to comply with the limits for either Class A or Class B digital devices, pursuant to Part 15 of the FCC Rules. These limits are designed to provide reasonable protection against harmful interference in a residential installation. This equipment generates, uses, and can radiate radio frequency energy and, if not installed and used in accordance with the instructions, may cause harmful interference to radio communications. However, there is no guarantee that interference will not occur in a particular installation. If this equipment does cause harmful interference to radio or television reception, which can be determined by turning the equipment off and on, the user is encouraged to try to correct the interference by one or more of the following measures:

- § Reorient or relocate the receiving antenna.
- § Increase the separation between the equipment and the receiver.
- § Connect the equipment into an outlet on a circuit different from that to which the receiver is connected.
- § Consult the dealer or an experienced radio/TV technician for help.

### **CAUTION**

Danger of explosion if battery is incorrectly replaced.  
Replace only with the same or equivalent type  
recommended by the manufacturer.  
Dispose of used batteries according  
to the manufacturer's instructions.

## License Agreement

YOU SHOULD CAREFULLY READ THE FOLLOWING TERMS AND CONDITIONS BEFORE USING THIS EQUIPMENT WHICH CONTAINS SOFTWARE IN A NON-VOLATILE FORMAT AND CERTAIN OTHER INTELLECTUAL PROPERTY (HEREAFTER "FIRMWARE"). USING THIS EQUIPMENT INDICATES YOUR ACCEPTANCE OF THE FOLLOWING TERMS AND CONDITIONS.

### Grant

You may use the Firmware in or in conjunction with the Equipment as provided to You. You may transfer ownership of the Equipment, including the right to use the Firmware to another party so long as that party agrees to accept these terms and conditions.

YOU MAY NOT USE, COPY, MODIFY, TRANSLATE OR TRANSFER THE FIRMWARE, OR MODIFICATION THEREOF, IN WHOLE OR IN PART, EXCEPT AS EXPRESSLY PROVIDED FOR IN THIS LICENSE. YOU MAY NOT DECOMPILE, REVERSE ENGINEER OR OTHERWISE DECODE OR ALTER THE SOFTWARE CONTAINED IN THE FIRMWARE.

### Limited Software Warranty and Disclaimer

We warrant that, for a period of ninety (90) days from the date of shipment, the Firmware will, under normal use, be free from defects in materials and workmanship in the EPROM (or similar storage device). The foregoing warranty shall not apply to any Firmware that has been used in violation of this Agreement. During this limited warranty period We will provide support by phone on a best-efforts basis. We may, in addition to the above, replace any defective Firmware with a functionally equivalent product. The foregoing shall be Your exclusive remedy for any breach of warranty hereunder. You assume responsibility for choosing the Equipment containing the Firmware to achieve your intended results, and for the installation, use and results obtained from the Equipment and Firmware.

EXCEPT FOR THE ABOVE EXPRESS LIMITED WARRANTIES, WE MAKE AND YOU RECEIVE NO WARRANTIES ON THE FIRMWARE, EXPRESS, IMPLIED, OR STATUTORY, OR IN ANY OTHER PROVISION OF THIS AGREEMENT OR COMMUNICATION WITH YOU, AND WE DISCLAIM ANY IMPLIED WARRANTIES OF MERCHANTABILITY, NON-INFRINGEMENT AND FITNESS FOR ANY PARTICULAR PURPOSE. WE DO NOT WARRANT THAT THE FUNCTIONS CONTAINED IN THE PRODUCT WILL MEET YOUR REQUIREMENTS OR THAT THE OPERATION WILL BE UNINTERRUPTED OR ERROR FREE.

SOME STATES DO NOT ALLOW LIMITATIONS ON HOW LONG AN IMPLIED WARRANTY LASTS SO THE ABOVE LIMITATION MAY NOT APPLY TO YOU. THIS WARRANTY GIVES YOU SPECIFIC LEGAL RIGHTS. YOU MAY ALSO HAVE OTHER RIGHTS WHICH VARY FROM STATE TO STATE.

### Limit of Liability

UNDER NO CIRCUMSTANCES SHALL WE BE LIABLE FOR LOSS OF DATA, COST OF COVER, OR ANY INCIDENTAL OR CONSEQUENTIAL DAMAGES, HOWEVER CAUSED AND ON ANY THEORY OF LIABILITY. THESE LIMITATIONS SHALL APPLY EVEN IF WE OR OUR RESELLERS HAVE BEEN ADVISED OF THE POSSIBILITY OF SUCH DAMAGES, AND NOTWITHSTANDING ANY FAILURE OF ESSENTIAL PURPOSE OF ANY LIMITED REMEDY PROVIDED HEREIN.

YOU AGREE THAT THESE ARE THE ONLY APPLICABLE TERMS OF AGREEMENT BETWEEN US COVERING FIRMWARE AND THAT THEY SUPERSEDE ANY OTHER COMMUNICATIONS (ORAL OR WRITTEN) BETWEEN US RELATING TO THE FIRMWARE.

### U.S. Government Restricted Rights

The Firmware is provided with RESTRICTED RIGHTS. Use, duplication or disclosure by the Government is subject to restrictions as set forth in subparagraph (c)(1)(ii) of the Rights in Technological Data and computer software clause at DFARS 252.227-7013 or in subparagraphs (c)(1) and (2) of the Commercial Computer Software-Restricted Rights at 8 C.F.R. 52-227-19 as applicable.

## **EULA for Microsoft® Windows® CE Operating System for Windows-based Terminal Devices Version 1.5**

### **IMPORTANT—READ CAREFULLY**

This End User License Agreement (EULA) is a legal agreement between you (either an individual or a single entity) and the manufacturer (MANUFACTURER) of the special purpose computing device (SYSTEM) you acquired which includes certain Microsoft software product(s) installed on the SYSTEM and/or included in the SYSTEM package (SOFTWARE). The SOFTWARE includes computer software, the associated media, any printed materials, and any online or electronic documentation. By installing, copying or otherwise using the SOFTWARE, you agree to be bound by the terms of this EULA. If you do not agree to the terms of this EULA, MANUFACTURER and Microsoft Licensing, Inc. (MS) are unwilling to license the SOFTWARE to you. In such event, you may not use or copy the SOFTWARE, and you should promptly contact MANUFACTURER for instructions on return of the unused product(s) for a refund.

### **Software License**

The SOFTWARE is protected by copyright laws and international copyright treaties, as well as other intellectual property laws and treaties. The SOFTWARE is licensed, not sold.

## 1. Grant of License

SOFTWARE includes software already installed on the SYSTEM (SYSTEM SOFTWARE) and, if included in the SYSTEM package, software contained on the CD-ROM disk and/or floppy disk(s) labeled "Desktop Software for Microsoft Windows CE" (DESKTOP SOFTWARE). This EULA grants you the following rights to the SOFTWARE:

### SYSTEM SOFTWARE

You may use the SYSTEM SOFTWARE only as installed in the SYSTEM.

### DESKTOP SOFTWARE

DESKTOP SOFTWARE might not be included with your SYSTEM. If DESKTOP SOFTWARE is included with your SYSTEM, you may install and use the component(s) of the DESKTOP SOFTWARE in accordance with the terms of the end user license agreement provided with such component(s). In the absence of a separate end user license agreement for particular component(s) of the DESKTOP SOFTWARE, you may install and use only one (1) copy of such component(s) on a single computer with which you use the SYSTEM.

### Server, Use of Windows CE Operating System for Windows-Based Terminal Devices with Microsoft Windows NT Server, Terminal Server Edition

If the SOFTWARE is Windows CE operating system for Windows-Based Terminal devices, the following special provisions apply. In order to use the SYSTEM in connection with Windows NT Terminal Server Edition, you must possess (1) a Client Access License for Windows NT Server, Terminal Server Edition and (2) an end user license for Windows NT Workstation or an end user license agreement for Windows NT Workstation for Windows-Based Terminal Devices (please refer to the end user license agreement for Windows NT Server, Terminal Server Edition for additional information). MANUFACTURER may have included a Certificate of Authenticity for Windows NT Workstation for Windows-Based Terminal Devices with the SYSTEM. In that case, this EULA constitutes an end user license for the version of Windows NT Workstation for Windows-Based Terminal Devices indicated on such Certificate of Authenticity.

### Back-up Copy

If MANUFACTURER has not included a back-up copy of the SYSTEM SOFTWARE with the SYSTEM, you may make a single back-up copy of the SYSTEM SOFTWARE. You may use the back-up copy solely for archival purposes.

## 2. Description of Other Rights and Limitations

### Speech/Handwriting Recognition

If the SYSTEM SOFTWARE includes speech and/or handwriting recognition component(s), you should understand that speech and handwriting recognition are inherently statistical processes; that recognition errors are inherent in the processes; that it is your responsibility to provide for handling such errors and to monitor the recognition processes and correct any errors. Neither MANUFACTURER nor its suppliers shall be liable for any damages arising out of errors in the speech and handwriting recognition processes.

### Limitations on Reverse Engineering, Decompilation and Disassembly

You may not reverse engineer, de-compile, or disassemble the SYSTEM SOFTWARE, except and only to the extent that such activity is expressly permitted by applicable law notwithstanding this limitation.

### Single SYSTEM

The SYSTEM SOFTWARE is licensed with the SYSTEM as a single integrated product. The SYSTEM SOFTWARE installed in Read Only Memory (ROM) of the SYSTEM may only be used as part of the SYSTEM.

### Single EULA

The package for the SYSTEM SOFTWARE may contain multiple versions of this EULA, such as multiple translations and/or multiple media versions (e.g., in the user documentation and in the software). Even if you receive multiple versions of the EULA, you are licensed to use only one (1) copy of the SYSTEM SOFTWARE.

### Rental

You may not rent or lease the SOFTWARE.

### Software Transfer

You may permanently transfer all of your rights under this EULA only as part of a sale or transfer of the SYSTEM, provided you retain no copies, you transfer all of the SOFTWARE (including all component parts, the media, any upgrades or backup copies, this EULA and, if applicable, the Certificate(s) of Authenticity), and the recipient agrees to the terms of this EULA. If the SOFTWARE is an upgrade, any transfer must include all prior versions of the SOFTWARE.

### Termination

Without prejudice to any other rights, MANUFACTURER or MS may terminate this EULA if you fail to comply with the terms and conditions of this EULA. In such event, you must destroy all copies of the SOFTWARE and all of its component parts.

## 3. Upgrades

If the SYSTEM SOFTWARE and this EULA are provided separate from the SYSTEM by MANUFACTURER and the SYSTEM SOFTWARE is on a ROM chip, CD ROM disk(s) or floppy disk(s), and labeled "For ROM Upgrade Purposes Only" ("ROM Upgrade"), you may install one copy of the ROM Upgrade onto the SYSTEM as a replacement copy for the SYSTEM SOFTWARE originally installed on the SYSTEM and use it in accordance with Section 1 of this EULA.

## 4. Copyright

All title and copyrights in and to the SOFTWARE (including but not limited to any images, photographs, animations, video, audio, music, text and "applets," incorporated into the SOFTWARE), the accompanying printed materials, and any copy of the SOFTWARE, are owned by MS or its suppliers (including Microsoft Corporation). You may not copy the printed materials accompanying the SOFTWARE. All rights not specifically granted under this EULA are reserved by MS and its suppliers (including Microsoft Corporation).

## 5. Product Support

Product support for the SOFTWARE is not provided by MS, its parent corporation, Microsoft Corporation, or their affiliates or subsidiaries. For product support, please refer to MANUFACTURER's support number provided in the documentation for the SYSTEM. Should you have any questions



concerning this EULA, or if you desire to contact MANUFACTURER for any other reason, please refer to the address provided in the documentation for the SYSTEM.

## 6. Export Restrictions

You agree that you will not export or re-export the SOFTWARE to any country, person, or entity subject to U.S. export restrictions. You specifically agree not to export or re-export the SOFTWARE: (i) to any country to which the U.S. has embargoed or restricted the export of goods or services, which as of March 1998 include, but are not necessarily limited to Cuba, Iran, Iraq, Libya, North Korea, Sudan and Syria, or to any national of any such country, wherever located, who intends to transmit or transport the products back to such country; (ii) to any person or entity who you know or have reason to know will utilize the SOFTWARE or portion thereof in the design, development or production of nuclear, chemical or biological weapons; or (iii) to any person or entity who has been prohibited from participating in U.S. export transactions by any federal agency of the U.S. government.

If the SOFTWARE is labeled "North America Only Version" above, on the Product Identification Card, or on the SOFTWARE packaging or other written materials, then the following applies: The SOFTWARE is intended for distribution only in the United States, its territories and possessions (including Puerto Rico, Guam, and U.S. Virgin Islands) and Canada. Export of the SOFTWARE from the United States is regulated under "EI controls" of the Export Administration Regulations (EAR, 15 CFR 730-744) of the U.S. Commerce Department, Bureau of Export Administration (BXA). A license is required to export the SOFTWARE outside the United States or Canada. You agree that you will not directly or indirectly, export or re-export the SOFTWARE (or portions thereof) to any country, other than Canada, or to any person or entity subject to U.S. export restrictions without first obtaining a Commerce Department export license. You warrant and represent that neither the BXA nor any other U.S. federal agency has suspended, revoked or denied your export privileges.

## 7. Note on Java Support

The SYSTEM SOFTWARE may contain support for programs written in Java. Java technology is not fault tolerant and is not

**PERFORMANCE OF THE SOFTWARE IS WITH YOU.**

## No Liability for Consequential Damages

**MANUFACTURER OR MANUFACTURER'S SUPPLIERS, INCLUDING MS AND ITS SUPPLIERS, SHALL NOT BE HELD TO ANY LIABILITY FOR ANY DAMAGES SUFFERED OR INCURRED BY THE END USER (INCLUDING, BUT NOT LIMITED TO, GENERAL, SPECIAL, CONSEQUENTIAL OR INCIDENTAL DAMAGES INCLUDING DAMAGES FOR LOSS OF BUSINESS PROFITS, BUSINESS INTERRUPTION, LOSS OF BUSINESS INFORMATION AND THE LIKE), ARISING FROM OR IN CONNECTION WITH THE DELIVERY, USE OR PERFORMANCE OF THE SOFTWARE.**

If you acquired this EULA in the United States, this EULA is governed by the laws of the State of Washington.

If you acquired this EULA in Canada, this EULA is governed by the laws of the Province of Ontario, Canada. Each of the parties hereto irrevocably attorns to the jurisdiction of the courts of the Province of Ontario and further agrees to commence any litigation which may arise hereunder in the courts located in the Judicial District of York, Province of Ontario.

If this EULA was acquired outside the United States, then local law may apply.

Should you have any questions concerning this EULA, please contact the MANUFACTURER of your SYSTEM.

designed, manufactured, or intended for use or resale as on-line control equipment in hazardous environments requiring fail-safe performance, such as in the operation of nuclear facilities, aircraft navigation or communication systems, air traffic control, direct life support machines, or weapons systems, in which the failure of Java technology could lead directly to death, personal injury, or severe physical or environmental damage.

## 8. Limited Warranty

### Limited Warranty

MANUFACTURER warrants that the SOFTWARE will perform substantially in accordance with the accompanying written materials for a period of ninety (90) days from the date of receipt. Any implied warranties on the SOFTWARE are limited to ninety (90) days. Some states/jurisdictions do not allow limitations on duration of an implied warranty, so the above limitation may not apply to you.

### Customer Remedies

MANUFACTURER'S and its suppliers' entire liability and your exclusive remedy shall be, at MANUFACTURER'S option, either (a) return of the price paid, or (b) repair or replacement of the SOFTWARE that does not meet the above Limited Warranty and which is returned to MANUFACTURER with a copy of your receipt. This Limited Warranty is void if failure of the SOFTWARE has resulted from accident, abuse, or misapplication. Any replacement SOFTWARE will be warranted for the remainder of the original warranty period or thirty (30) days, whichever is longer.

### No Other Warranties

**EXCEPT AS EXPRESSLY PROVIDED IN THE LIMITED WARRANTY SECTION ABOVE, THE SOFTWARE IS PROVIDED TO THE END USER "AS IS" WITHOUT WARRANTY OF ANY KIND, EITHER EXPRESSED OR IMPLIED, INCLUDING, BUT NOT LIMITED TO, WARRANTIES OF NON-INFRINGEMENT, MERCHANTABILITY, AND/OR FITNESS FOR A PARTICULAR PURPOSE. THE ENTIRE RISK OF THE QUALITY AND THE PERFORMANCE OF THE SOFTWARE IS WITH YOU.**

## U.S. GOVERNMENT RESTRICTED RIGHTS

The SOFTWARE and documentation are provided with RESTRICTED RIGHTS. Use, duplication, or disclosure by the Government is subject to restrictions as set forth in subparagraph (c)(1)(ii) of the Rights in Technical Data and Computer Software clause at DFARS 252.227-7013 or subparagraphs (c)(1) and (2) of the Commercial Computer Software—Restricted Rights at 48 CFR 52.227-19, as applicable. MANUFACTURER is Microsoft Corporation/One Microsoft Way/Redmond, WA 98052-6399

## 2 Product Overview

### 2.1 WBTs

WBTs (Windows-based Terminals) are designed to connect to WTS (Windows Terminal Server) servers via RDP (Remote Desktop Protocol), or Windows NT applications server via ICA (Independent Computing Architecture). RDP is the Windows CE-based protocol for connecting to Windows terminal servers. ICA is a distributed presentation services protocol for Windows NT server, allowing an application's user interface to execute on a Windows-based terminal while the application's logic executes on the server.

The BOSSTX2B has no serial ports, only been supported three kinds of connections (RDP, ICA and **Remote Dial-Up/ Direct Cable Connection/ VPN Operations, without locale IE, locale Media Player and Emulations**), and has no smart card and PCMCIA drivers supported.

### 2.2 Terminal Specifications

|                                 |  |
|---------------------------------|--|
| CPU                             | SIS550/200MHz,   |
| RAM                             | 64MB SDRAM standard, expandable to 512MB   |
| Flash Memory                    | 32MB CF card standard, expandable to 512MB<br>Flash upgrade utility via Ethernet   |
| Resolution                      | Resolution up to 1280x1024 / 85 Hz SVGA 32 bit to True color.<br>16 million palette supports all VESA monitors   |
| Refresh Rate                    | Flicker-free, up to 85Hz   |
| Video Memory                    | Graphics utilizes system RAM   |
| Audio Support                   | Full 16 bit stereo FM synthesis  |
| Networking Protocols            | 10/100 Base T Fast Ethernet, Twisted Pair (RJ45)<br>TCP/IP with DNS, DHCP and PPP<br>Load balancing supported by Citrix ICA<br>Remote modem dial up with Citrix ICA  |
| Communications Protocols        | MS RDP / Citrix ICA  |
| One Parallel Port               | Bi-directional centronics compatible, DB-25  |
| One Display Port                | Analogue VGA type video output (DB-15)   |
| USB Port                        | Two USB ports  |
| Audio Port                      | Audio out,   |
| KB & Mouse Interface            | Enhanced PS/2 keyboard and mouse interface   |
| Operation System                | Microsoft Windows CE.NET   |
| Set-up & Configuration          | Local power-on boot, simple start-up wizard for set-up<br>Configurable automatic login, Multi-language KB support,<br>Multiple auto-startup support  |
| Server Operating System Support | <b>RDP :</b><br>Microsoft Windows NT4.0 + TSE.<br>Microsoft Windows 2000 Server Family.<br>Microsoft Windows 2003 Server Family.<br>Microsoft Windows XP with RDP protocol<br><b>ICA :</b><br>Citrix Winframe<br>Microsoft Windows NT4.0 + TSE+ Citrix Metaframe<br>Microsoft Windows 2000 + Citrix Metaframe.<br>Microsoft Windows 2000/ Windows 2003 + Citrix MetaframeXP. |
| Terminal Emulations Support     | Console ANSI, VT 420/320/220/100/52, Wyse 120/60/50+/325<br>TVI 925, TVI 910+, ADDS A2, IBM3270, IBM5250.  |

## 2.3 Terminal Features

|                                 |                            |
|---------------------------------|----------------------------|
| <b>Physical Characteristics</b> |                            |
| Height                          | 40 mm (1.57 in)            |
| Width                           | 188 mm (7.40 in)           |
| Depth                           | 136 mm (5.35 in)           |
| Net Weight                      | 1.10 kgs 2.43 lbs)         |
| Power Cord                      | 6 ft (1.83m)               |
| <b>Environmental</b>            |                            |
| Operating Temperature           | 5 to 40°C (41 to 104°F)    |
| Non-operating Temperature       | -40to 60°C (-40 to 150°F)  |
| Operating Humidity              | 20% to 80%, non-condensing |
| Operating Altitude              | 0 to 10,000 ft ASL         |
| Nonoperating Altitude           | 0 to 40,000 ft ASL         |
| <b>Regulatory</b>               |                            |
| EMC Terminal/Power Brick        | FCC B, CE, BSMI,           |
| Safety Power Brick              | UL1950, CB IEC60950.       |

## Installation

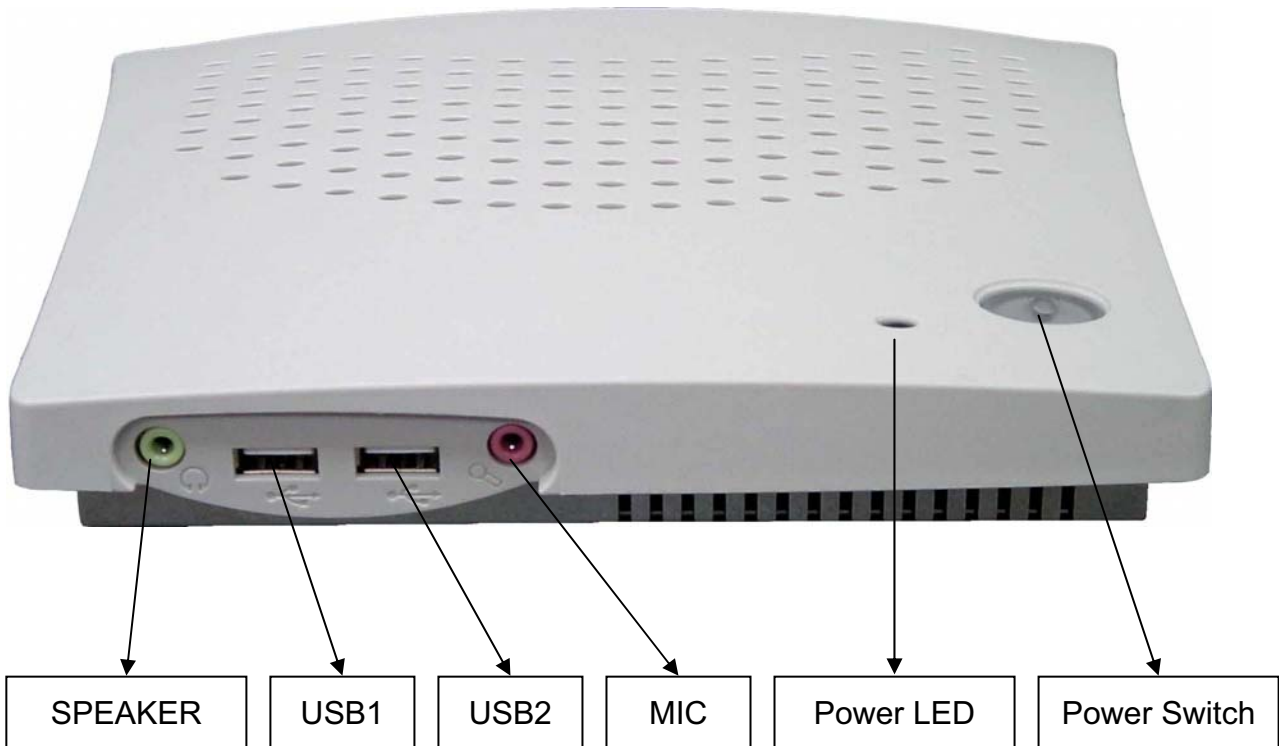
### 2.4 Terminal Overview



#### 2.4.1 Connecting the Terminal

Follow these instructions to connect the terminal to its peripheral devices:

- A. Connect the keyboard to the keyboard connector.
- B. Connect the mouse to the mouse connector.
- C. Connect the 10/100-T network cable to the RJ-45 network connector.
- D. Connect the power cord and the adapter to the power connector with DC Adapter.
- E. Connect the power cord to the power connector with DC Adapter..



## 2.4.2 Connector Descriptions

### USB Port

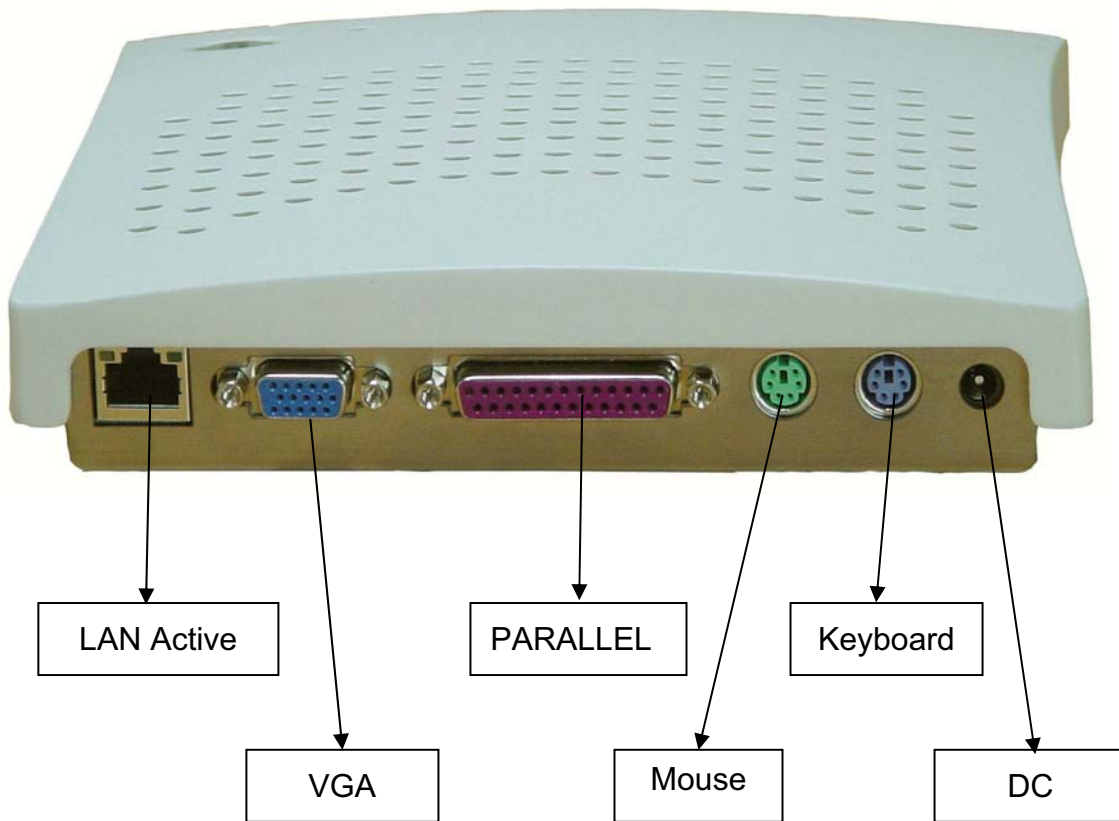
These connectors can be used for the USB devices.

### Audio output Connector

This connector is used to connect to an outward speaker.  
Micro phone input connector.

### Power Switch

The Power Switch key to turn ON/OFF the WBT.



#### LAN LED Indicators

This LED indicates the link (amber), activity (amber) status of network conditions. The detailed information is explained as follows:

- Link Indicator (amber )  
This LED lights to indicate a successful network connection.
- Activity Indicator (amber)  
This LED lights when there is network packets sent or received through the RJ-45 port.

#### VGA Connector

This connector is for displaying on a standard VGA compatible device.

#### Parallel Port Connector

This connector can be used for a printer connection.

#### PS/2 Mouse Connector

This connector is for a mouse using a PS/2 plug (mini DIN).

#### PS/2 Keyboard Connector

This connector is for a standard keyboard using a PS/2 plug (mini DIN).

#### Power Connector

This connector is for connecting the power cord with the terminal and the DC Adapter.

### Before you use the CE5.0...

## 1. Get the device and Boot loader ready

For using the F/W of CE5.0, You must update the Boot loader for CE5.0 to ensure all of the devices and function normally.

## 2. The differences between CE4.2 and CE5.0

- **Two user interface styles supported**
  - a. The CE5.0 support two user's modes, **WBT** mode and **Desktop** mode, Users can switch from one to another in **Control Panel**.
  
- **More device drivers have been supported in CE5.0**
  - a. The CE5.0 F/W with CE5.0 Boot loader support Card Bus (**WiFi, PB**).
  - b. The CE5.0 OS support Card Bus (32 bits/backward compatibility), **802.11g** (Driver required), **USB2.0** (CLE only), **RTL8169** (Giga bit), **RTL8180** (WiFi/PCI), **L2TP/PPPoE**.
  
- **More complete and friendly user interface have been supported in CE5.0**
  - a. The new function **L2TP** and **PPPoE** have been supported in **RAS** in the **Connection Manager**.
  - b. **Regional and Language Setting** support the **Regional setting** in the program format, **Number, Currency, Time and Date**; and also support the **Input Language** to select which keyboard layout You want to use.
  - c. The new function **Terminal License** have been supported in **Control Panel**, and the user can view and reset the terminal license there instead of reset it in **Application Properties**.
  - d. The new function **Touch Panel Settings** have been supported in **Control Panel**, and the user can set the touch panel model and alignment the panel there instead of do it in **Application Properties**.
  
- **The RDP version is upgraded from RDP 5.2 to RDP 5.5**
  
- **Complete update from CE4.2 to CE5.0**
  - a. The CE4.2 OS could be upgraded to CE5.0 by using **FTP Update**.

### 3 Initial Terminal Setup

The **Setup Wizard** is used for initial setup of the terminal's properties. The wizard runs when:

You turn on your terminal for the first time.

Your terminal has been restarted with selecting factory default setting.

A new image has been downloaded to your terminal.

#### 3.1 Hot-keys Functions

**Ctrl+Alt+Up/Down Arrow**

Use this function to switch between Active Connections.

**Ctrl+Alt+End:**

Use this function to go back to the Terminal Connection Manager.

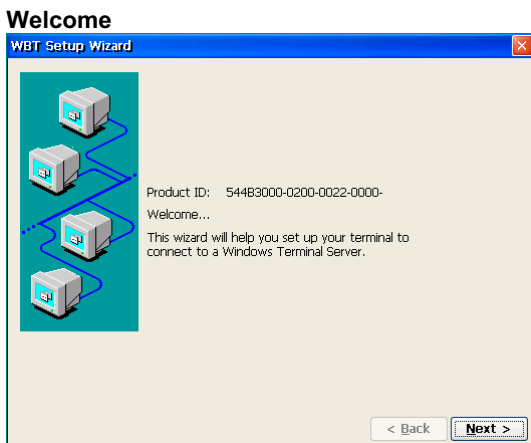
**Ctrl+Alt+L:**

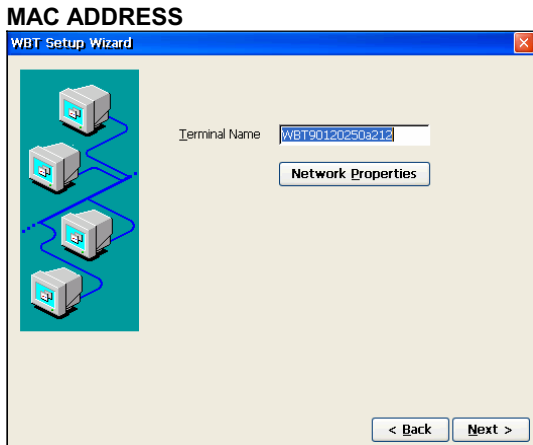
Use this function to activate or deactivate the energy saver.

#### 3.2 Setup Wizard

The **Setup Wizard** lets you set terminal network configuration and terminal display parameters. Any future changes can be made using the **Terminal Properties** dialog box. You can launch this dialog box anywhere in the program at any time by pressing the [F2] key.

There are seven dialog boxes that display in succession during the process. Each dialog box is self-explanatory. Some dialog boxes are informational and require no user input. Other dialog boxes will prompt you for network and display information.





### 3.2.1 Network Configuration

Network attached device must contain a unique network identifier. If the network is using TCP/IP as a communication protocol, these identifiers are called IP addresses. The following series of screens will allow you to choose from two different methods of assigning the IP addresses.

#### 3.2.1.1 Use the IP information supplied by DHCP

If your network provides DHCP (Dynamic Host Configuration Protocol) service and you want it to provide the terminals IP information, leave the first option selected.

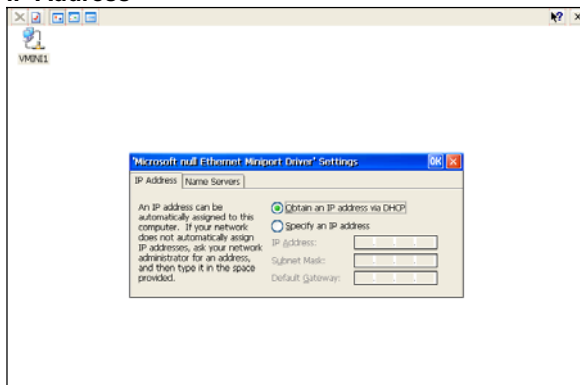
The terminal can get its IP address through a DHCP service by default. The DHCP will automatically assign an IP address that is drawn from a pool of available IP addresses, when a terminal unit is powered on and a request is broadcast over the network.

Use the IP information supplied by DHCP

If you need to specify static IP address for the terminal, select the second option.

The option is selected automatically if your network does not provide a DHCP service, or if the unit is not properly connected to the network. In these cases, leave the second option selected.

#### IP Address



**Note:** If your network does not provide a DHCP service but you get the screen shown above, make sure the terminal unit is properly connected to the network. Then restart it by cycling the power off and then on.



### 3.2.1.2 Specify a static IP address

If the method you selected on the prior screen was to enter a static IP address, the below screen will appear. You will be required to enter the following information onto the screen.

**IP address**

Required for identifying this unit to the network. The format will follow the standard addressing format.

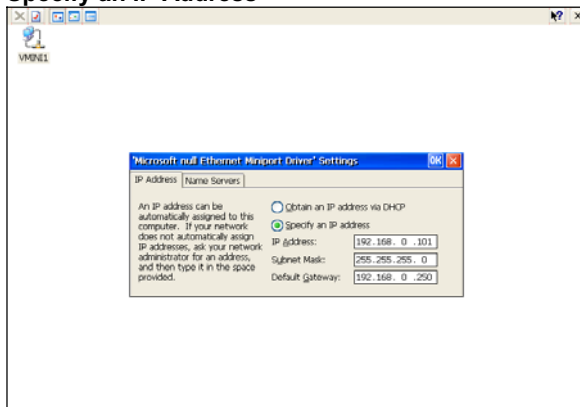
**Subnet Mask**

Required for designating which network the IP address is a part of.

**Gateway**

Optional address which identifies the machine through which a subnet communicates with another network.

#### Specify an IP Address

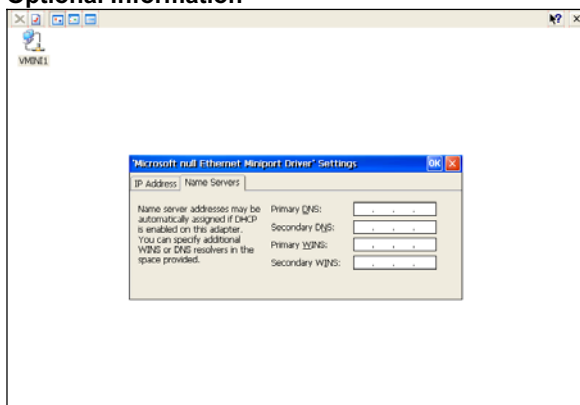


### 3.2.2 Enable/Disable Name Resolution Services

The screen shown below will appear only if you choose the Static IP Addressing method. The DHCP method will provide this information required using a name resolution service.

Terminal servers typically support both DNS (Domain Naming Service) and WINS (Windows Internet Naming Service) name resolution services. This screen allows the terminal unit to use one or both of these resolution services. To enable DNS, WINS, or both, check the corresponding box. In the text boxes, enter the following information as appropriate for each. Click Next.

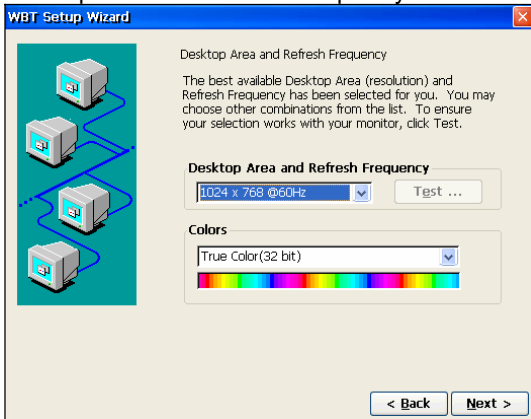
#### Optional Information



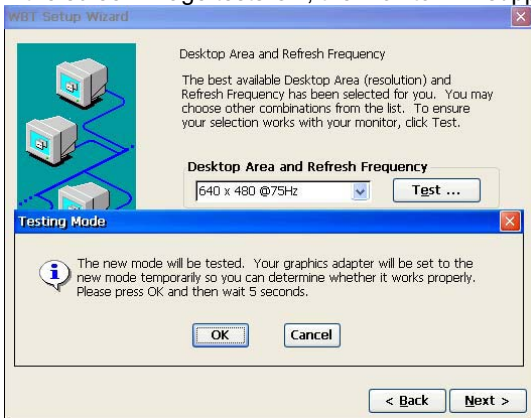
### 3.2.3 Alternative Display Settings

The monitor support several kinds of resolutions. If you want to test it, choose the desired resolution from the list box and click Test.

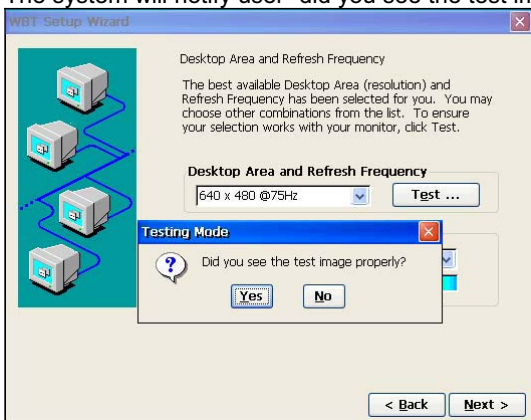
#### Desktop Area and Refresh Frequency



If the screen image tests OK, the monitor will support the selected resolution.



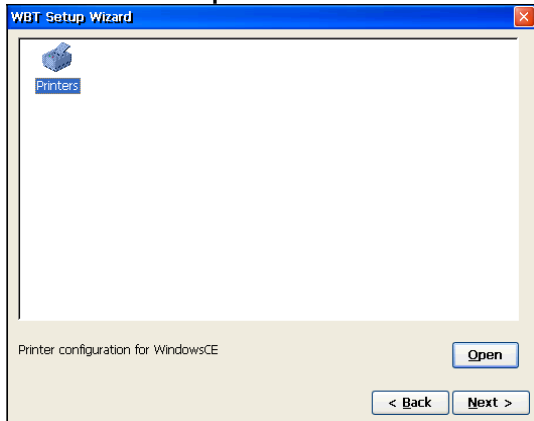
After the system implement testing new mode as user set up. The system will notify user "did you see the test image properly".



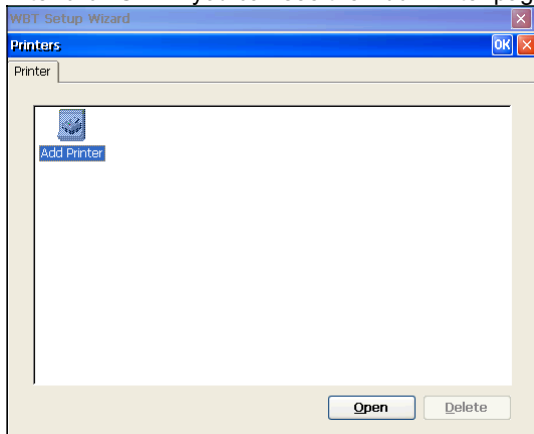
### 3.2.4 Local Printer Setup

The terminal supports Local Print. If you want to connect this terminal with a Local Printer, then click OPEN. If not, then click NEXT.

#### Local Printer Setup



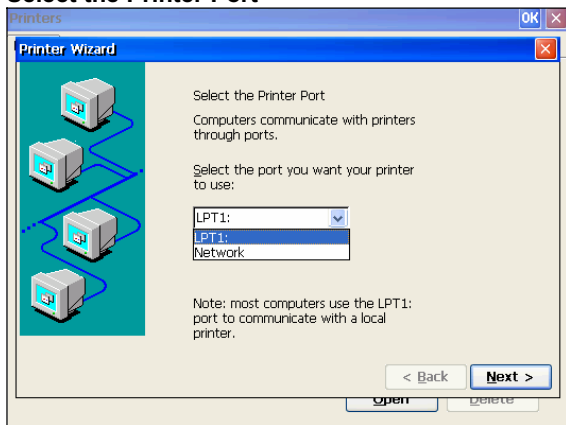
After click **OPEN** you can see the Add Printer page then click **OPEN** again you can see the Select the printer Port page.



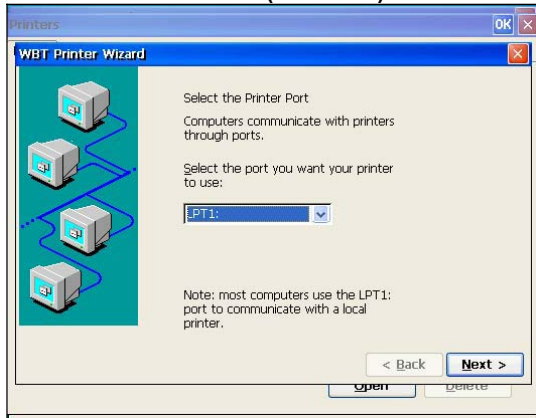
### 3.2.5 Select the Printer Port

Select one of the ports, LPT1, COM1 or COM2 port that you want to use to communicate with your local printer. Or you can select Network to set a network printer. When you select the COM1 or COM2 .You can also select the baud rate of COM1 or COM2 port.

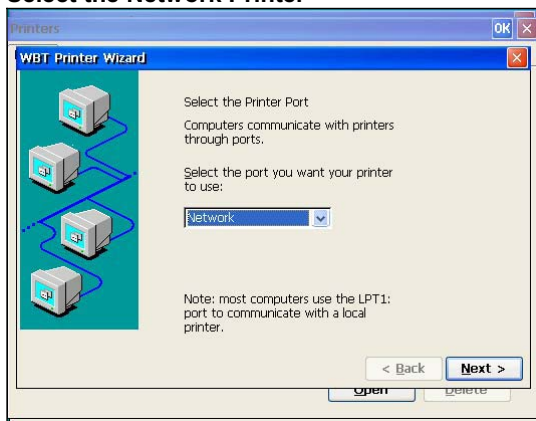
#### Select the Printer Port



### Select the Printer Port (For LPT1)



### Select the Network Printer

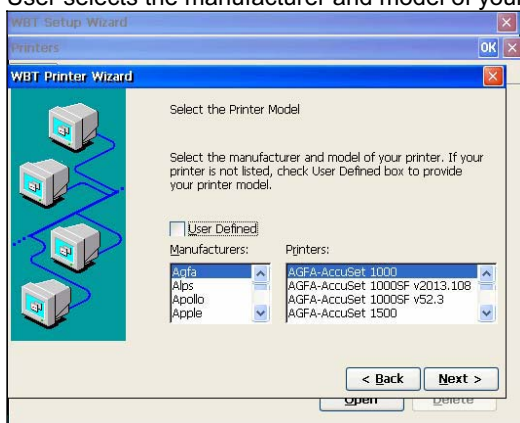


## 3.2.6 Select the Printer Model

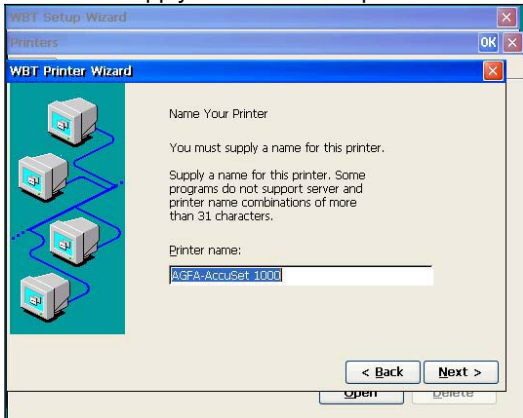
Select the manufacturer and model of your printer. If your printer name is not listed, check with your printer document and select one that is closer. The printer will then show on the dialog box of **Printers Properties** on **Terminal Properties** after press **[F2]** as shown in **chapter 6.5**.

### 3.2.6.1 Select the Printer Model

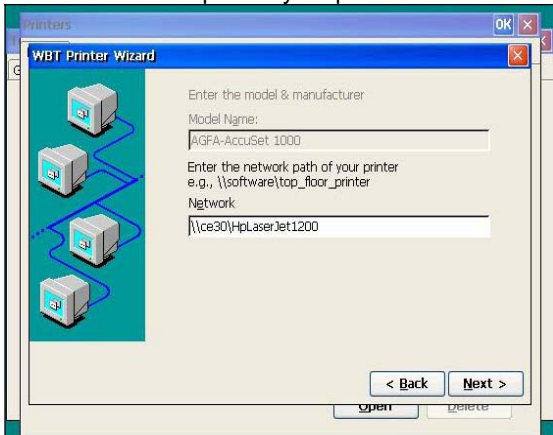
User selects the manufacturer and model of your printer then click **Next**.



**Name Your Printer for COM1, COM2, LPT1**  
 User must supply a name for this printer then click **Next**.

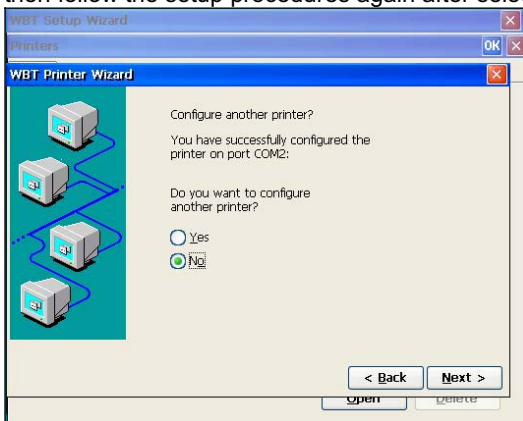


**Name Your Printer for Network**  
 Enter the Network path of your printer



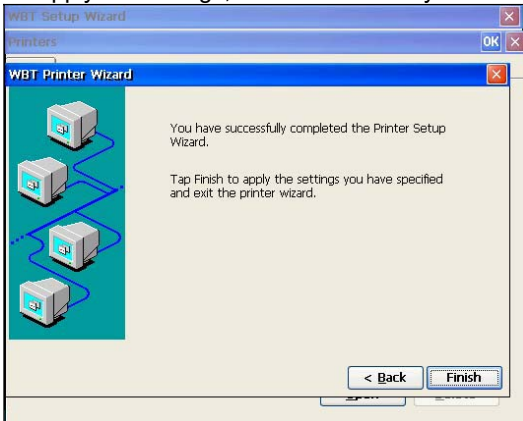
**Configure Another Printer**

The WBT will notify that "User has successfully configured the printer"  
 And ask if user want to configure another printer.  
 If does not please enable **No** and click **Next**. Or enable **Yes** to continue configure another printer.  
 The screen will go back to Select the Printer Port as shown on **page 15**,  
 then follow the setup procedures again after selecting the printer port.

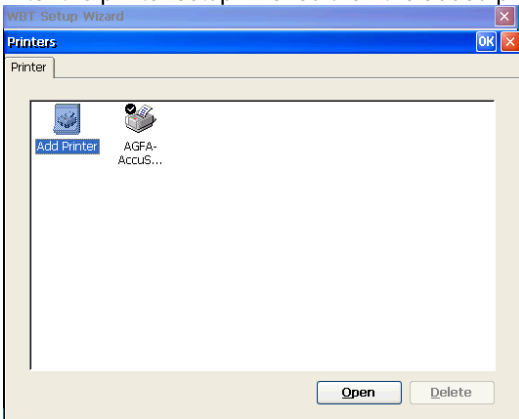


### Finish

To apply the settings, click **Finish** after you have finished the Printer Setup Wizard.

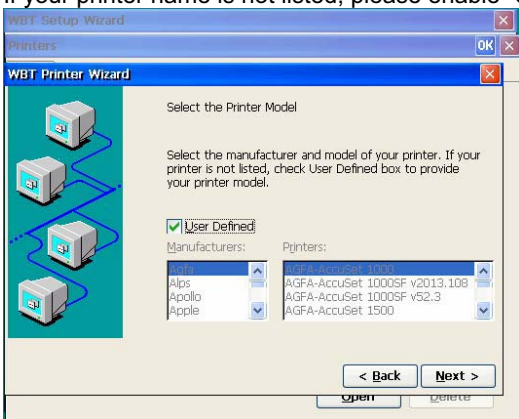


After the printer setup finished then the added printer model would be showed up.



### 3.2.6.2 User Defined

If your printer name is not listed, please enable "User Defined" to setup then click **Next**.

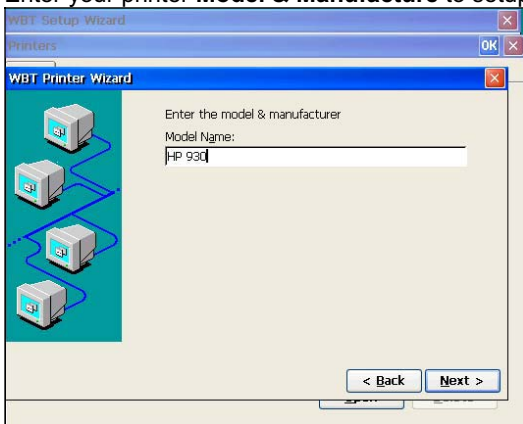



---

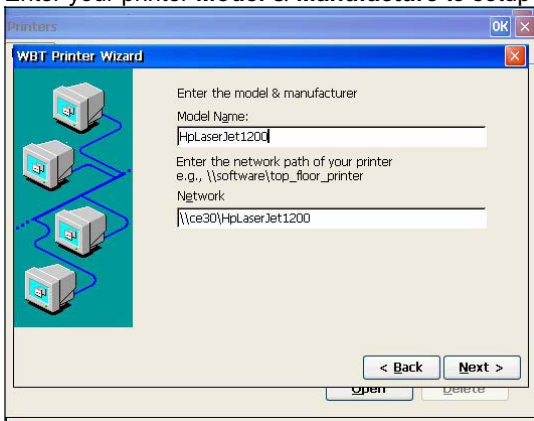
**Note:** User has to prior install the printer driver in server when performing the **User Defined**.

---

Enter your printer **Model & Manufacture** to setup then click **Next.**(Com1 , Com2, Lpt1)



Enter your printer **Model & Manufacture** to setup then click **Next.**(For Network Printer)

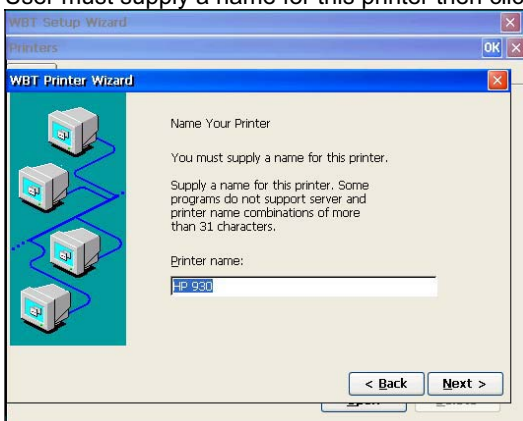



---

**Note:** The model name, which you type in the column, Should be identical with what you select from the name list in the server

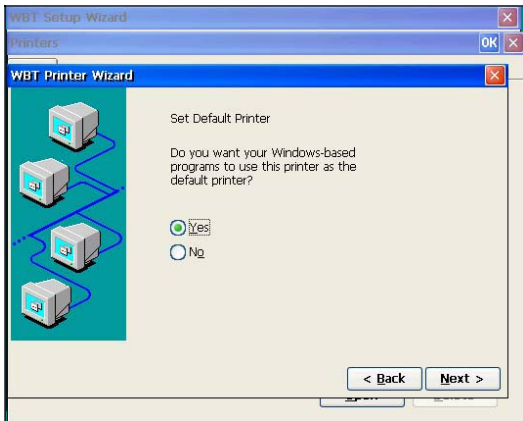
---

User must supply a name for this printer then click **Next.**



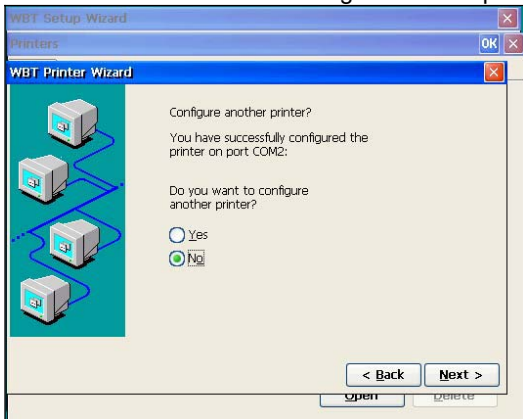
### Set Default Printer

User can choose using this printer as the default printer or not. Click **Next** to process.



The WBT will notify that “User has successfully configured the printer” and ask if user want to configure another printer.

If does not please enable **No** and click **Next**. Or enable **Yes** to continue configure another printer.

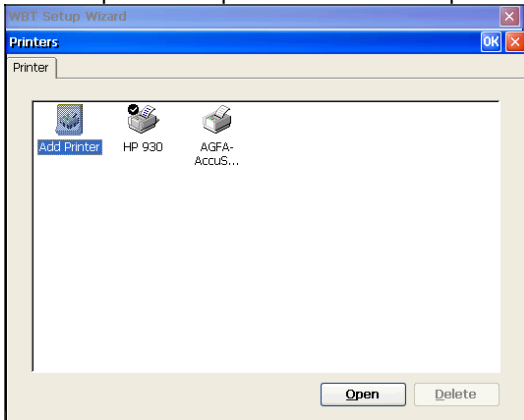


Then tap **Finish** to apply the setting.





After the printer setup OK then the added printer model would be showed up.

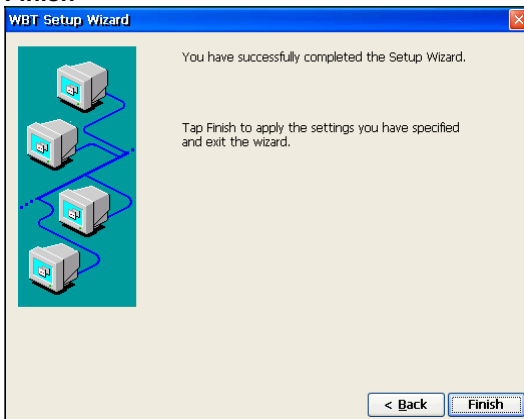


### 3.2.7 Finish the Setup Wizard

To review or change settings made on previous pages, click **Back**; to apply the settings, click **Finish**.

To change these settings after you have finished the Setup Wizard, press **[F2]** key to display the Terminal Properties sheet.

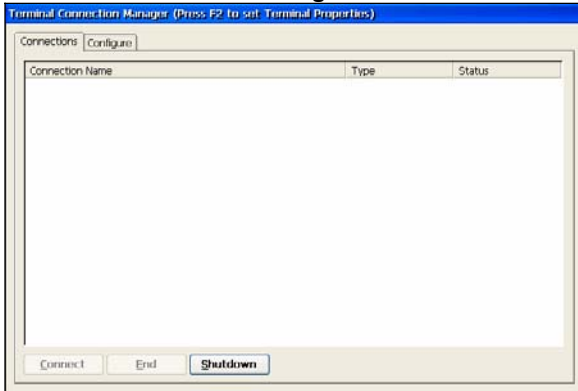
#### Finish



## 4 Connections Management

The **Terminal Connection Manager** dialog box is designed to help you manage your terminal's network connections. The dialog box displays after the terminal's initial splash screen, and consists of the **Connections** properties sheet and the **Configure** properties sheet. The following figure shows the **Terminal Connection Manager** dialog box.

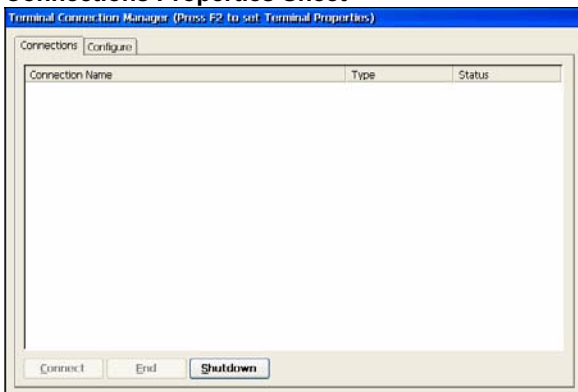
### Terminal Connection Manager



### 4.1 Using the Connections Properties Sheet

The functions of the **Connections** properties sheet are used to make (connect to) terminal network connections. The following figure shows the **Connections** properties sheet.

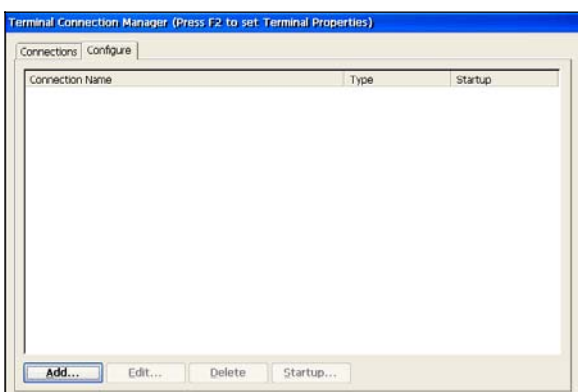
#### Connections Properties Sheet



### 4.2 Using the Configure Properties Sheet

The **Configure** properties sheet allows the user to **A**dd, **E**dit, **D**elete, and configure connections. The following figure shows the **Configure** properties sheet.

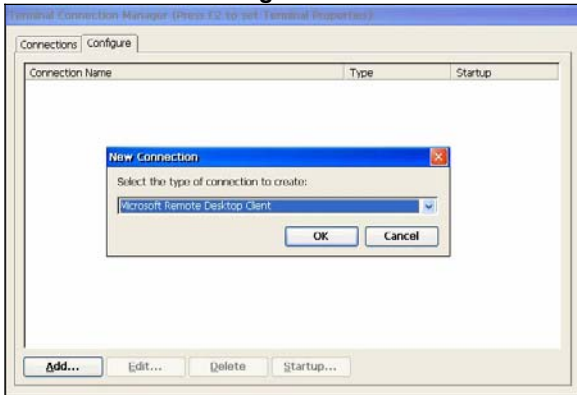
#### Configure Properties Sheet



### 4.3 Creating New Connections

The **New Connection** dialog box is used to create new network connections. This dialog box is invoked by: Clicking on the **Configure** tab in the **Terminal Connection Manager** dialog box. Clicking on **Add** command button on the **Configure** properties sheet. The following figure shows the **New Connection** dialog box.

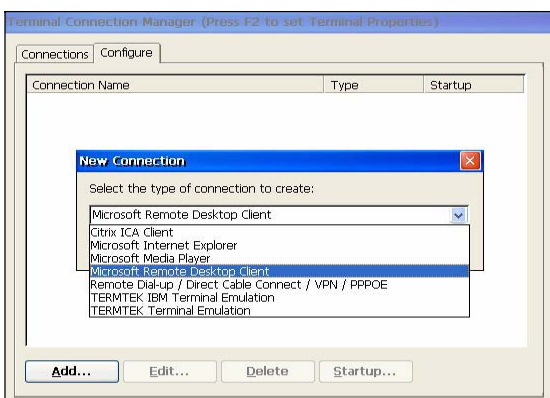
#### New Connection Dialog Box



#### 4.3.1 Choosing a Connection Protocol

Use the scroll list shown in the dialog box above to select the type of connection protocol you want. When you choose from the list above, you are deciding which connection protocol you want to use to connect to a server. Six selections are available:

- ◆ **Microsoft Remote Desktop Client**  
RDP (Remote Desktop Protocol) protocol, through which connects to a WBT (Windows-Based Terminal) server. Refer to chapter 4.4 for RDP Connections.
- ◆ **Citrix ICA Client**  
ICA (Independent Computing Architecture) protocol, through which connects to an ICA (Winframe/Metaframe) server. Refer to chapter 4.5 for ICA Connections.
- ◆ **Remote Dial-up / Direct Cable / VPN / PPPOE**  
Connects to remote server through PPP Dial-up applications or use direct RS232 cable connection. You can even have VPN connection. Refer to chapter 4.6 for all details.
- ◆ **Microsoft Internet Explorer**  
Connects to the Internet directly via embedded Internet Explorer. This function doesn't appear in all WBTs. Please make sure your WBT contains embedded IE and has 64MB RAM at least. Refer to chapter 4.7 for the Internet applications.
- ◆ **Microsoft Media Player**  
An applications winch you can connect to play a media & set the option in your WBT. Refer to chapter 4.8 for Media Player.
- ◆ **Terminal Emulation**  
Connects to multiple terminal emulation applications.
- ◆ **IBM Terminal Emulation**  
Connects to IBM-related terminal emulation applications.



## 4.4 RDP Connections

To create a new RDP connection, use the **Terminal Connection Wizard**. Make selections and enter the data in each dialog box.

Click on the **Next** command button to move to the next dialog box. When you are finished, the new connection will be added to the **Connection Name** list in the **Terminal Connection Manager**.

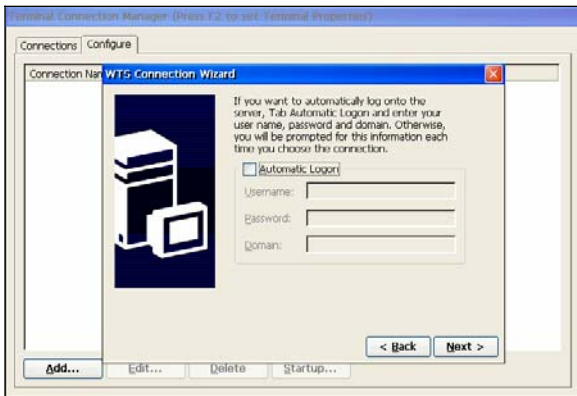
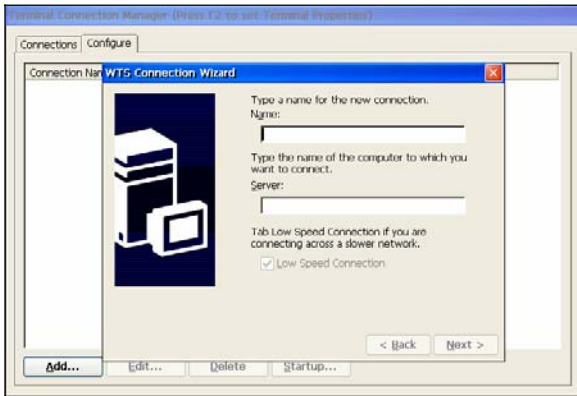
Click on the **Back** command button to go to the previous dialog box.

Click on the "X" icon on the top right of this dialog box to quit the setting at any time.

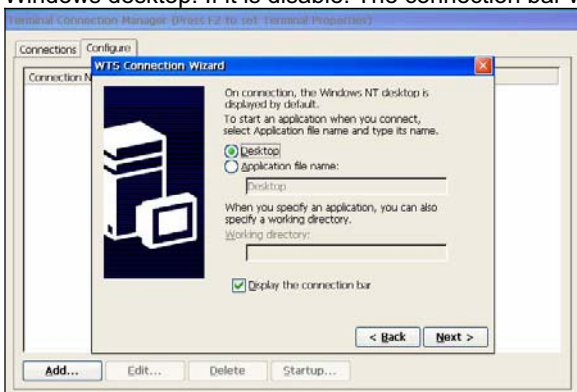
The following four figures show the sequence of the **Terminal Connection Wizard**.

Make selections and enter the **Name** for the new connection and type **IP Address** or **DNS Name** to connect to the server. If you are connecting across a slower network, you may click on Low Speed Connection.

### Terminal Connection Wizard



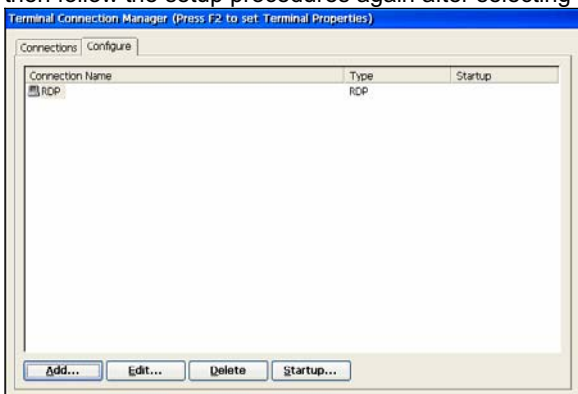
Click on **Desktop** if you want the Windows NT desktop displayed by default while connecting. Or click on **Application file name** and type its name when you want to start this application while connecting. You can also specify a working directory when you specify an application. If **default the connection bar** is enable. The connection bar will be showed on the Windows desktop. If it is disable. The connection bar will be hid.





After finish the setup then you can see the new connection name show in the dialog box.

And Click **Edit** if you want to edit the RDP. The screen will go back to Select the Connection Name as shown on **page 21**, then follow the setup procedures again after selecting the connection.

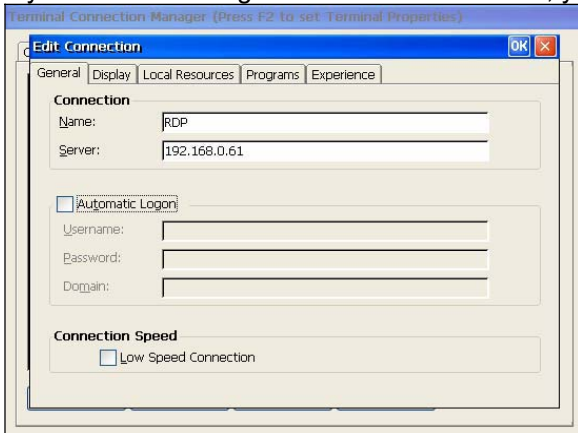


#### 4.4.1 General Tab

Change the **Name** and **IP Address** or **DNS Name** for the connection.

If you want to logon automatically, enable **Automatic Logon** and type the Username, Password and Domain.

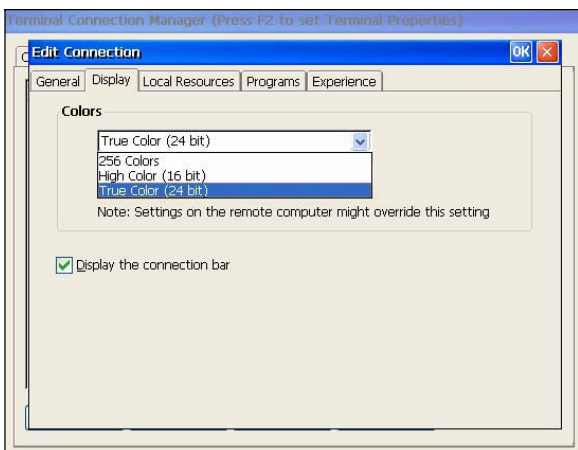
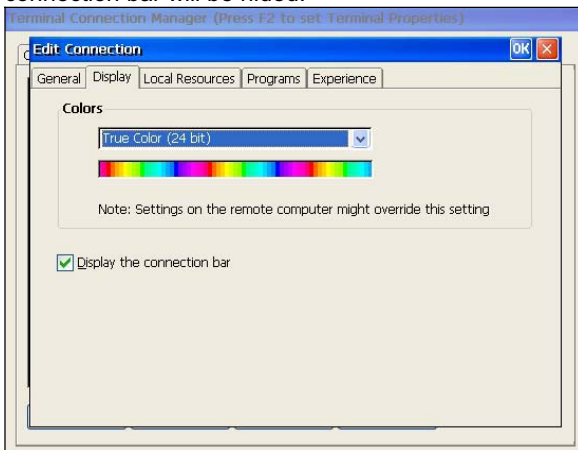
If you are connecting across a slower network, you may click on Low Speed Connection.



#### 4.4.2 Display Tab

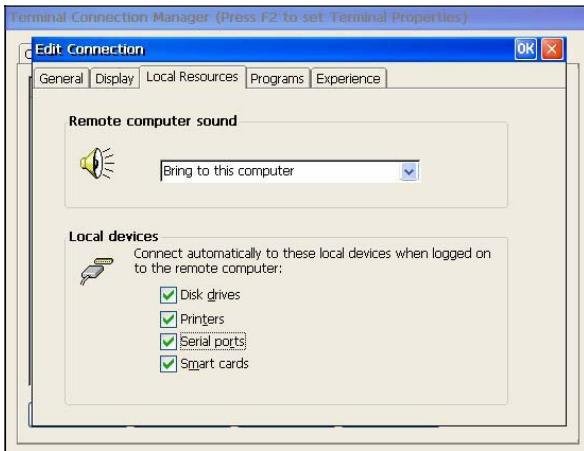
Change the Colors for RDP connection.

If **default the connection bar** is enable. The connection bar will be showed on the Windows desktop. If it is disable. The connection bar will be hidet.

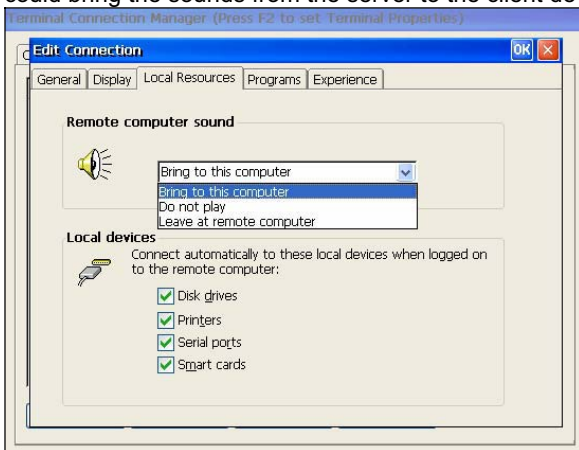


### 4.4.3 Local Resource Tab

Functions shown in local device.

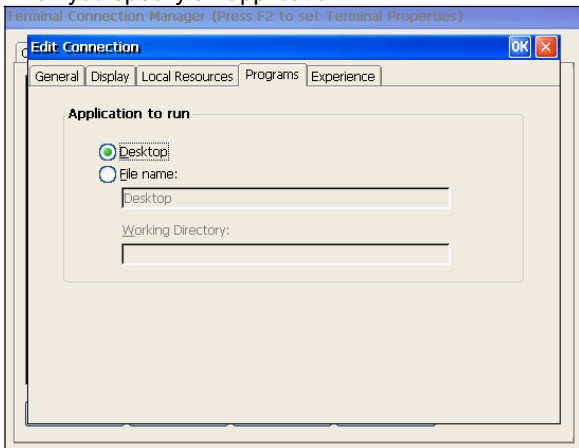


Choosing "Bring to this computer".. could bring the sounds from the server to the client device.



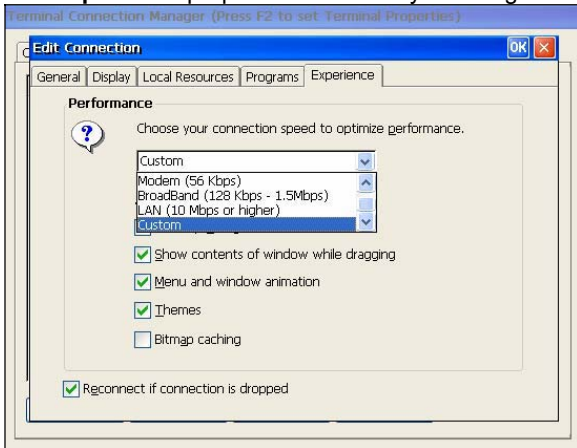
### 4.4.4 Programs Tab

Click on **Desktop** if you want the Windows NT desktop displayed by default while connecting. Or click on **Application file name** and type its name when you want to start this application while connecting. You can also specify a working directory when you specify an application.



### 4.4.5 Experience Tab

The **Experience** properties sheet lets you configure the connection speed.



## 4.5 ICA Connections

Use this application to create a Citrix ICA connection. Choose the Network Connection or Dial-In Connection for the remote application.

### 4.5.1 Creating a New ICA Connection Entry

You can configure and run two types of ICA sessions: Citrix server connections and published applications.

- ◆ *Citrix server connections* allow you to remotely control a session on a Citrix server from your WBT. Citrix server connections let you access the desktop of a specific Citrix server; you can run any applications available on the desktop, in any order.
- ◆ *Published applications* are specific applications set up by an administrator for remote users to run. When connected, you are presented with the application itself.

---

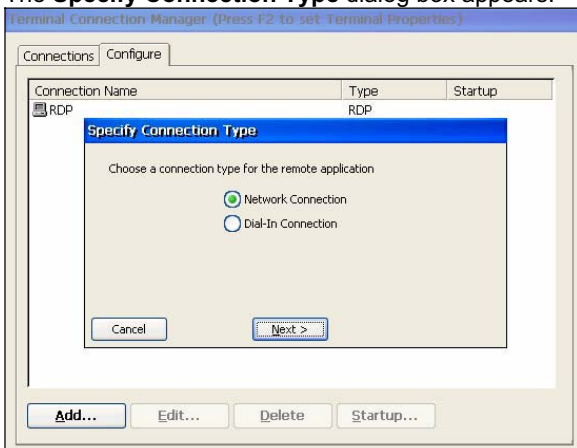
**Note** This procedure describes the simplest way to create a connection entry. When you follow these steps, you set the essential items you need to connect to a Citrix server from your WBT. See “Changing a Connection Entry” for more information about how to change the other properties for a connection entry.

---

#### 4.5.1.1 To create a new connection entry

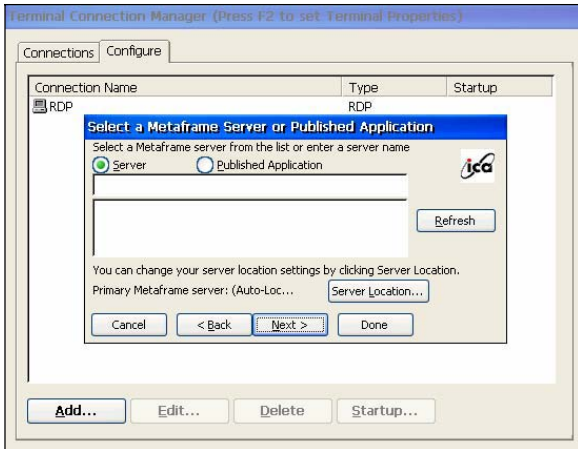
- a. In the **Connection Manager** dialog box, click the **Configure** tab.
- b. Click **Add**.
- c. In the **New Connection** dialog box, click the list box and select **Citrix ICA Client**. Click **OK**.

The **Specify Connection Type** dialog box appears:



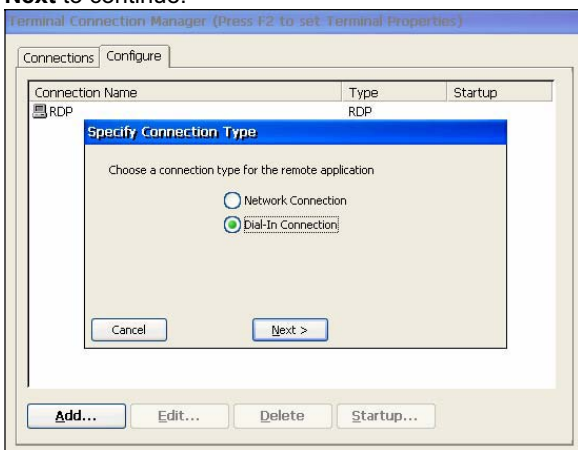


Click **Network Connection** to make a network connection. Make sure your WBT is connected to the network through the on-board RJ-45 connector or by a serial PPP connection to a Windows 95 or Windows NT RAS server. Click **Next** to continue. Skip to section 4.5.1.3.



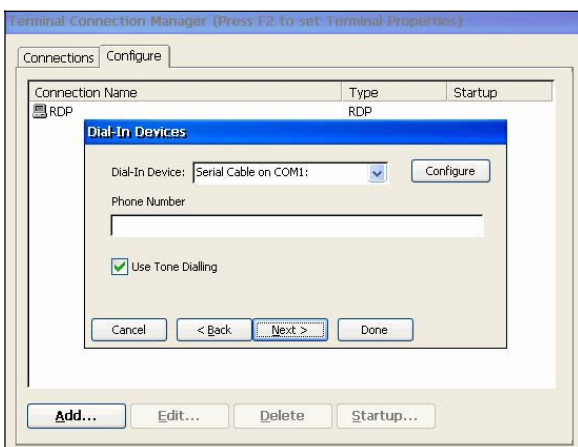
— Or —

Click **Dial-In Connection** to make a dial-in connection. Make sure your modem is installed and properly configured. Click **Next** to continue.



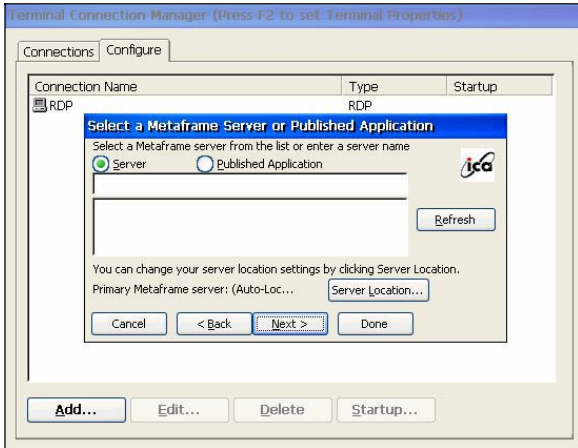
**Note** The ICA Windows-based Terminal does not support modem callback. When using modem callback, the server hangs up on dial-in connections at logon and then dials a specified number to reconnect to the user attempting to log on. Because Windows-based Terminal contains no mechanism to answer the return call, the ICA Windows-based Terminal does not support modem callback for dial-in connections.

4.5.1.2 The **Dial-In Devices** page appears:

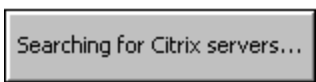


From the pull-down list, select your modem. In the **Phone Number** box, type the phone number, including area code, phone number, and country code of your Citrix server. Click **Next** to continue. Skip to section 4.5.1.6.

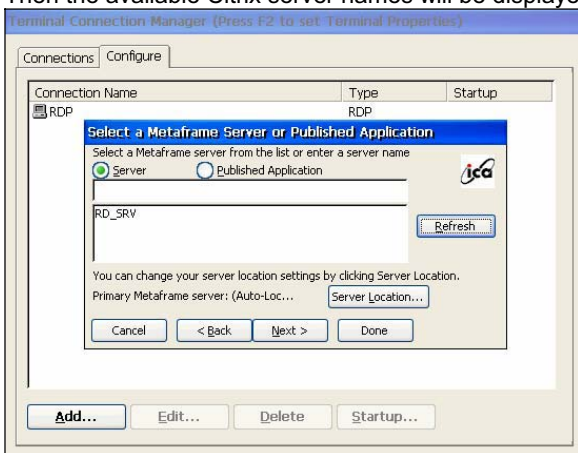
**4.5.1.3** The Select a Server or Published Application dialog appears:



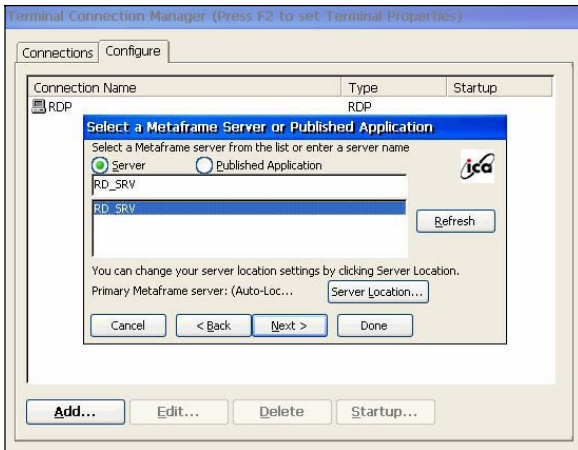
**4.5.1.4** Click **Server** to connect to a server or **Published Application** to connect to a published application. Click **Refresh** and then WBT will search for the available Citrix servers on the network. A message will display as below:



Then the available Citrix server names will be displayed:

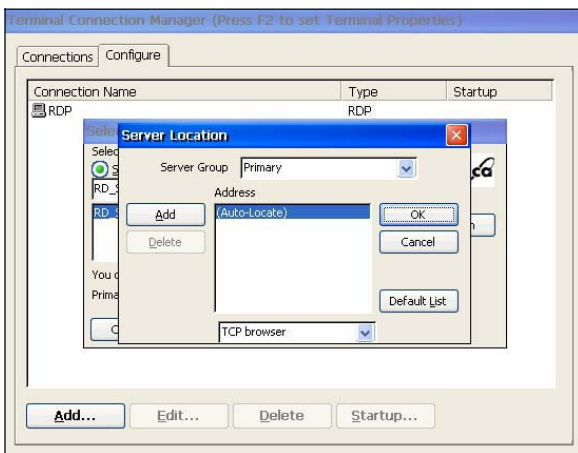


Select a Citrix server you would like to connect to:



If your WBT is not on the same network as the Citrix server you would like to connect to, the server name will not appear in the list (this would occur if you are on the other side of a router, across the Internet, or using RAS to connect to a remote network containing Citrix servers). In this case, click **Server Location** and go to section 4.5.1.5. Otherwise, scroll through the list and select the Citrix server or published application or type the name of the Citrix server or published application in the edit field. Click **Next** to continue, and go to section 4.5.1.6.

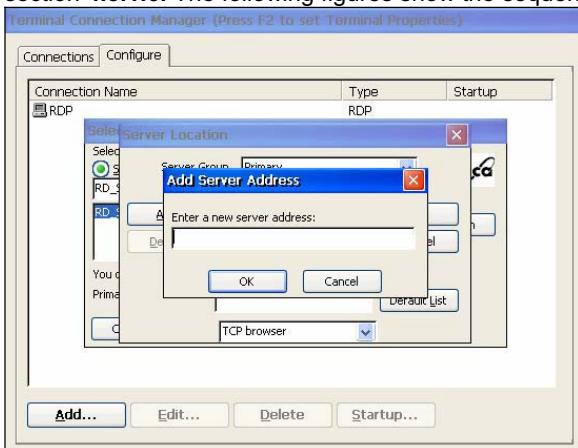
**4.5.1.5** The **Server Location** dialog box appears:



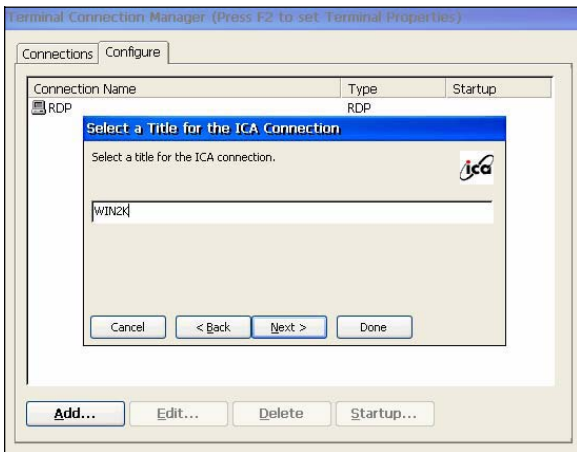
Remote Application Manager uses the information entered in the **Server Location** screen to help locate available Citrix servers and published applications.

The default server location protocol is **TCP Browser** and the default value entered in the **Address** field is **Auto-Locate**.

Click **Add** and enter the IP address or DNS name of any Citrix server on the remote network. Click **OK**, then click **Next** to section 4.5.1.6. The following figures show the sequence of settings.



**4.5.1.6** The **Select a Title for the ICA Connection** page appears:



Enter a name for the connection entry. The name you choose is the name of the entry in the **Current Client Connections** list and appears in the title bar of the ICA session window.

**4.5.1.7** Click **Done** to save the entry or **Cancel** to exit the new connection entry dialog box without saving the entry. You also can click on **Next** to continue configuring other detail settings, the details will be described in section from 4.5.3.2 to 4.5.3.6. Once you have created a connection entry, the name appears in the list of connections in **Connection Manager**.

**4.5.2 Connecting to a Citrix Server**

**4.5.2.1 To start a previously defined connection**

- b. In the **Connection Manager** dialog box, click the **Connections** tab.
- c. Select the desired connection name and click **Connect**.

If you specified a valid user name and password in the connection entry, you are logged in as that user.

If no user name and password are present in the entry or the information is incorrect, the server logon dialog box appears. Enter a valid user name and password for the Citrix server and click **OK** to log on.



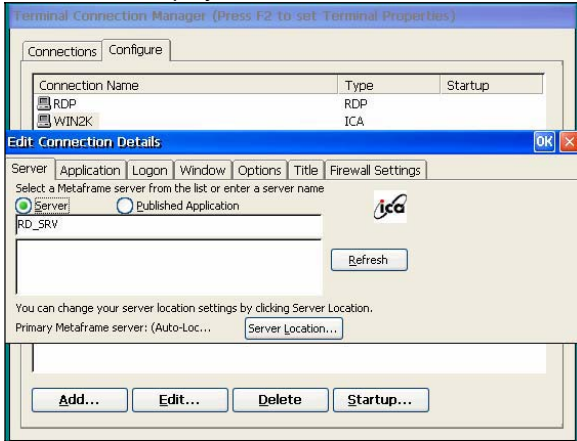
### 4.5.3 Changing a Connection Entry

This section describes how to change the properties of an existing connection entry.

#### 4.5.3.1 To change the properties of a connection entry

- d. In the **Connection Manager** dialog box, click the **Configure** tab.
- e. Click the name of the connection entry that you want to change.

Click **Edit** to display the **Edit Connection Details** dialog box.



- f. Make the desired changes.
- g. Click **OK** to save your changes.

The **Edit Connection Details** dialog box contains the following tabs:

- a. The **Server** tab (network connection entries only), where you can set the server or published application name to which to connect. There is also a button to display the **Server Location** dialog box where you can set Business Recovery options, please refer to section 4.5.1.5 for more information.
- b. The **Dial-in** tab (dial-in connection entries only), where you can set the area code, country code, and telephone number to dial. You can use the settings on this page in the same way as when you first set up the connection entry, see "Creating a New Connection Entry" for more information.
- c. The **Application** tab, where you can specify an application to run after connecting to a Citrix server, see section 4.5.3.2 "Specifying an Application to Run after Connecting to a Citrix Server" for more information.
- d. The **Logon** tab, where you can set the user name, password, and domain to log in to the Citrix server automatically, see section 4.5.3.3 "Specifying Logon Information" for more information.
- e. The **Window** tab, where you can set the number of colors used for the ICA Client window, see section 4.5.3.4 "Changing the Window Properties" for more information.
- f. The **Options** Tab, where you can control the connection between the Citrix server and your WBT and configure sound support, see section 4.5.3.5 "Setting Connection Entry Options" for more information.
- g. The **Title** tab, where you can change the name of the connection, the name appears in the list in the **Connection Manager** dialog box. See section 4.5.3.6 "

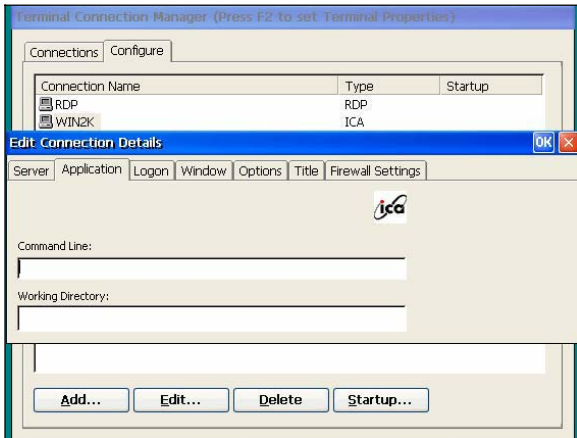
The **Firewall Settings** tab, where you can configure the client to use a SOCKS proxy and alternate address re-mapping, see section 4.5.3.7 "Configuring Firewall Settings" for more information.

#### 4.5.3.2 Specifying an Application to Run after Connecting to a Citrix Server

Use the **Application** tab to specify an application to run after connecting to a Citrix server. If you specify an application, you do not see the Windows desktop when you connect and the connection is closed when you exit the application.

**Note** This tab does not apply to connection entries for published applications. Any value entered is ignored.

- a. In the **Connection Manager** dialog box, click **Configure**.
- b. Select the connection entry that you want to change and click **Edit**.
- c. Click the **Application** tab.



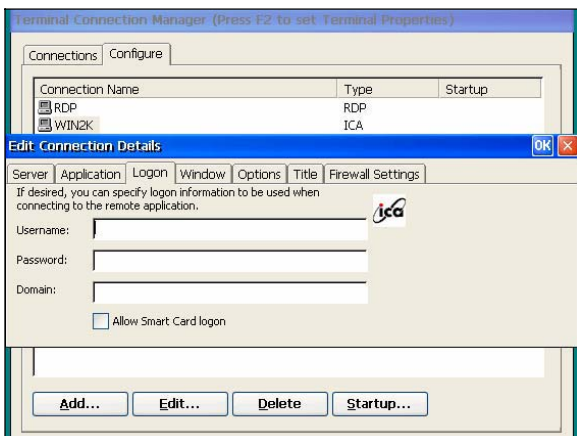
- d. In the **Command Line** box, specify the path and file name of the application to be run after connecting to the Citrix server. For example, to launch Notepad automatically after connecting to the Citrix server, type: C:\Wtsrv\Notepad.exe
- e. In the **Working Directory** box, specify the working directory to be used with the application. If you use Notepad to work on documents in the C:\My Documents directory, type **C:\My Documents**.
- f. Click **OK** to save your changes.

When you log on to the Citrix server, Notepad begins. In Notepad, if you select **Open** from the **File** menu, the C:\My Documents directory is displayed.

#### 4.5.3.3 Specifying Logon Information

You can include the settings needed to log on to the Citrix server as part of the connection entry. This saves time when connecting to the server but is less secure.

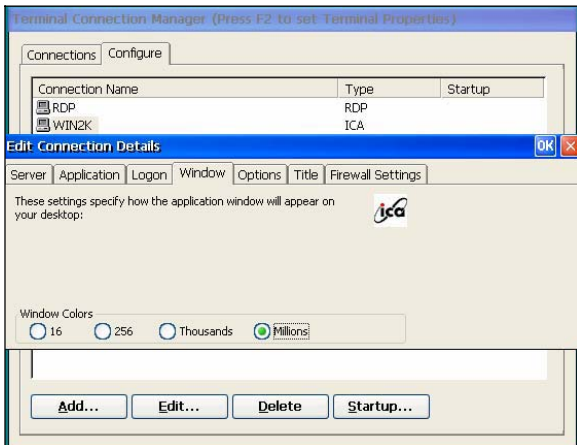
- a. In the **Connection Manager** dialog box, click **Configure**.
- b. Select the connection entry that you want to change and click **Edit**.
- c. Click the **Logon** tab.
- d. Type a valid user name, domain, and password. If you leave these boxes blank, you are prompted for your user name, domain, and password each time you connect to the Citrix server or published application.
- e. Click **OK** to save your changes.



#### 4.5.3.4 Changing the Window Properties

Use the **Window** tab to change the number of colors to use for ICA connections made using the connection entry.

- a. In the **Connection Manager** dialog box, click **Configure**.
- b. Select the connection entry that you want to change and click **Edit**.
- c. Click the **Window** tab.

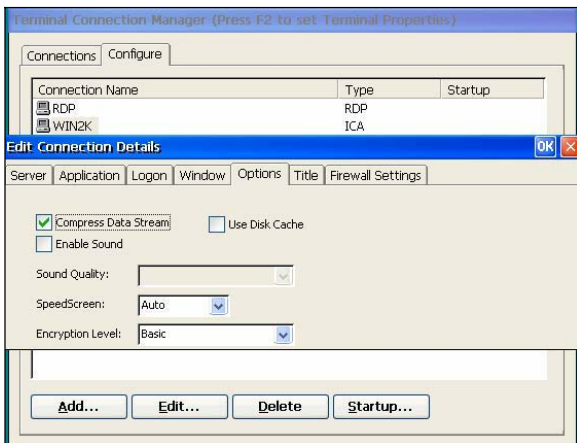


- d. In the **Window Colors** box, set the number of window colors to 16, 256, Thousands or Millions.
- e. Click **OK** to save your changes.

#### 4.5.3.5 Setting Connection Entry Options

Use the **Options** tab to set options specific to the connection entry, such as data compression and sound support.

- a. In the **Connection Manager** dialog box, click **Configure**.
- b. Select the connection entry that you want to change and click **Edit**.
- c. Click the **Options** tab.

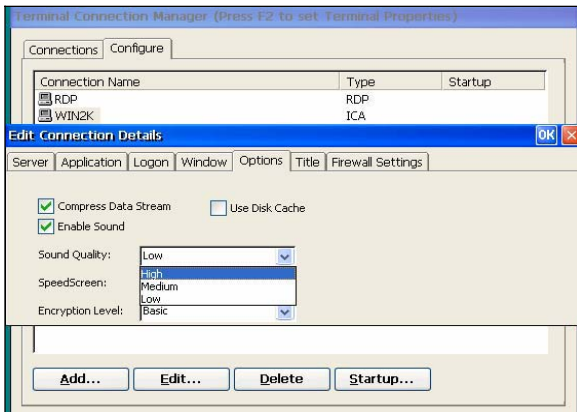


- d. Click **Compress Data Stream** to reduce the amount of data transferred between the ICA Client and the Citrix server. If your connection is bandwidth-limited, enabling compression can increase performance. If your client device is on a high-speed LAN, you may not need compression. If you have sufficient bandwidth, leave compression off to conserve processing power on the Citrix server.
- e. The **Cache** feature is not supported in this ICA client version.
- f. Click **Enable Sound** to enable sound support. From the pull-down list, select one of the following quality levels.
  - **High**. This value provides the greatest audio quality but should be used only when bandwidth consumption is not a concern.
  - **Medium**. Using this value results in less bandwidth consumption than when using **High**. Compression of sound data provides greater bandwidth efficiency but reduces sound quality somewhat. This value is recommended for most LAN-based connections.



- **Low.** This value offers the most efficient use of bandwidth but also decreases sound quality severely. This value is recommended for low-bandwidth connections, including most modem connections.

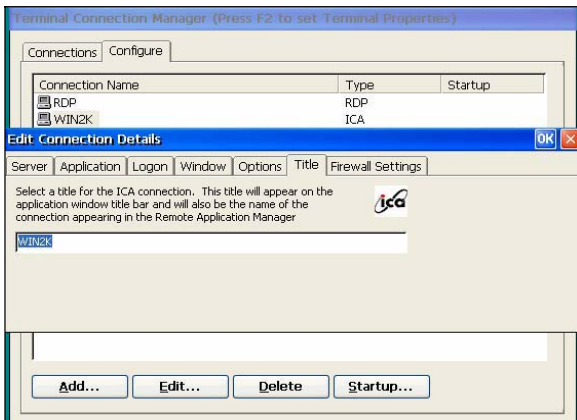
g. Click **OK** to save your changes.



#### 4.5.3.6 Changing the Title of the Connection Entry

By click on the Title tab you can change the title of this selected connection entry.

Click **OK** to save your changes.

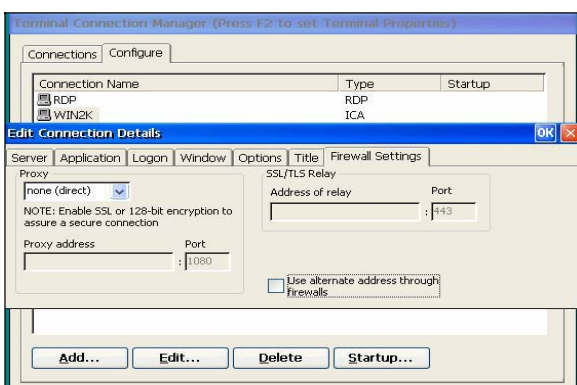


#### 4.5.3.7 Configuring Firewall Settings

If you are using a SOCKS proxy server to limit access to your Citrix servers, you must configure the ICA Client to connect to Citrix servers through a SOCKS proxy server. You can configure a default SOCKS proxy for all connections or use only a SOCKS proxy with a specific connection file. To do the former one please refer to the section

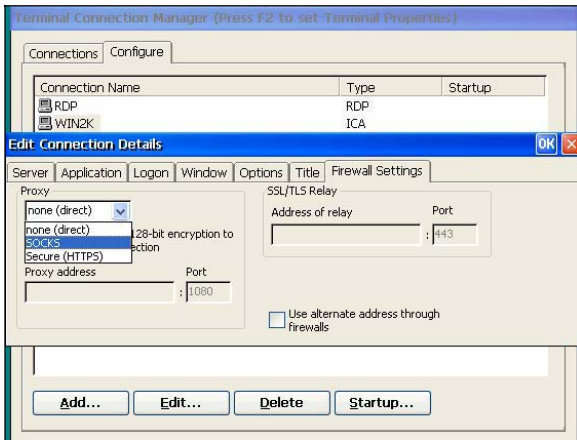
◆ **To configure a SOCKS proxy server for a specific connection entry**

- a. In the **Connection Manager** dialog box, click **Configure**.
- b. Select the connection entry that you want to change and click **Edit**.
- c. Click the **Firewall Settings** tab.





- d. Click **Connect via SOCKS proxy**.
- e. In the **Address of proxy to use** box, enter the SOCKS proxy server's IP address.
- f. In the **Port** box, enter the proxy server's port number (if different than 1080).
- g. Click **OK** to save your changes.



◆ **Configuring Alternate Address Translation**

If the ICA Client is outside a firewall that uses address re-mapping, you must configure the ICA Client to use the alternate address returned by the master ICA Browser. This is necessary even if you are not using a SOCKS proxy server.

---

**Note** You must also use the ALTADDR utility to manually set the alternate address for each Citrix server, See the Command Reference appendix of either the *MetaFrame Administrator's Guide* or the *WINFRAME System Guide* for more information.

---



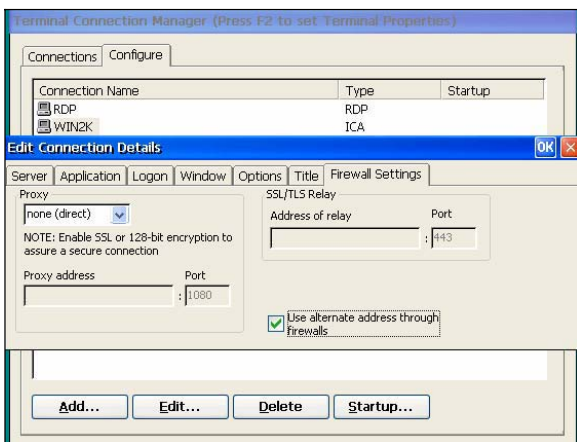
---

**Note** If you set alternate address translation for all connection entries, it cannot be disabled for specific connection entries.

---

◆ **To use alternate address translation for a specific connection entry**

- In the **Connection Manager** dialog box, click **Configure**.
- Select the connection entry that you want to change and click **Edit**.
- Click the **Firewall Settings** tab.



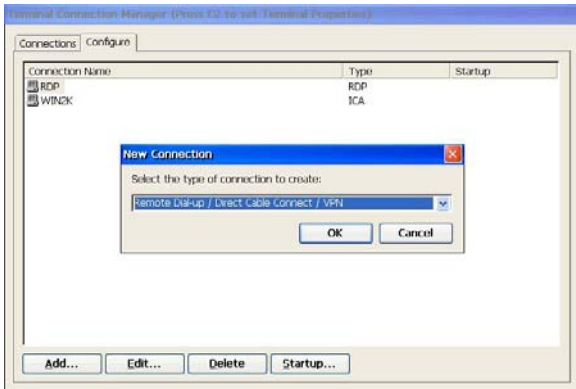
- Click **Use alternate address for firewall connection**.
- Click **OK** to save your changes.

## 4.6 Remote Dial-Up/ Direct Cable Connection/ VPN Operations

### 4.6.1 Remote Dial-Up Connection

#### 4.6.1.1 Make New Connection

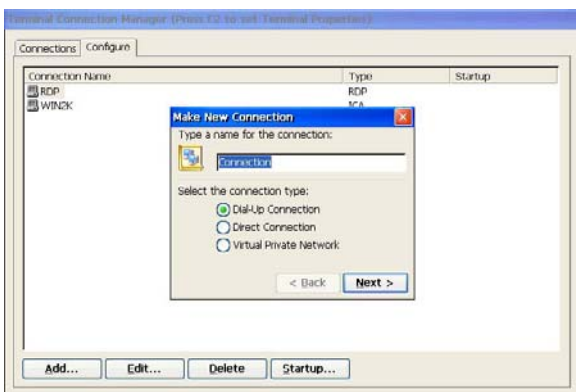
1. In the **Connection Manager** dialog box, click the **Configure** tab.
2. Click **Add**.
3. Scroll through the list and choose **Remote Dial-up/ Direct Cable Connect/ VPN**, click **OK** to make a new connection.



#### 4.6.1.2 Selecting the Connection Type

Choose the connection type by clicking on the radio button. It will decide which connection you want to connect with a server. Three options are available:

Choose **Dial-Up Connection** radio button if you desire to connect with the server through the modem; Or select **Direct Connection** radio button to connect with the server through serial port RS 232; Or select **Virtual Private Network** radio button to build a VPN connection. Here we choose "Dial-Up Connection", then click on **Next**.



#### 4.6.1.3 Make New Dial-Up Connection

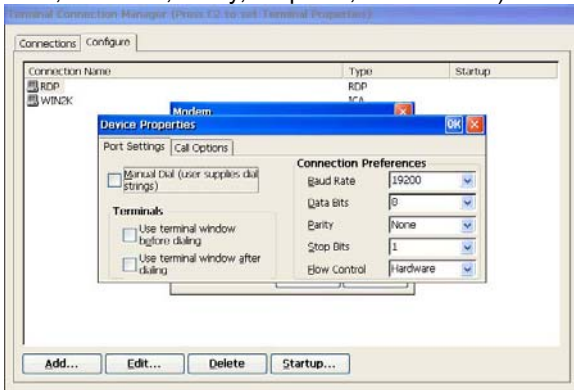
The **Make New Dial-Up Connection** dialog should now appear. Select the serial connection for the current COM port being used for the connection. Then click on **Configure...**



#### 4.6.1.4 Device Properties

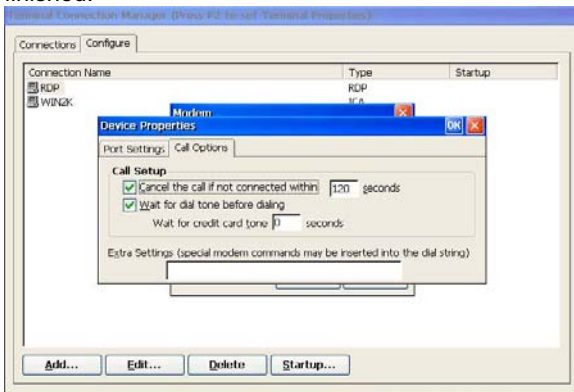
##### Port Setting

The Device Properties dialog should now display. Select the **Port Settings** tab and set the connection preferences (Baud Rate, Data Bits, Parity, Stop Bits, Flow Control) to match the host.



##### Call Options

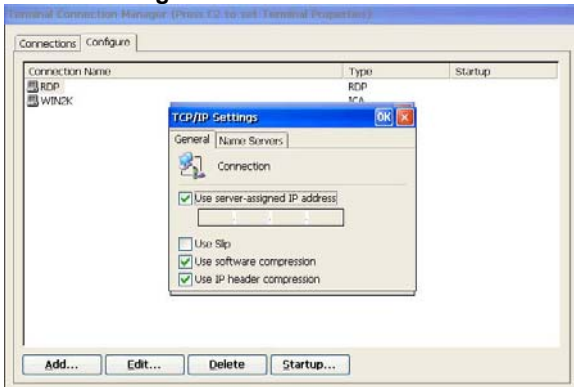
Select the Call Options tab. Select "Wait for dial tone before dialing" and deselect the rest of the options. Click "OK" when finished.



#### 4.6.1.5 TCP/IP Settings

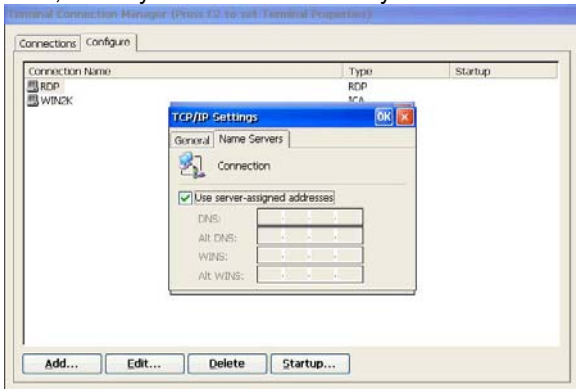
From the **Make New Dial-Up Connection** dialog click on the **TCP/IP Settings** button. In the TCP/IP Settings dialog select the **General** tab. Check the Use server assigned IP address, Use software compression and Use IP header compression.

##### TCP/IP Settings

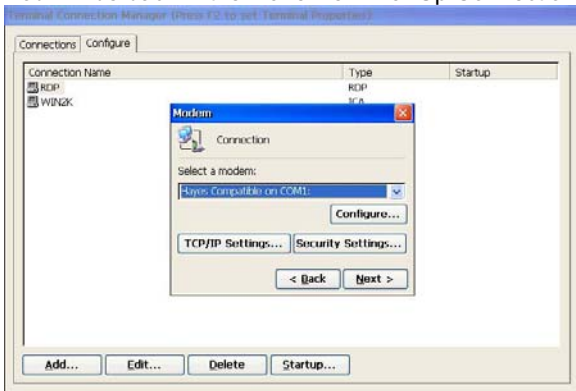


### Name Servers

Now select the Name Servers tab. Select Use server assigned addresses. When finished, click OK. Set Primary and Second DNS, Primary and Second WINS if you decline to use Server-assigned address.

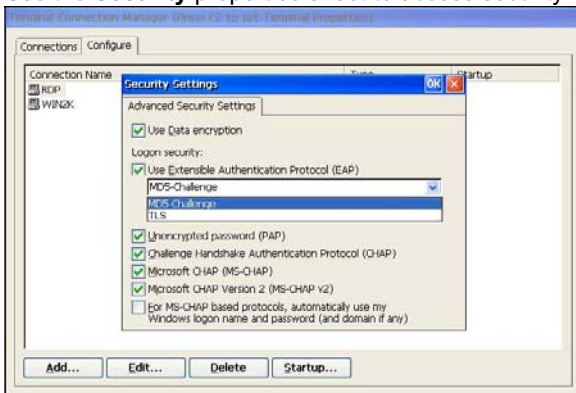


You will be back in the Make New Dial-Up Connection dialog when finish setup.



### 4.6.1.6 Security Setting

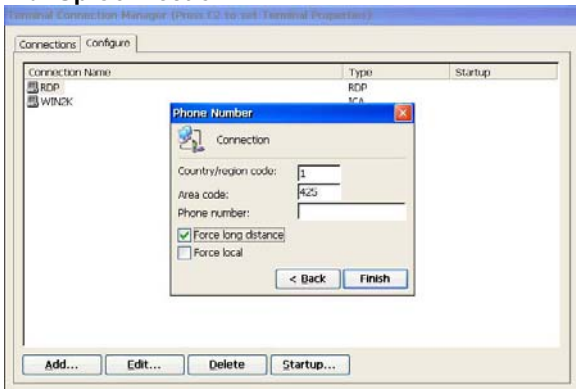
From the **Make New Dial-Up Connection** dialog click on the **Security Settings** button. Use the **Security** properties sheet to access security features if you want.



#### 4.6.1.7 Country, Area code and Telephone

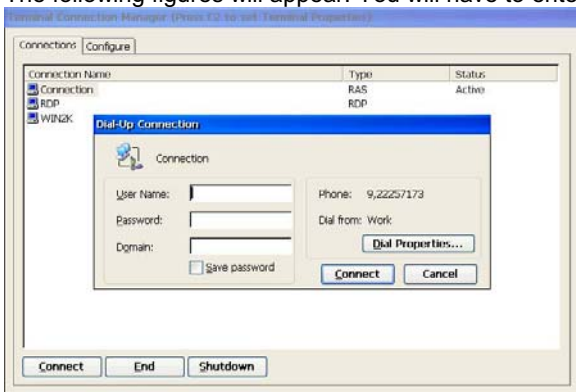
Below the Country, Area code and Telephone number must be entered correctly in the blank area for Dial-Up Connection. Click “Finish” to end this dialog.

#### Dial-Up Connection

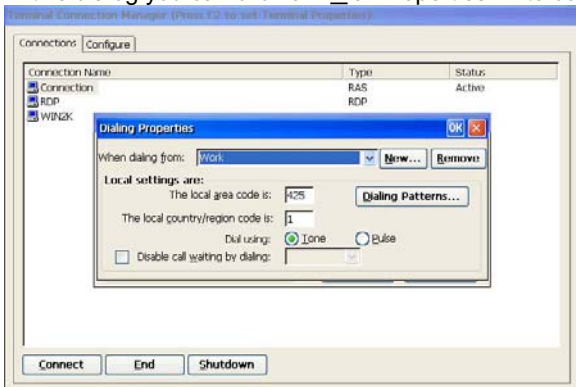


#### 4.6.1.8 To start PPP Dial-Up Connection

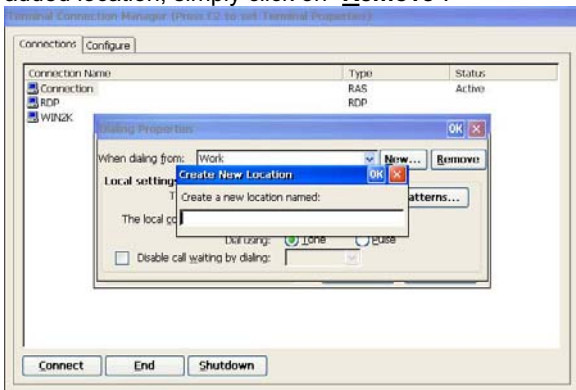
In Connection Manager dialog box click Connections tag and select the RAS connection you would like to connect to. The following figures will appear. You will have to enter the User Name, Password and Domain to log on the connection.



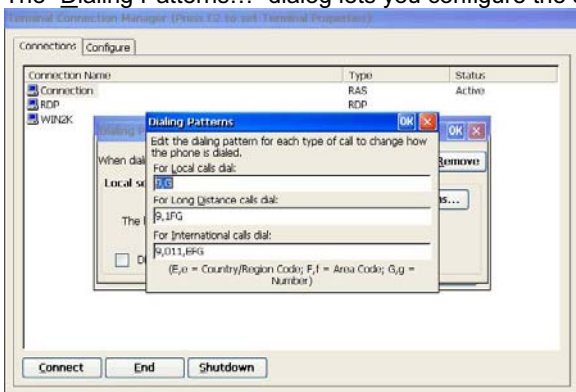
In this dialog you can click on “Dial Properties...” to configure the Dialing Properties shown as below:



You can click on “**N**ew...” to add a new location you would like to dial from. The figure shows as below. To delete the newly added location, simply click on “**R**emove”.



The “**D**ialing Patterns...” dialog lets you configure the settings shown as below.



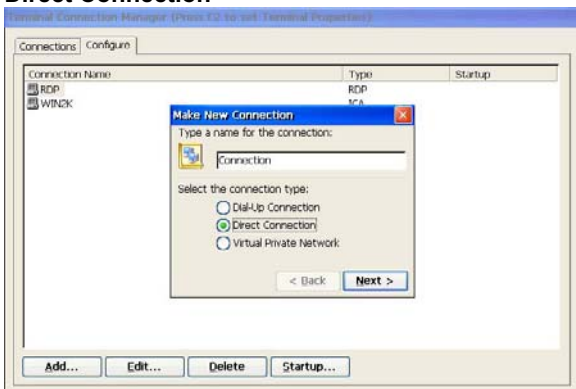
Once everything is correctly set up, click on Connect on Dial-up Connection dialog. The target and host should now be connected. You should see connection icons in the status bars of your host and target. Once the PPP Dial-Up is connected successfully, then press the Hot-keys “Ctrl +Alt + End “ to back to the “Terminal Connection Manager ”and double click on RDP or ICA for connection.

## 4.6.2 Direct Connection

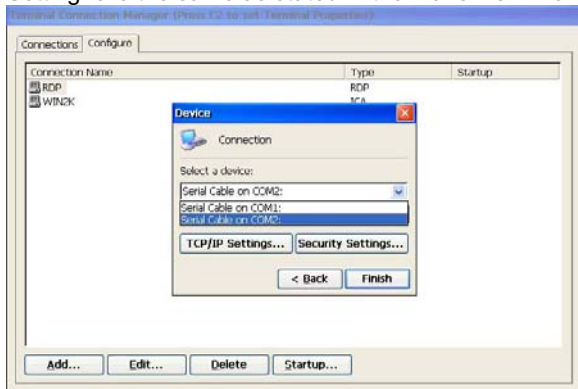
### 4.6.2.1 Make a New Direct Connection

In the Make New Connection dialog select Direct Connection radio button. Then click on “**N**ext”.

#### Direct Connection



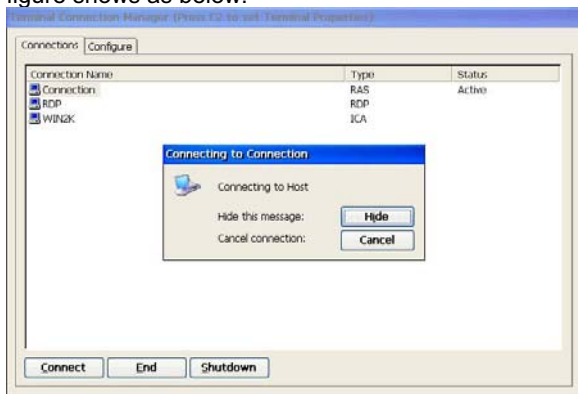
The Make New Direct Connection dialog should now appear. Select the serial connection for the current COM port being used for the connection. Then click on “Configure” and click on “TCP /IP Setting” .The setting of “Configure” and “TCP/IP Setting” are the same as stated in the Make New Dial-Up Connection above.



Click on “Finish” once the “Configure” , “TCP /IP Settings” and “Security Settings” have been completed. Then you will go back to the Configure entry of Terminal Connection Manager.

#### 4.6.2.2 To Start Direct Connection

In Connection Manager dialog box click Connections tag and select the RAS connection you would like to connect to. The figure shows as below.

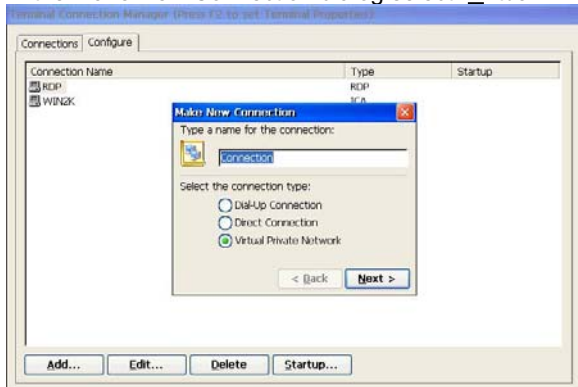


The target and host should now be connected. You should see connection icons in the status bars of your host and target. Once the Direct Connection is connected successfully, then press the Hot-keys “Ctrl +Alt + End “ to back to the “Terminal Connection Manager ”and double click on RDP or ICA for connection.

### 4.6.3 Virtual Private Network Connection

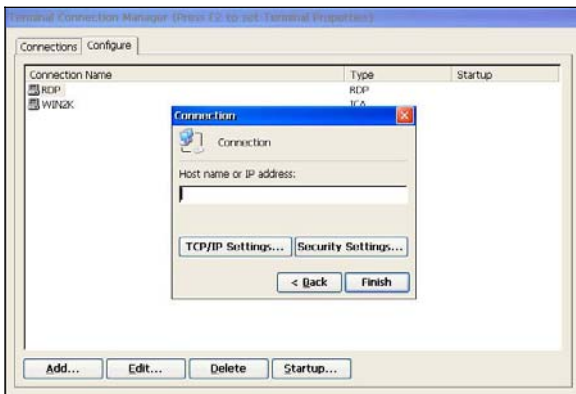
#### 4.6.3.1 Make a New Virtual Private Network Connection

In the Make New Connection dialog select “Virtual Private Network” radio button. Then click on “Next”.



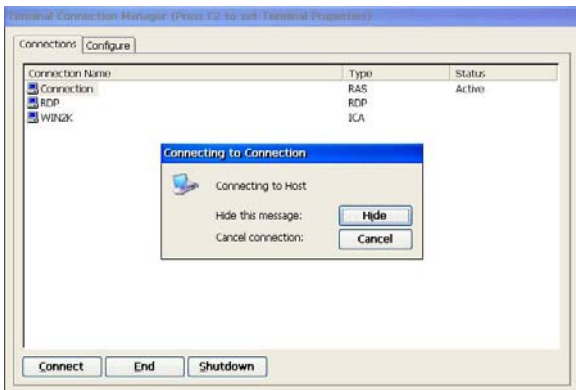


The Make New Virtual Private Network Connection dialog should now appear. Type in the Host name or IP address you wish to connect to. Then click on “TCP/IP Setting”. The TCP/IP Setting is the same as stated in the Make New Dial-Up Connection above. After all done, click on “Finish” to go back to the Configure entry of Terminal Connection Manager.



#### 4.6.3.2 To start Virtual Private Network Connection

In Connections entry of Terminal Connection Manager select the RAS connection you would like to connect to. The target and host should now be connected. You should see connection icons in the status bars of your host and target. Once the Virtual Private Network Connection is connected successfully, then press the Hot-keys “Ctrl +Alt + End “ to back to the “Terminal Connection Manager ”and double click on RDP or ICA for connection.



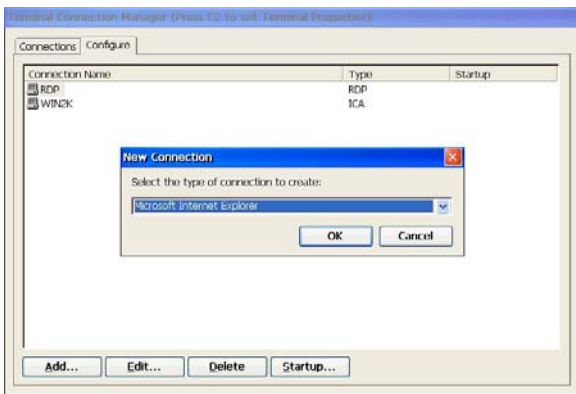
### 4.7 Microsoft Internet Explorer Connection

This is an optional function for your WBT; check your vender for this support before your purchase. This local browser connection will require more RAM utilization and powerful CPU to have better performance. This WBT is equipped with a CPU of outstanding speed to offer you a local browser session you never experience before.

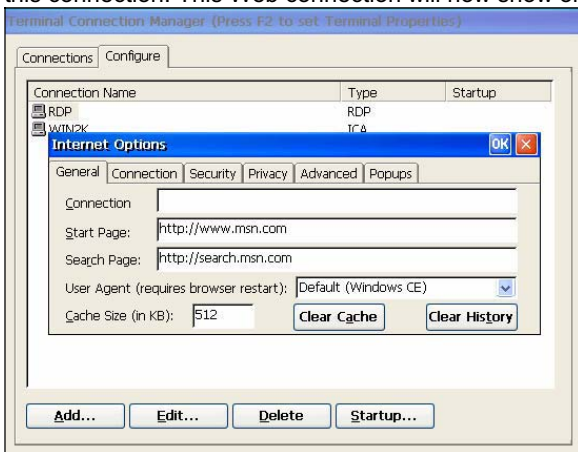
#### 4.7.1 To Make a New Microsoft Internet Explorer Connection

To make a new connection follow the below steps: In **Connection Manager** dialog box click on Configure tab, click on **Add** to add a new connection, scroll through the list in the box, choose **Microsoft Internet Explorer**. Then click on **OK** to continue.

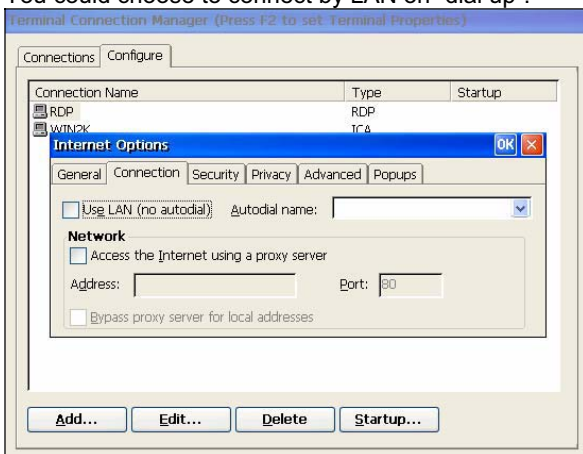




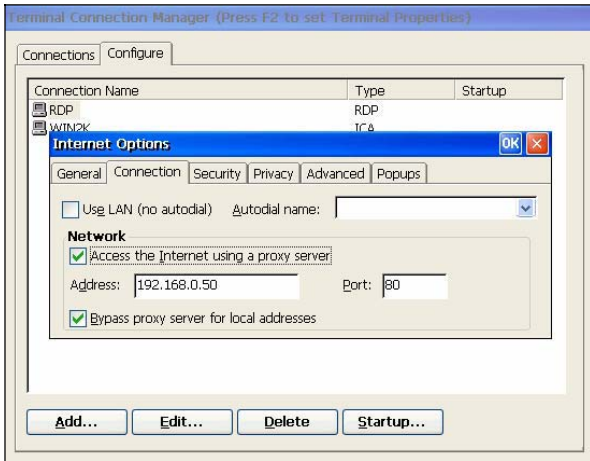
The following figure shall now appear. Type a name and your desired Start Page for this connection, click on **OK** to complete this connection. This Web connection will now show on the Connection Manager.



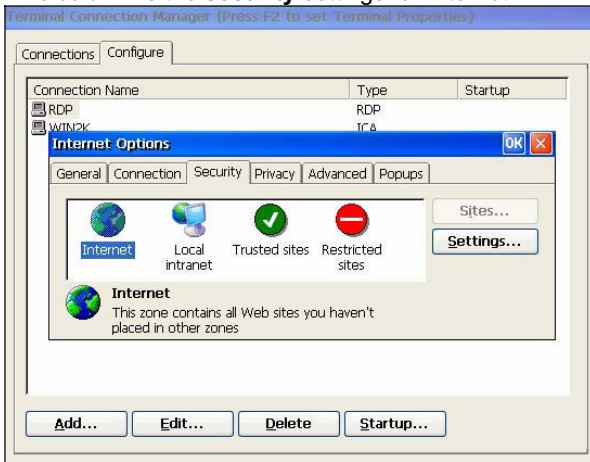
You could choose to connect by LAN on “dial up”.



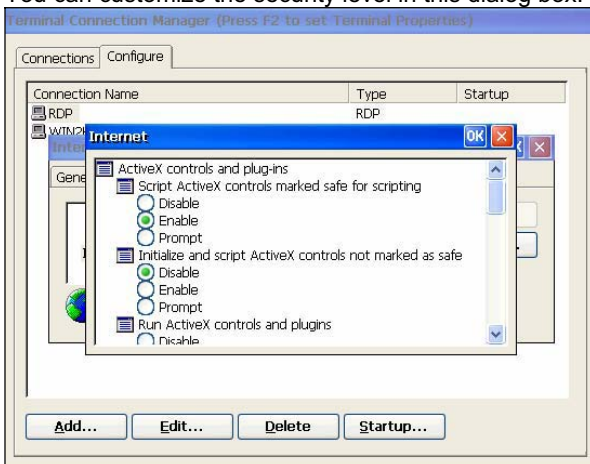
- a. If you have a proxy server, you could enable it when access to the Internet.
- b. Or you could by pass your proxy server when connecting to the local Internet.



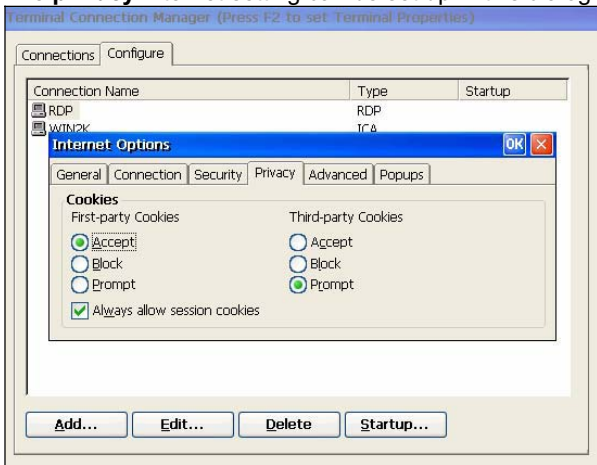
This column is the **security** settings for Internet.



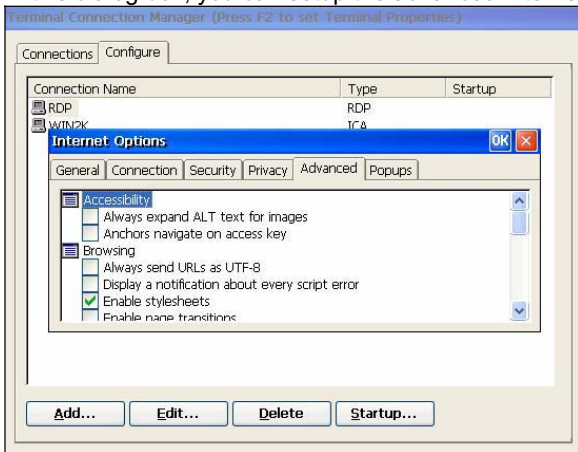
You can customize the security level in this dialog box.



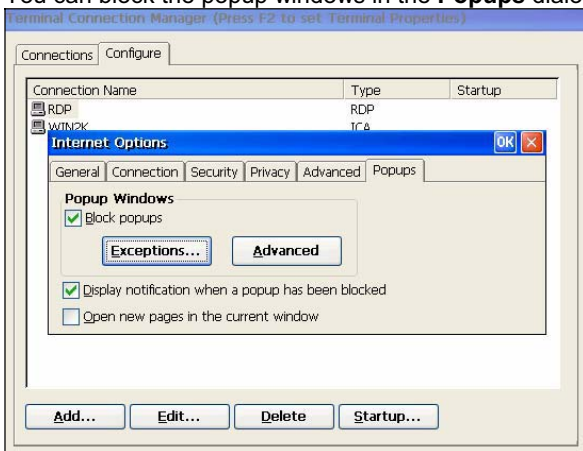
The **privacy** Internet setting can be set up in this dialog box.



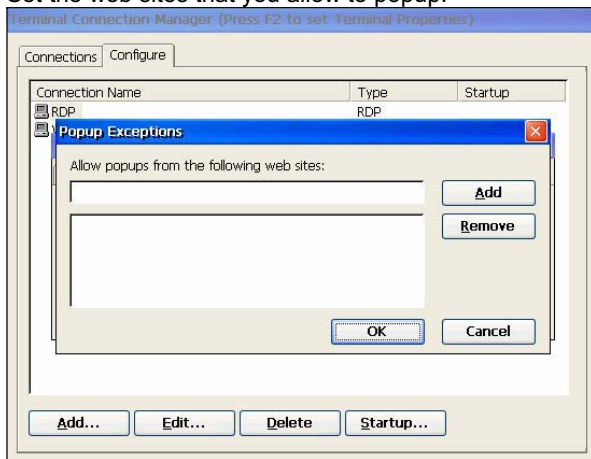
In this dialog box, you can setup the advanced Internet setting.



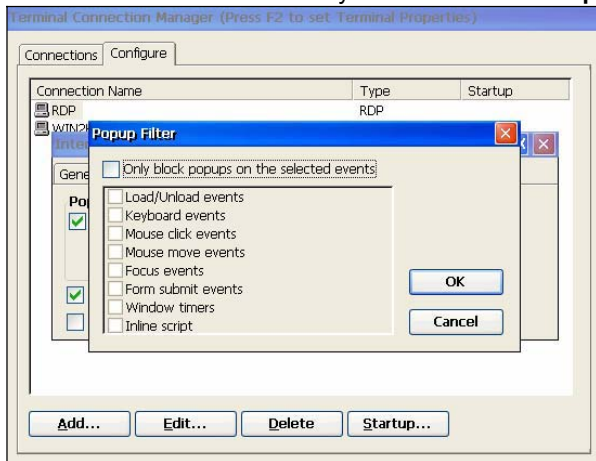
You can block the popup windows in the **Popups** dialog box.



Set the web sites that you allow to popup.

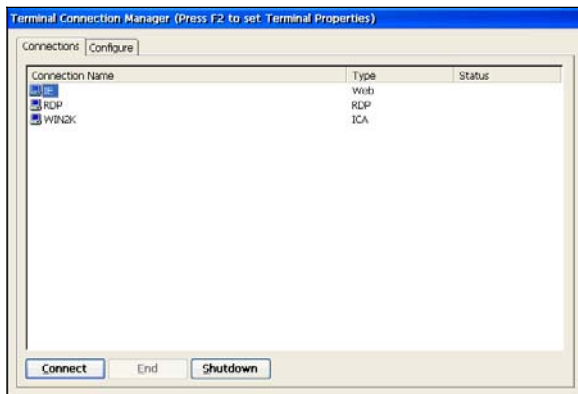


You can also select the events you want to block their popups.



#### 4.7.2 To Start a Microsoft Internet Explorer Connection

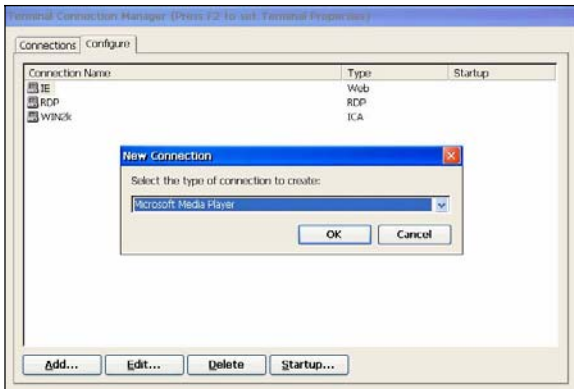
To start this connection simply press F2 to enter the Connection Manger, then click on Connections tab, double click this Web connection. If your network settings have been correctly set up then this is going to work.



## 4.8 Microsoft Media Player

### 4.8.1 To Make a New Microsoft Media Player Connection

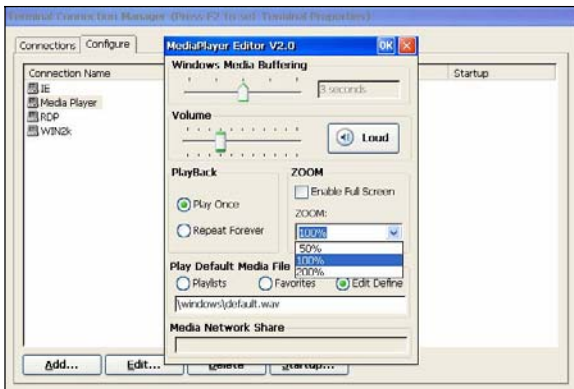
To make a new connection follow the below steps: In **Connection Manager** dialog box click on **Configure** tab, click on **Add** to add a new connection, scroll through the list in the box, **Microsoft Media Player**. Then click on **OK** to continue.



### 4.8.2 The MediaPlayer Editor V2.0

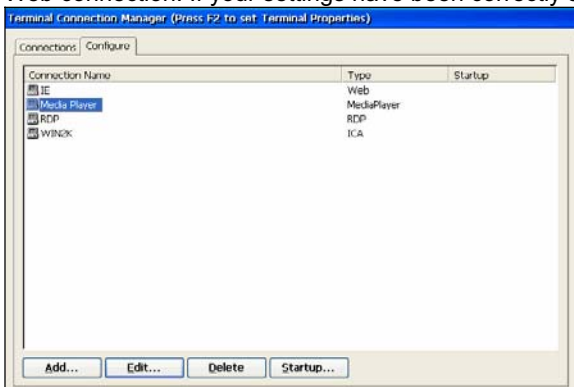
The Dialog of MediaPlayer Editor V2.0 will be showed. You can set the following options:

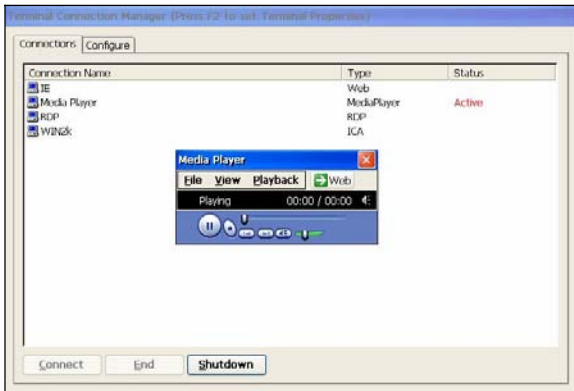
- (1) **Windows Media Buffering**: select the buffer **1seconds <-> 5 seconds**
- (2) **Volume**: You can set the volume when playing the media and select the sound is **mute** or **loud**.
- (3) **PlayBack** : Select **Play Once** when you want to play a time . Or select **Repeat Forever** when you want the media repeat to play.
- (4) **ZOOM**: If the **Enable Full Screen** is enable .You can see the media is played in full screen mode. You can also select the windows size when the media starts to play. And press **ALT + ENTER** or **ESC** to switch between full mode and general mode.
- (5) **Play Default Media Files**: You can set which file will be played .The **Playlists** means the recent media which be played. The **Favorites** displays the media files, which you add to my favorites in media player. And if you want to type a media file name and path by yourself. You can select **Edit Define**.



### 4.8.3 To Start a Microsoft Media Player Connection

To start this connection simply press F2 to enter the Connection Manger, then click on **Connections** tab, double click this **Web** connection. If your settings have been correctly set up then this is going to work.



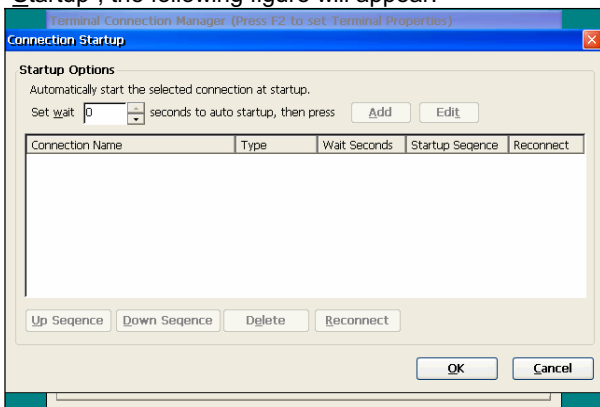


## 5 Advanced Function for Connections

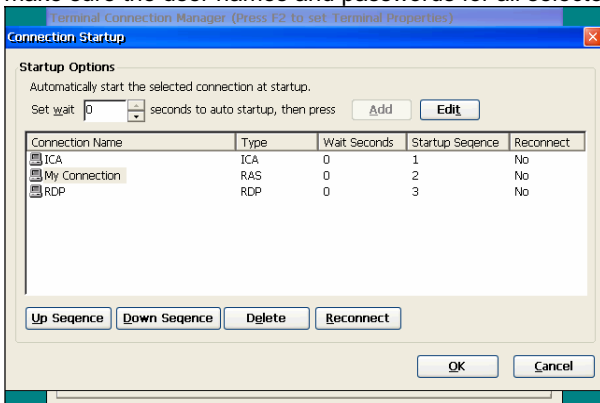
This WBT provides some advanced function for all connections such as Multiple Auto Start-Up and Multiple Auto Reconnect.

### 5.1 Multiple Auto Start-Up

In Configure tab of Terminal Properties dialog you can choose the connection entry you wish to configure, then click on "Startup", the following figure will appear:

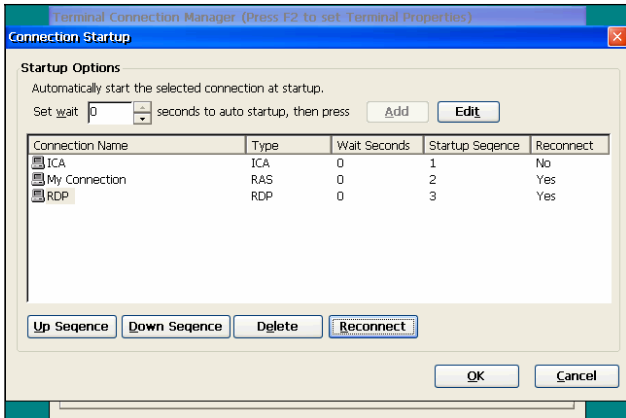


Click on "Add" to add this connection in the list of Startup list. You can repeat this action to have multiple Startups. Use "Up Sequence" and "Down Sequence" to set the priority of starting all the connections. Before this function works successfully, make sure the user names and passwords for all selected connections have been set up properly.



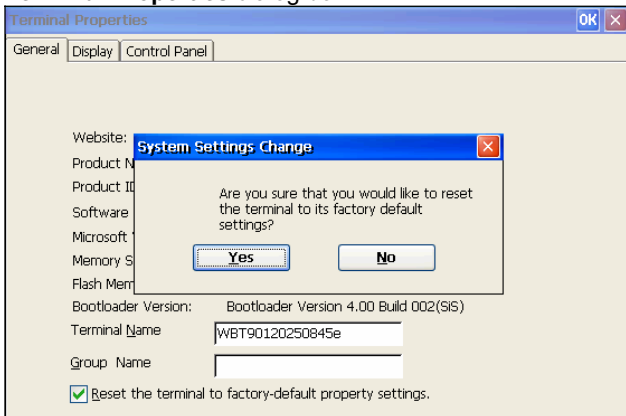
## 5.2 Multiple Auto Reconnect

In the same figure above you will also find an icon of “Reconnect”. This is to set this WBT to immediately and automatically reconnect the same session that you have just logged off. This special function can be widely optimized when the WBT is placed in a public area.



## 6 Terminal Properties

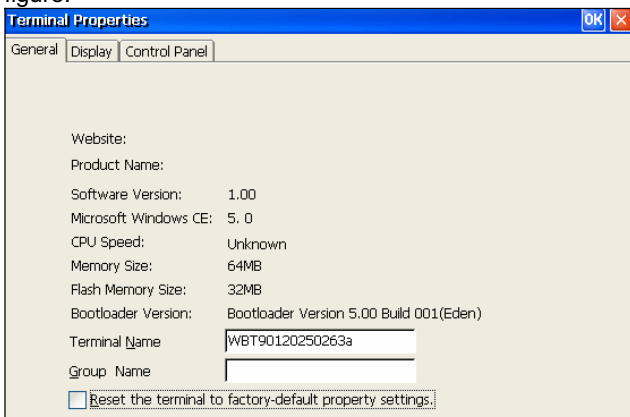
Terminal properties can be reset at any time during the normal terminal operation. In any connection you can just press the hot-keys “Ctrl+Alt+End” to return to **Terminal Connection Manager** dialog box. By pressing the [F2] key to invoke the **Terminal Properties** dialog box.



### 6.1 General Tab

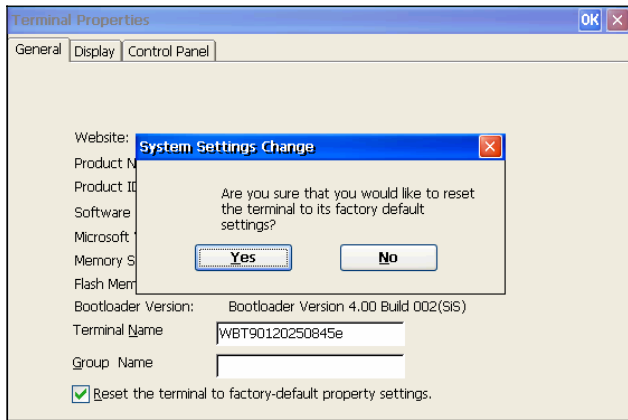
The following figure shows the dialog box.

In this dialog box it describes all the general information about this WBT. The information may vary from that shown in above figure.



### 6.1.1 Reset the terminal to factory default property settings

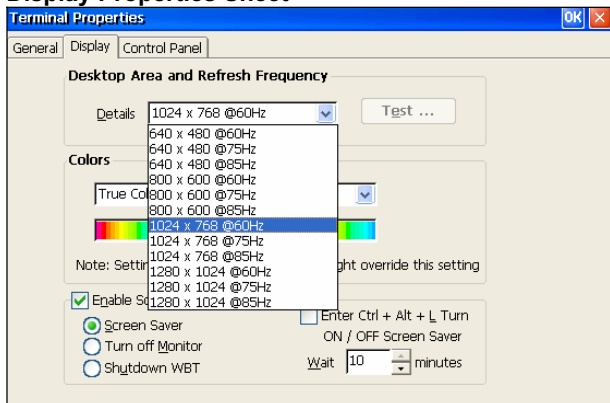
Tick the “Reset the terminal to factory default property settings” and click on “OK”, this WBT will ask for rebooting this system to take effect the setting change.



## 6.2 Display Configuration

The **Display** properties sheet lets you configure the terminal's display screen. Invoke this properties sheet by clicking on the **Display** tab in the **Terminal Properties** dialog box. The following figure shows the properties sheet. You can also **Test** your display after selecting one Refresh Frequency, the new testing mode will appear. The graphics adapter will be set to the new mode temporarily for about 5 seconds so you can determine whether your display works properly.

### Display Properties Sheet

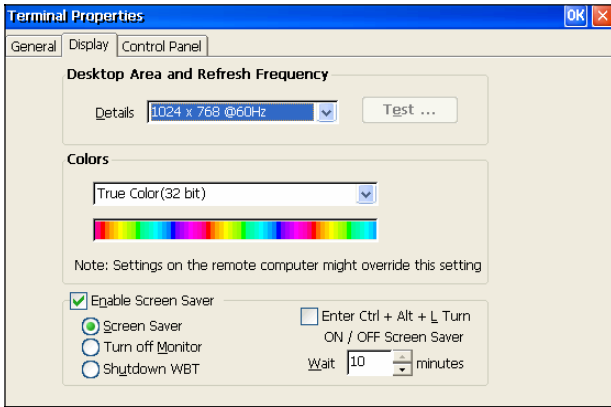


### 6.2.1 Enable Screen Saver

Tick the “Enable Screen Saver” and you can configure your desired way to enable the screen saver for this WBT. There are three options to choose: Screen Saver, Turn Off Monitor and Turn Off WBT. You can leave this WBT to activate the function automatically according to the time you set. Or you can tick “Enable Ctrl + Alt + L Turn ON/OFF screen saver” to manually activate/deactivate any one of the left three energy savers you tick by pressing the hot-keys of “Ctrl+Alt+L”.

There is still one hidden option of “Enable Property Password” to gain more security protection. To have this option available you have to click “Control Panel” tab and double click on Security tab. Please refer to the description mentioned earlier in section 6.5.11.





### 6.3 Control Panel Tab

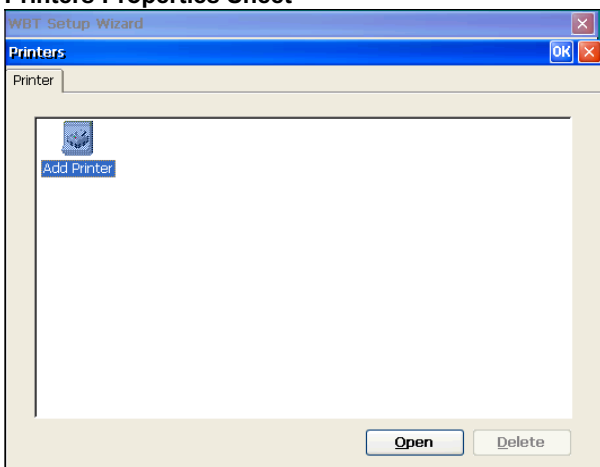
The **Control Panel** properties sheet lets you configure your terminal's function. In this dialog box it describes all the information of the terminal function about this WBT.



#### 6.3.1 Printers Properties

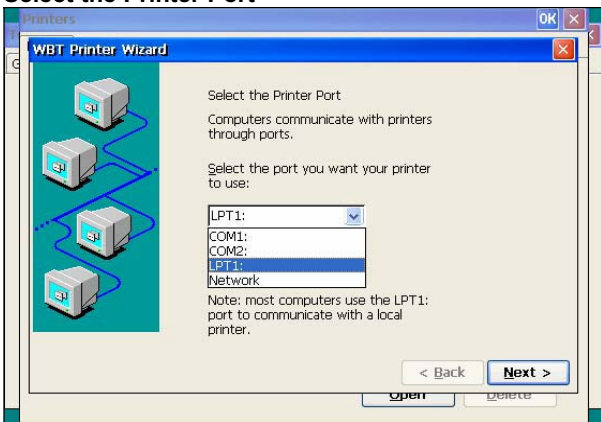
The **Printers** properties sheet lets you setup this terminal's **Local Print**.

##### Printers Properties Sheet

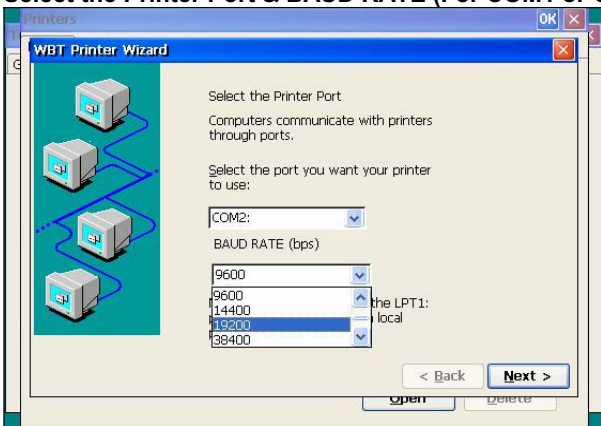


Select one of the ports, LPT1, COM1 or COM2 that you want to use to communicate with your local printer. Or you can select Network to set a network printer. When you select the COM1 or COM2 .You can also select the baud rate of COM1 or COM2 port.

**Select the Printer Port**

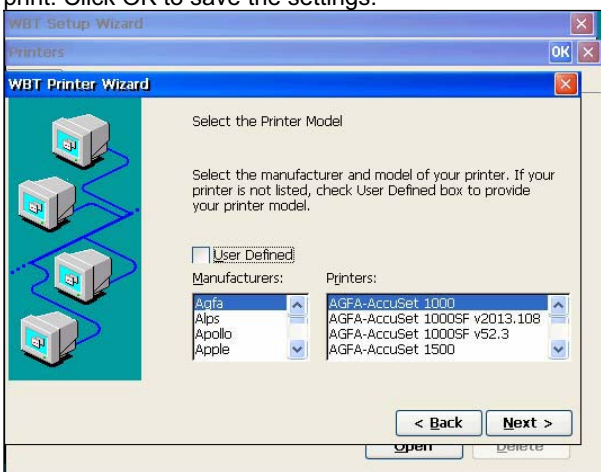


**Select the Printer Port & BAUD RATE (For COM1 or COM2)**



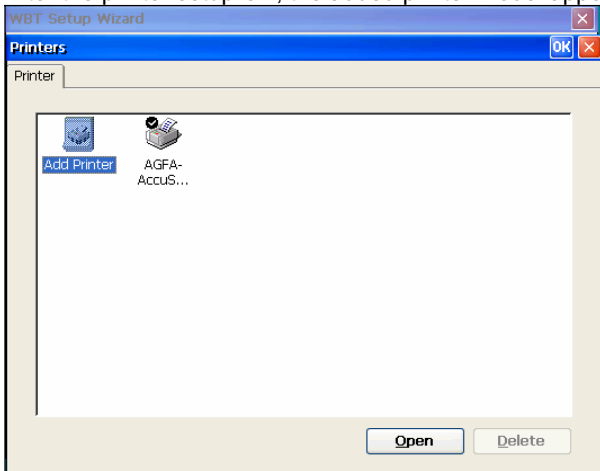
**6.3.1.1 Select the Printer Model**

Select the manufacturer and model of your printer. If your printer name is not listed, check with your printer document and select one that is closer. If you want this local printer as your terminal's default print, then check the box Make this the default print. Click OK to save the settings.



The detail has been described in section 3.2.4 to 3.2.6.2.

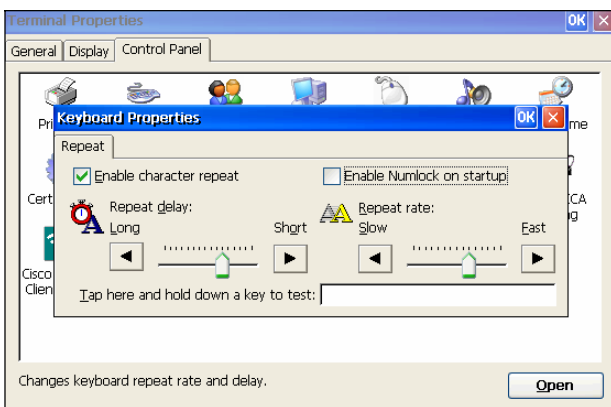
After the printer setup OK, the added printer model appears in the list of the printer.



### 6.3.2 Keyboard Input

The **Keyboard** properties sheet lets you configure your terminal's keyboard. Invoke this properties sheet by clicking on the **Keyboard** icon. The following figure shows the properties sheet.

#### Keyboard Properties Sheet

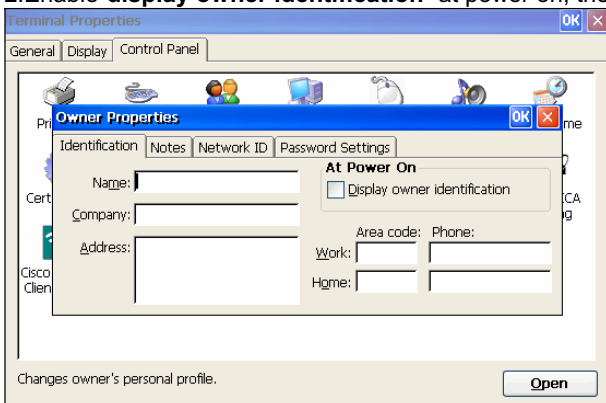


### 6.3.3 Owner Properties

#### 6.3.3.1 Identification

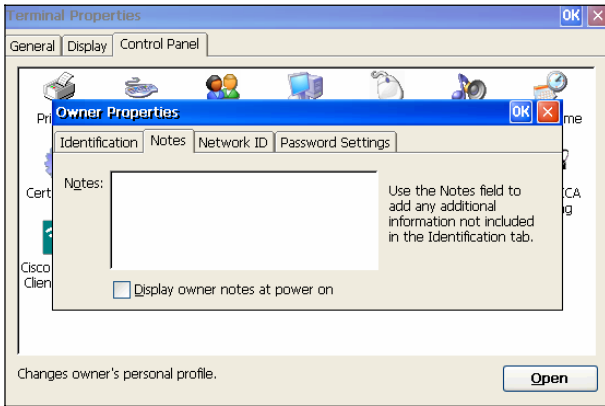
1.To protect users rights, User could key in their identification data before entering connection manager.

2.Enable "display owner identification" at power on, the information will show whenever the machine is on.



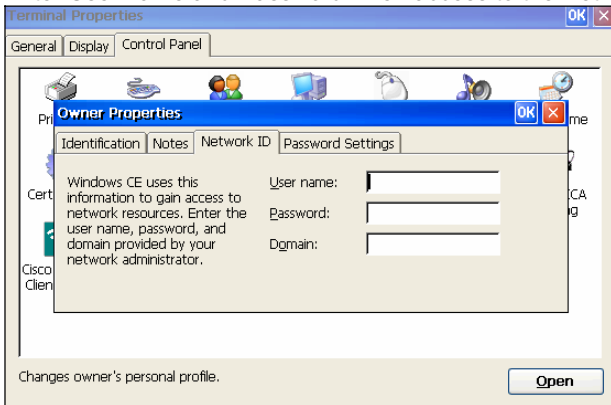
### 6.3.3.2 Notes

User could key in any sentences or words in the column. It will show up if you enable "Display owner notes at power on".



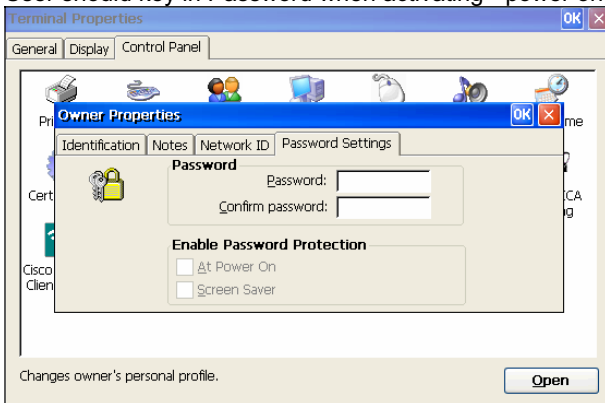
### 6.3.3.3 Network ID

Enter User name and Password when access to the Network.



### 6.3.3.4 Password Setting

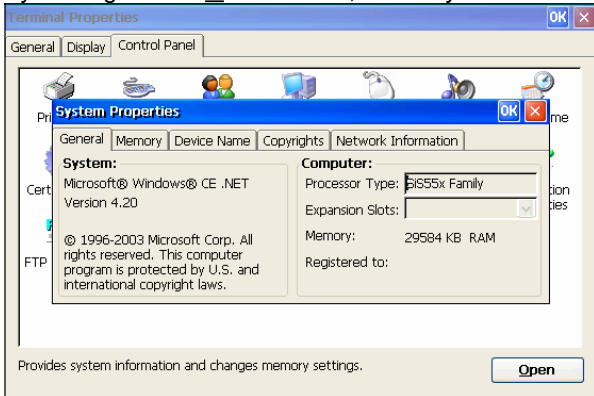
User should key in Password when activating "power on" and "screen saver" functions.



## 6.3.4 System Properties

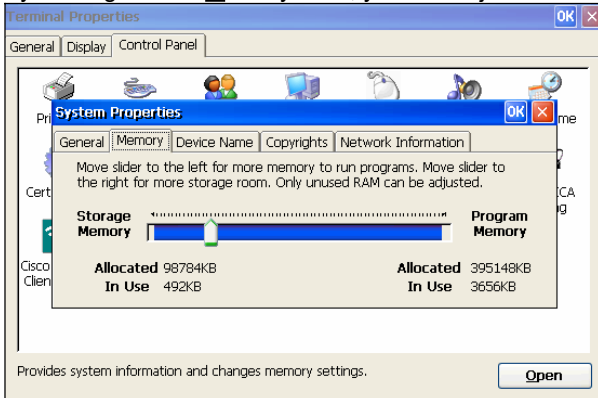
### 6.3.4.1 General

By clicking on the “General” icon, all the system information will be displayed.



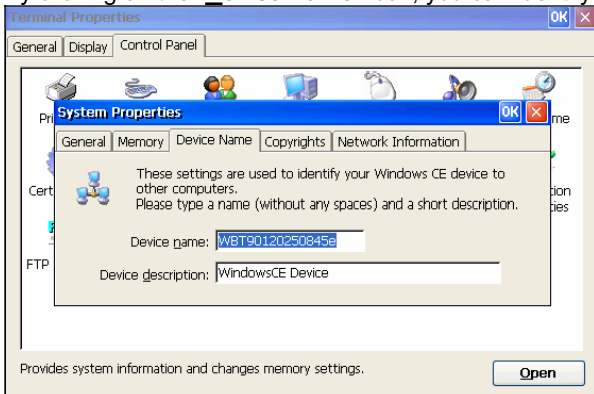
### 6.3.4.2 Memory

By clicking on the “Memory” icon, you can adjust the memory, as you want to run the programs.



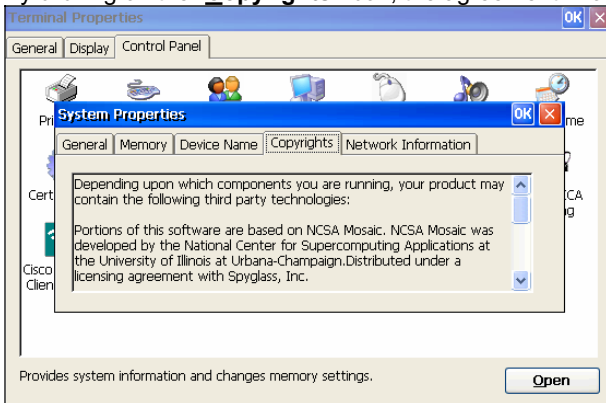
### 6.3.4.3 Device Sheet

By clicking on the “Device Name” icon, you can identify your Windows CE device to other computers.



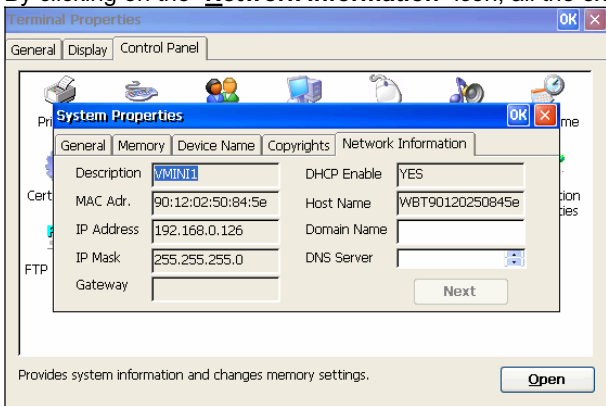
### 6.3.4.4 Copyrights Sheet

By clicking on the **“Copyrights”** icon, the agreement information will be displayed.



### 6.3.4.5 Network Information

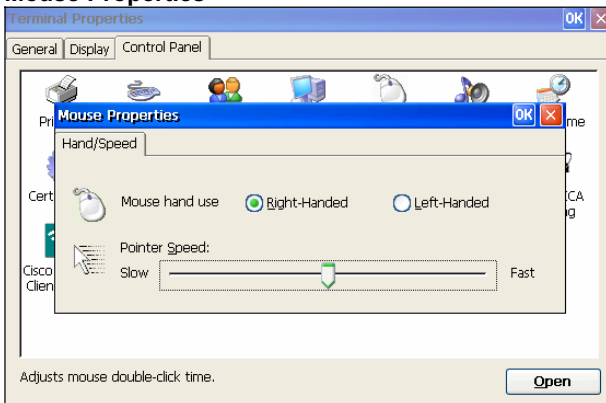
By clicking on the **“Network Information”** icon, all the existing network information will be displayed.



### 6.3.5 Mouse Properties

Click **Mouse Properties** if you want to configure your mouse setting to Right-Handed or Left-Handed, and the Pointer Speed.

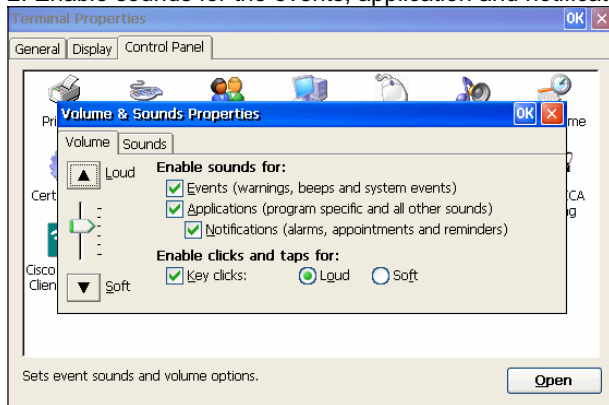
#### Mouse Properties



## 6.3.6 Volume & Sound Properties

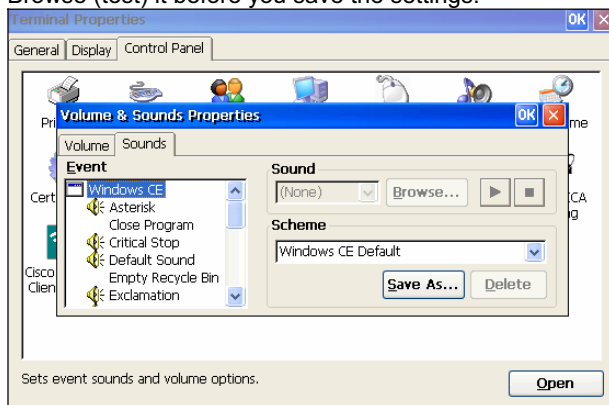
### 6.3.6.1 Volume

1. Adjust the Volume of the sounds of the client machine.
2. Enable sounds for the events, application and notifications.

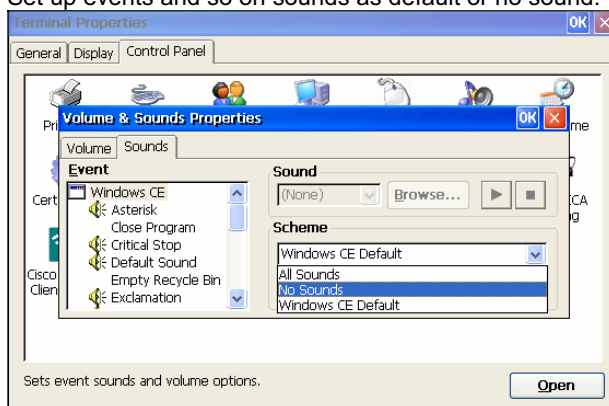


### 6.3.6.2 Sound

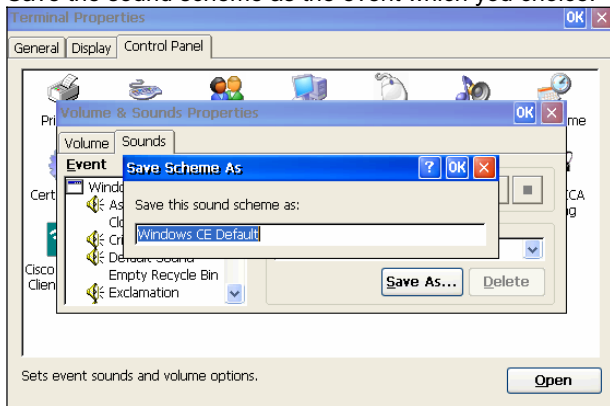
The sounds of events, application and notifications could be set up as default sound or there are several choices. Browse (test) it before you save the settings.



Set up events and so on sounds as default or no sound.

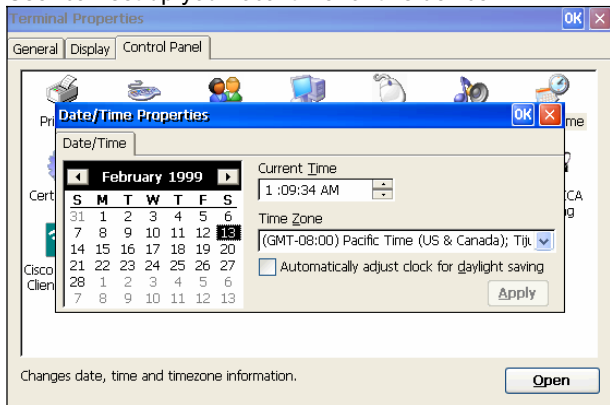


Save the sound scheme as the event which you choice.



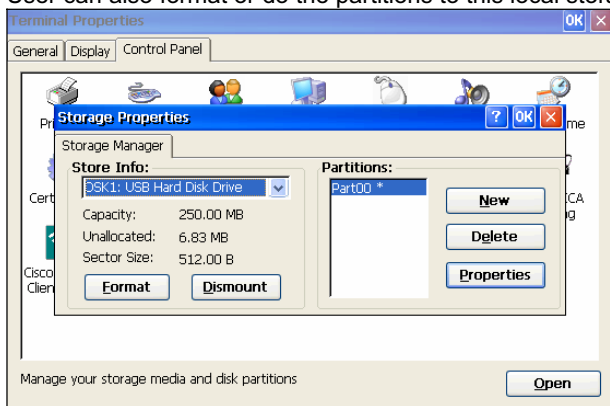
### 6.3.7 Date/Time Properties

User can set up your local time for this device.



### 6.3.8 Storage Manager Properties

If the machine is connected with any floppy or Hard drivers, it will show the storage information. User can also format or do the partitions to this local storage device.

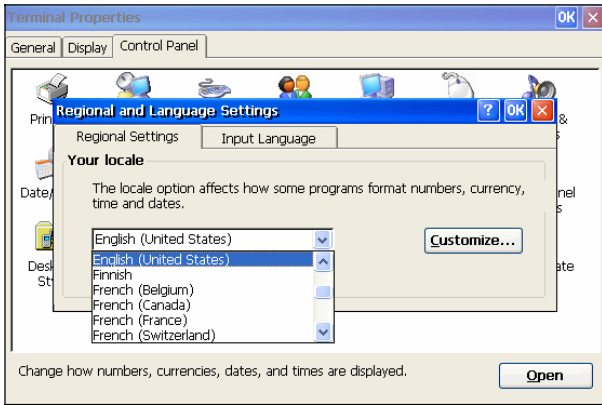


### 6.3.9 Regional and Language Setting

#### 6.3.9.1 Regional setting

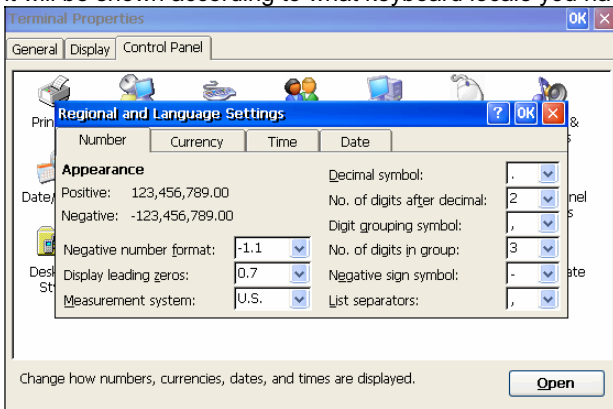
Set up the keyboard locale for the local device.





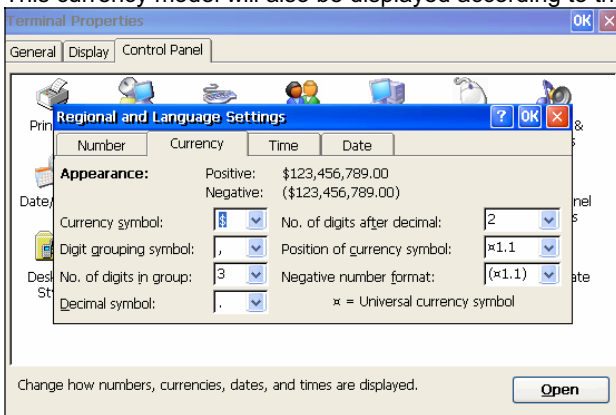
### 6.3.9.2 Number

Press the **Customize the Number**; **Currency**, **Time** and **Date** pages will appear. There are different types to display the numbers in the settings, however, it will be shown according to what keyboard locale you have set up.



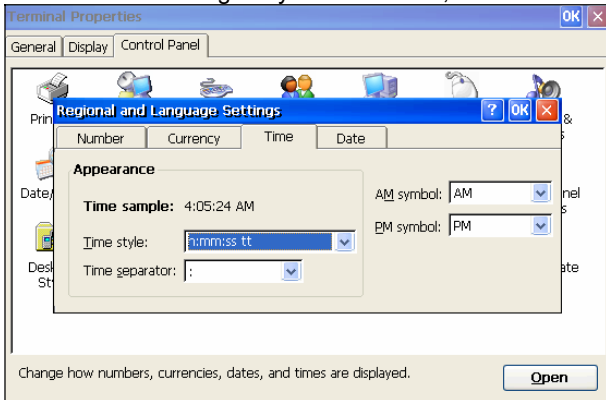
### 6.3.9.3 Currency

This currency model will also be displayed according to the locale you have set up.



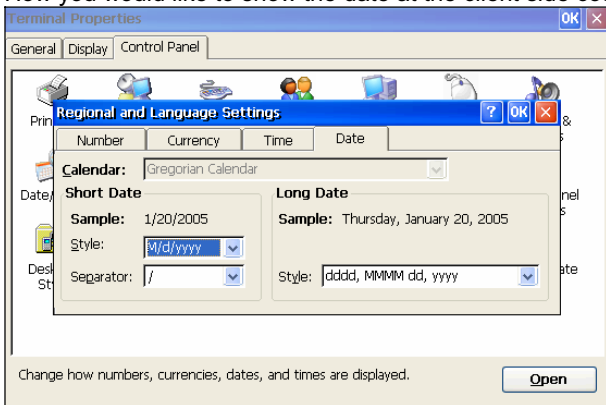
### 6.3.9.4 Time

Time could be arranged by turns of hours, minutes and seconds.



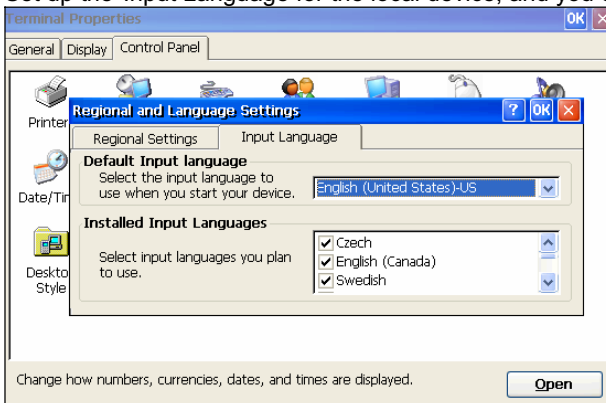
### 6.3.9.5 Date

How you would like to show the date at the client side could be arranged here.



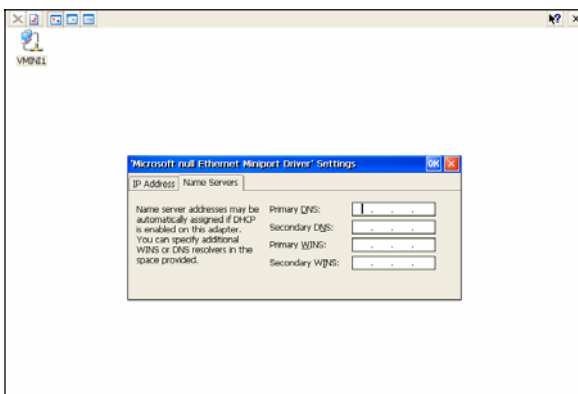
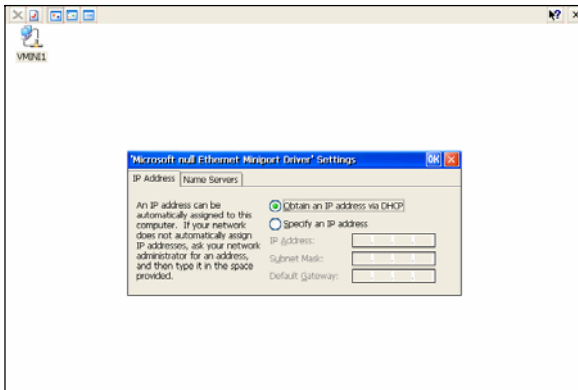
### 6.3.9.6 Input Language

Set up the Input Language for the local device, and you can also select the input language you plan to use.



### 6.3.10 Network Status Properties

The **Network** properties sheet lets you set up a method for SNMP upgrades. Invoke this properties sheet by clicking on the **Network** tab in the **Terminal Properties** dialog box. The following figure shows the **Network** properties sheet. If you have a DHCP server, then click on Obtain an IP address from a DHCP server to automatically get an IP address. Or you may specify an IP address by yourself. You can also type a **Name** for the **Terminal**. Refer to page 11 Network Configure. The Terminal Group box is for the centralized remote management software to control WBTs by group name when doing grouping.



### 6.3.11 Security Properties

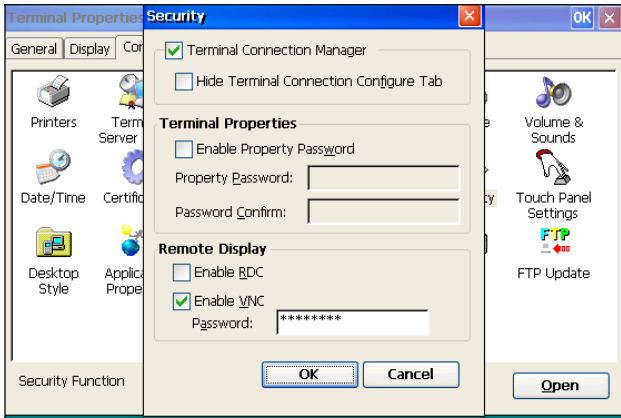
Use the **Security** properties sheet to access security features if you want. Click to enable terminal security, and deactivate the **Terminal Connection Manager** function and the **Hide Terminal Connection Configure Tab** function. By default the Terminal Connection Manager function is enabled but the Hide Terminal Connection Configure Tab function is disabled.

Enable "**Enable Property Password**" then type the new password that you wish to change on the "**New Password**" column, and then re-type it again on the "**Confirm Password**" column. Both password column must be identical.

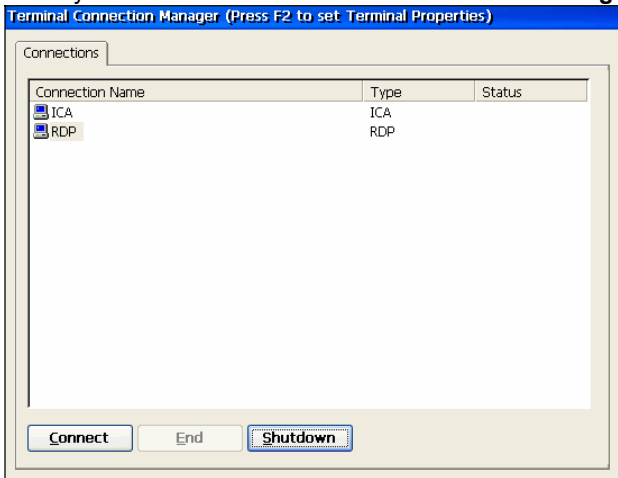
Click OK then the WBT will ask for rebooting to save the setting change. After rebooting, before entering the Connection Manager dialog box, this WBT will ask for user name and password that you just typed in. Then go back to this General tab of Terminal Properties dialog, now the "Enable Property Password" option shall show up. Tick it up, then whenever the energy saver is activated and you want to deactivate it to enter the system, this password protection function will show up.

Enable "**Enable RDC**", the WBT could be in the control of RM tool.

Enable "**Enable VNC**", the WBT could be in the control of VNC viewer, and the default password is "**password**".



When you enable the **Hide Terminal Connection configure Tab** function .Your Connection configure Tab will be hidid.

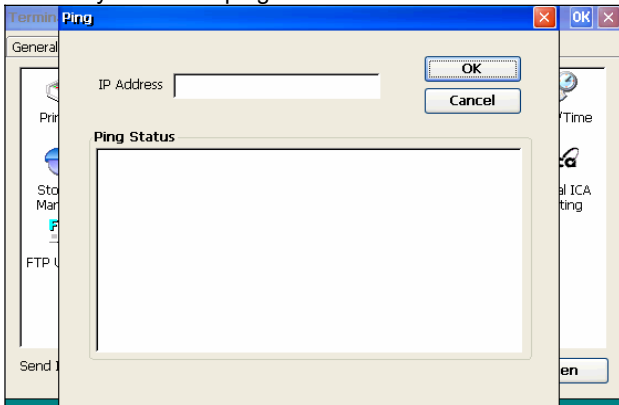


When you disable the **Terminal Connection Manager** function .Your Connection Manager will be hidid.



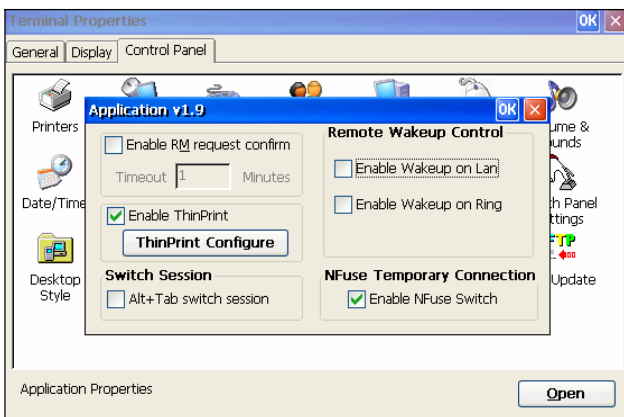
### 6.3.12 Ping Properties

The **Ping Test Settings** sheet lets you ping the IP address to make sure it's on the network. Invoke this setting by clicking on the **Ping** icon of **Terminal Properties** dialog box. The following figure shows the Ping function tag, just type in the IP address you want to ping and click OK.



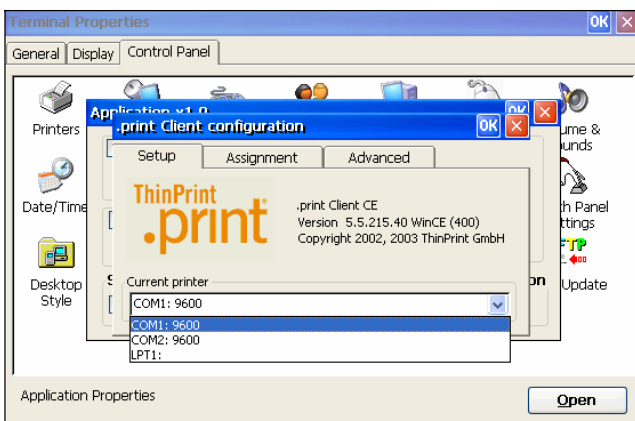
### 6.3.13 Application Properties

Invoke the **Application** Properties sheet by clicking on the **Apps** tab in the **Terminal Properties** dialog box. The following figure shows this sheet. The functions of the **Application** Properties include, Remote Wake-up Control and NFuse Temporary Connection.



#### 6.3.13.1 ThinPrint

In this **Apps** tab you can tick "Enable ThinPrint" to use ThinPrint function in RDP or ICA.



### 6.3.14 Line Printer Daemon Setup

This WBT with WIN CE.NET offers another way of through LPD protocol to send the print job.

LPD is a built-in printing protocol in the BSD type of UNIX. However, it is also available in most UNIX system.

With LPD, users can using UNIX machine for printing purpose or any machine which supports LPD protocol.

#### 6.3.14.1 Setup for LPD

If you plan to use LPD to print your jobs, you need to go through the Setup for LPD procedures as below figure.

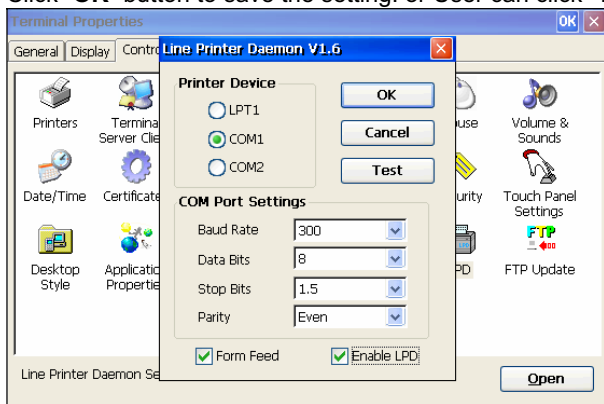
1. Double click “**LPD**” in Control Panel tap.

In the below page, user can select one of the ports, LPT1, COM1 or COM2 port

to be the default printer port. When you select the COM1 or COM2 .You can also select the baud rate of COM1 or COM2 port.

2.Please enable “**Enable LPD**” so the WBT could activate the LPD function.

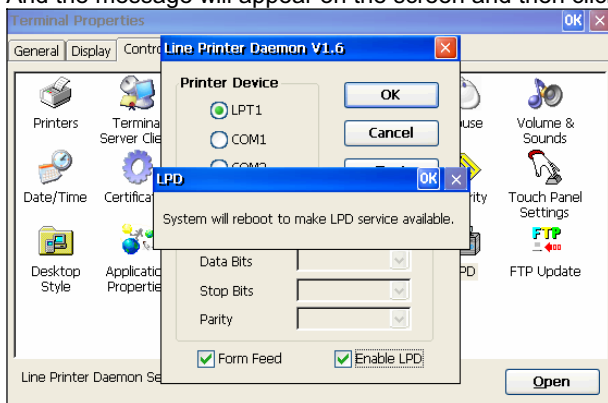
Click “**OK**” button to save the setting. or User can click “**Test**” button to perform test procedure.



3.After completing the saving procedure,

The WBT will automatic reboot to make the LPD service available.

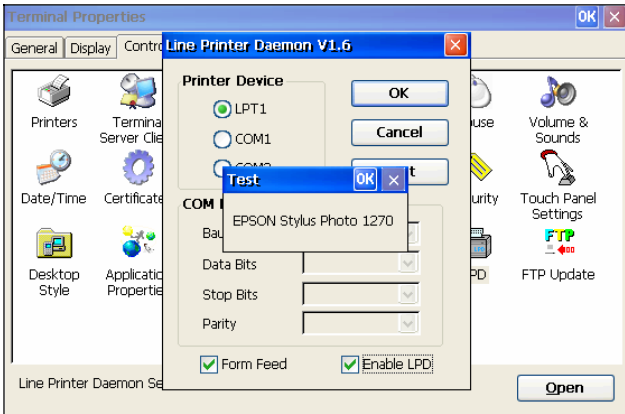
And the message will appear on the screen and then click OK.



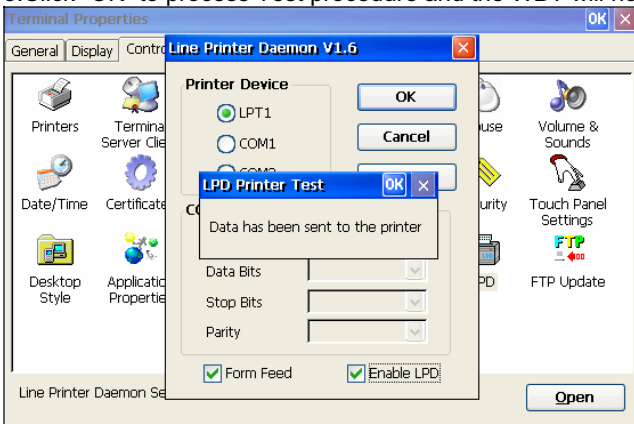
4.Or, user can press “**Test**” button to check if the printer has connected completely as user setting.

If connected completely the printer type name will appear on the screen.

For example: the connected printer is EPSON Stylus Photo 1270.



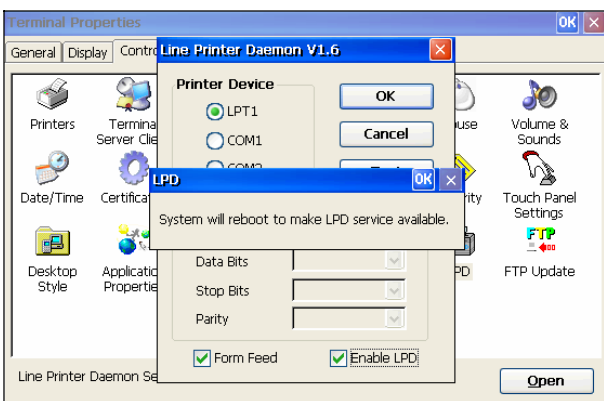
5. Click "OK" to process Test procedure and the WBT will notify user that "the test data has been sent to the printer".



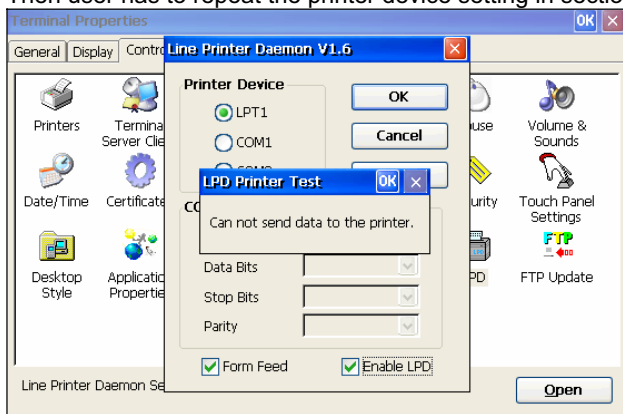
6. Checking the printer then user can find the default characters printed as below.

LPD for CE .NET 4.0 version 1.0  
 =====  
 EPSON Stylus Photo 1270(shows the printer model name as user setup)  
 The quick brown fox jump over the lazy dog.

7. After the Test procedure completely, please click "OK" to save the settings. The WBT will automatic reboot to make the LPD service available. And the message will appear on the screen and then click OK.



8.If the test is fail, the WBT will notify user to check the printer device.  
Then user has to repeat the printer device setting in section 6.5.14.1



### 6.3.14.2 Add a remote printer

To add a remote printer, insert a block similar to the following in the /etc/printcap file.

**For Example:** Use the SCO UNIX x86

```
MyPrinter:\
:lp=\
:rm=:MyPrinter:\
:rp=:MyPrinter:\
sd=/usr/spool/lpd/MyPrinter:\
:mx#0:
```

Note: MyPrinter maybe define in director as below

```
/etc/hosts
192.168.0.95    MyPrinter.    MyPrinter.DOMAIN.com
```

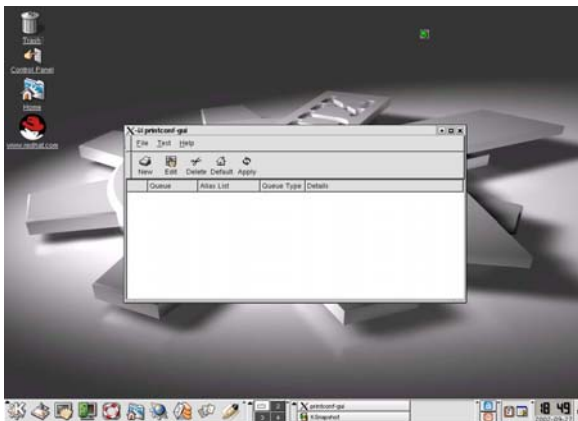
e.g. If it works on a BSD UNIX host and makes the directory /usr/ spool/ETPS1 available, then follow these three procedures:

```
chown daemon /usr/spool/MyPrinter
chmod 775 /usr/spool/MyPrinter
chgrp daemon /usr/spool/MyPrinter
```

**For Example:**

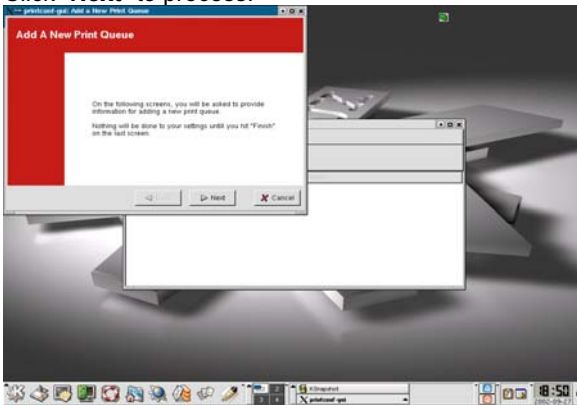
User can setup a printer name and execute a printing instruction using configure tool under the X-Window as below figures.

1.Preform the printer configuration under KDE in Redhat 7.3 O.S. Then click “**New**” button.

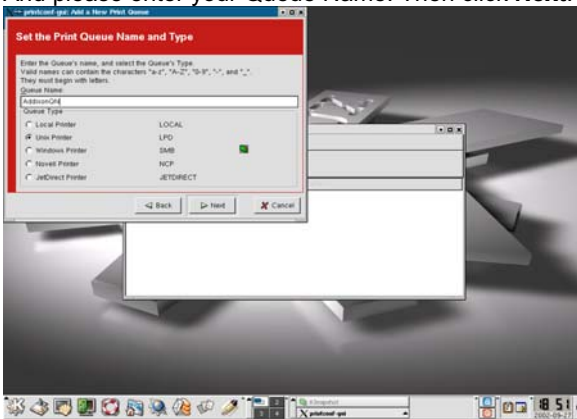




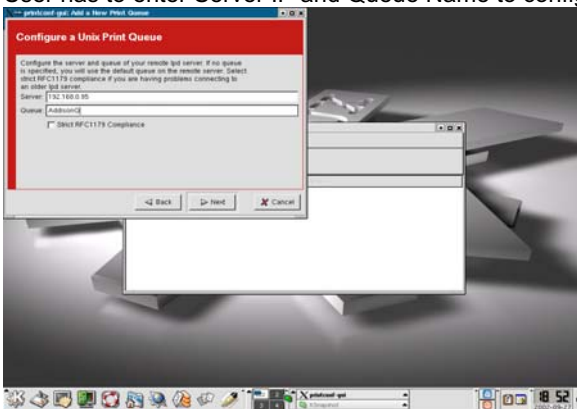
2. On the following screen user will be asked to provide information for adding a new Printer Queue. Click **“Next”** to process.



3. In this “Set the Printer Queue Name and Type” page. Please select the **“Unix Printer”** which supports LPD service. And please enter your Queue Name. Then click **Next**.



4. the “Configure a Unix Print Queue” page will appear. User has to enter Server IP and Queue Name to configure which Server and Queue will be user’s remote LPD server.

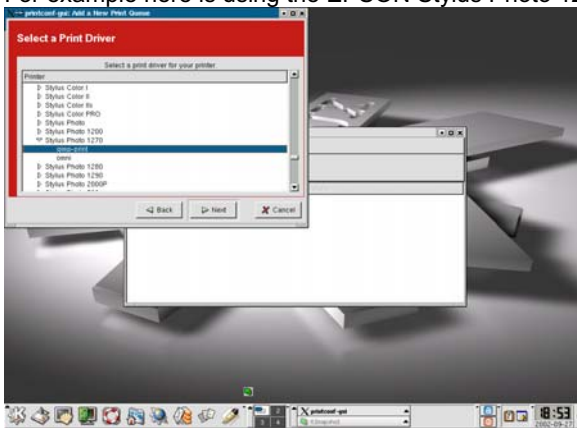



---

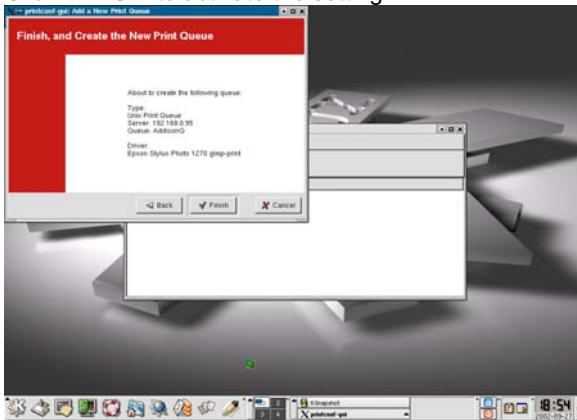
Note: Here the Server IP had defined to be the WBT IP. User has to enter user’s WBT IP in the **“Server”** column.

---

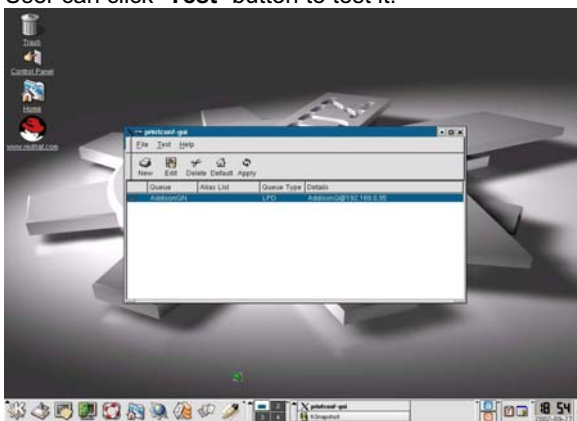
5. Please select a printer driver for user's printer. Then click **"Next"**.  
 For example here is using the EPSON Stylus Photo 1270 printer.



6. After complete the setting, the detail of the Queue which user created will be list. Click **"Finish"** to activate the setting.



7. The new Printer Queue will appear on the printer configure icon. User can click **"Test"** button to test it.



### 6.3.14.3 LPD Printing

Before you use LPD for printing, your Server needs to be installed completely with Setup for LPD in 3 setup for LPD. LPD protocol is built-in to most of the UNIX system. However, detailed implementation of LPD differs among UNIX system. Please refer to your UNIX administration guide for reference. The following illustrated printing command is under BSD system or System V version.

For BSD system: `lpr -P <printer_name><filename>`  
 For System V version: `lp -d <printer_name><filename>`

This command is to print selected file to the selected printer.

**e.g.** `lpr -MyPrinter /etc/hosts` (BSD version) or `lp -d MyPrinter /etc/hosts` (System V version)  
 This example is to print the /etc/hosts file to the Terminal printer.

### 6.3.15 Global ICA Client Settings

This section describes how to change settings that apply for all connection entries on this WBT. It also describes how to change the default settings that are used when creating new ICA connection entries. You may want to do this if you always prefer to use a particular setting; for example, a sound quality that is different from the initial setting or a larger default window size.

The **Global ICA Client Settings** dialog box contains the following tabs:

- The **Default Hotkeys** tab, where you can define custom key combinations for system hotkeys. See “Configuring Hotkeys” for more information.
- The **Preferences** tab, where you can control the default window and settings used for new ICA connection entries. See “Configuring Global Preferences” for more information.
- The **Server Location** tab, where you can configure network protocol and server location options. See “Configuring Network Protocol and Server Location” later in this section.
- The **Firewall Settings** tab, where you can configure the client to use a SOCKS proxy, alternate address re-mapping and SSL Relay address. See “Configuring Firewall Settings” for more information about using the ICA Client with a Firewall.
- The **PNLite Settings** tab, where you can configure the client to switch from Remote Access Manager mode to PNLite mode. In PNLite mode, a list of available published applications on the network is published to the ICA client. This means the user need not configure each connection entry manually. For more information about PNLite Mode.



#### 6.3.15.1 Configuring Hotkeys

This WBT provides users with hotkeys that can be used during ICA sessions to control various functions. Some hotkeys control the behavior of the ICA Windows-based Terminal Client itself while others emulate standard Windows hotkeys. When you want to use a Microsoft Windows key combination during a session, use the mapped hotkey instead. The following table lists the default ICA Windows-based Terminal Client hotkeys.

##### Default ICA WBT Client Hotkeys

| Name              | Default Value | Description                            |
|-------------------|---------------|--|
| Connection Status | CTRL+6        | Displays ICA Client connection status. |

| Name          | Default Value | Description   |
|---------------|---------------|---|
| Close Session | CTRL+2        | Disconnects the ICA Windows-based Terminal Client from the Citrix server and closes the client window on the local desktop. Using this hotkey leaves the ICA session running in a disconnected state on the Citrix server. If you do not want to leave your session running in a disconnected state, log off instead. |
| Esc           | CTRL+3        | Alternately hides and displays the ICA session window .   |
| CTRL-ALT-DEL  | CTRL+4        | Displays the <b>Windows NT Security</b> dialog box on the Citrix server.  |
| CTRL-ESC      | CTRL+5        | On MetaFrame servers, the Windows <b>Start</b> menu is displayed. On <i>WINFRAME</i> servers, this hotkey displays the <b>Task List</b> .   |
| ALT-ESC       | CTRL+7        | This hotkey cycles the focus through the minimized icons and open windows of applications run in your ICA session.  |
| ALT-TAB       | CTRL+8        | This hotkey cycles through all applications in the ICA session. A pop-up box appears and displays the programs as you cycle through them. The selected application receives keyboard and mouse focus.   |
| ALT-BACKTAB   | CTRL+9        | Like the ALT+TAB hotkey, this key sequence cycles through applications that have been opened in the ICA session, but in the opposite direction. The chosen application receives keyboard and mouse focus.   |

**To Change the Default Hotkeys**

- a. Click on the icon of **Global ICA Client Settings** and the dialog box will appear as below.
- b. On the **Hotkeys** page, use the lists of keys to customize the default hotkey key sequences.
- c. Click **OK** to save your changes.



- d. Make the desired changes.
- e. Click **OK** to save your changes.

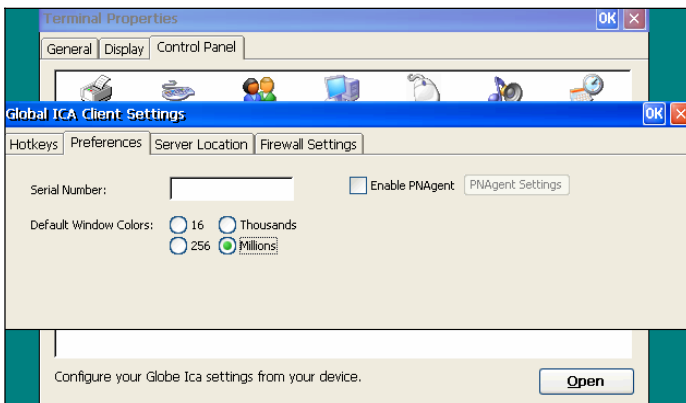
### 6.3.15.2 Configuring Global Preferences

The following settings are configured in the global **Preferences** tab:

- ✓ **Default Window Colors:** In the **Window Colors** box, select 16,256, Thousands or Millions colors by clicking the appropriate radio button. When using a low-bandwidth connection, 16-color mode may provide better performance. This WBT can support up to Millions colors that is superior to other WBTs in the market.
- ✓ **Serial Number.** This is the serial number of your ICA Client software. This number is only necessary when you are using the ICA Windows-based Terminal Client with a product such as *WINFRAME* Host/Terminal, which requires each ICA Client to have a Citrix PC Client Pack serial number. If a serial number is required, you must enter it exactly as it appears on the Serial Number card. The serial number is not used when connecting to MetaFrame servers.
- ✓ **Client Name.** This box allows you to set the name of your client device. Citrix servers use the client name to uniquely identify resources (such as mapped printers) associated with a given client device. The client name should be unique for each computer running a Citrix ICA Client. If you do not use unique client names, device mapping and application publishing may not operate correctly.

#### To Change the Default Global Preferences for All ICA Connection Entry

- a. Click the **Preferences** tab.



- b. Make the desired changes.
- c. Click **OK** to save your changes.

### 6.3.15.3 Server Location

This section explains how to:

- a. Set the protocol the ICA clients uses
- b. Control the way in which the ICA client locates Citrix servers
- c. Configure a list of Citrix servers for Business Recovery

The network protocol settings allow you to control the way the ICA client searches for Citrix server and how it communicates with them. Server location (also called server browsing) provides a method for a user at a network-connected ICA Client to view a list of all Citrix servers on the network that have ICA connections configured, and a list of all published applications. The way in which server location works depends on which network protocol has been configured:

- ✓ **TCP/IP** – The client uses the UDP protocol to search for Citrix servers. The client communicates with the Citrix server using ICA protocol over TCP/IP. This is the default protocol.
- ✓ **TCP/IP + HTTP** – The client uses the HTTP protocol to locate Citrix servers. The client communicates with the Citrix server using ICA protocol over TCP/IP. Select this option when using the ICA Client over the Internet or via a firewall or proxy server.

- ✓ **SSL + HTTPS** – The client uses the HTTPS protocol to search for a list of Citrix servers. The client communicates with the Citrix server using ICA with SSL. SSL+HTTPS provides strong encryption of ICA traffic and Citrix server authentication. Select this option when using the ICA Client over the Internet or via a firewall or proxy server.

**Note** The TCP/IP+HTTP and SSL+HTTPS protocols can only be used with compatible Citrix servers. Check the Citrix server administrator's guide for further information.

**Note** When the CTP/IP or TCP/IP+HTTP protocols are selected, the ICA protocol can be encrypted using SecureICA.

Business recovery provides consistent connections to published applications in the event of a master ICA Browser server disruption. You can define up to three groups of Citrix servers to which you want to connect: a primary and two backups. Each group can contain from one to five servers.

When you build a new ICA connection, the ICA client in this WBT will automatically search for any Citrix server on the network. The default setting is TCP browser but you can make desired change at this page. It depends on what kind of protocol of your Citrix server. If you can't find by this protocol, scroll through the list and try other protocols. This will change the default protocol setting of ICA client when searching for Citrix server location.



### 6.3.15.4 Firewall Settings

This is to configure a default SOCKS proxy server, if you would like to configure a SOCKS proxy server for a specific ICA connection entry, please refer to the description mentioned earlier in section 4.5.3.

To Configure a Default SOCKS Proxy Server

- a. Tick **Connect via SOCKS proxy**.
- b. In the **Address of proxy to use** box, enter the SOCKS proxy server's IP address.
- c. In the **Port** box, enter the proxy server's port number (if different than 1080).
- d. Click **OK** to save your changes.



**Note** If you configure a default SOCKS proxy server, you must specify at least one server in the **Server Location** tab for server and published application browsing to work.

### Configuring Alternate Address Translation

If the ICA Client is outside a firewall that uses address re-mapping, you must configure the ICA Client to use the alternate address returned by the master ICA Browser. This is necessary even if you are not using a SOCKS proxy server.

**Note** You must also use the ALTADDR utility to manually set the alternate address for each Citrix server, See the Command Reference appendix of either the *MetaFrame Administrator's Guide* or the *WINFRAME System Guide* for more information.

**Note** If you set alternate address translation for all connection entries, it cannot be disabled for specific connection entries.

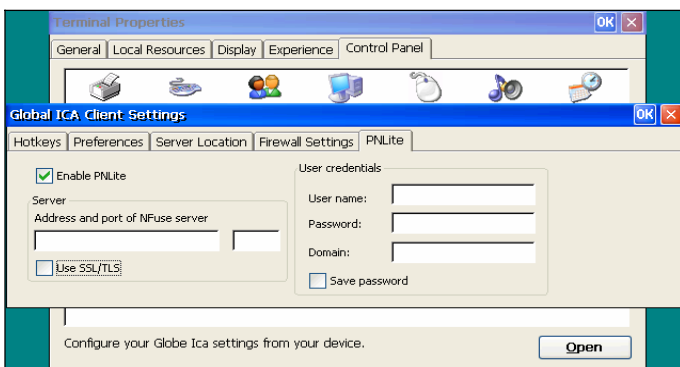
### To Use Alternate Address Translation for All Connection Entries

- Press **F2** to enter the **Terminal Properties** page, click **Apps** tab and then click **Global ICA Client Settings** icon.
- Click the **Firewall Settings** tab.
- Click **Use alternate address for firewall connection**.
- Click **OK** to save your changes.



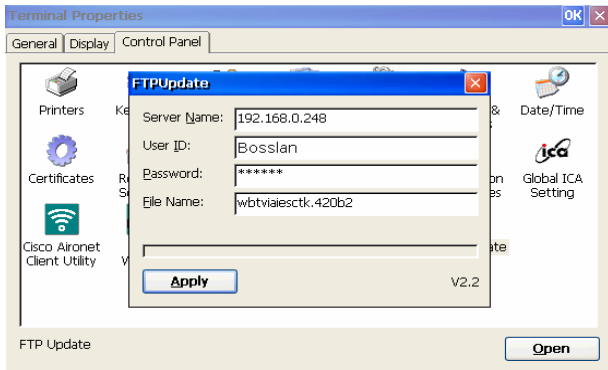
### 6.3.15.5 PNLite Settings

This **PNLite Settings** can configure the client to switch from Remote Access Manager mode to PNLite mode. In PNLite mode, a list of available published applications on the network is published to the ICA client. This means the user need not configure each connection entry manually. For more information about PNLite, see PNLite Mode.



### 6.3.16 FTP Update Update Configuration

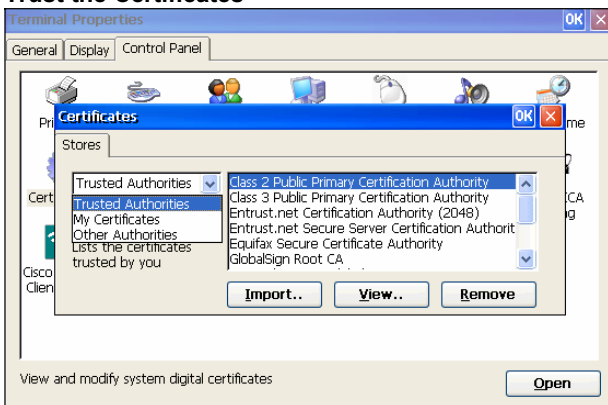
The Update Configuration sheet lets you update new firmware. Key in **Server Name**, **File Name**, **User ID** and **Password** which your new firmware loaded, select **Save Password**, then above data will be saved in the sheet. Click **Update Now** icon, the update Status will be show in the Status Window. This WBT has outstanding function that allows FTP updating the latest BIOS/bootloader. The procedure is the same with updating firmware showing as above. Make sure the file name is correct.



### 6.3.17 Certificates

Certificates is the basic component of Microsoft PKI . and the main purpose is to assure secret . Users can be granted authorization to browse the web or to enter a sever by getting certificates.

#### Trust the Certificates



Certificates function offers user to import, view and remove certificates which have be issued , control , renew and revoke by CA.

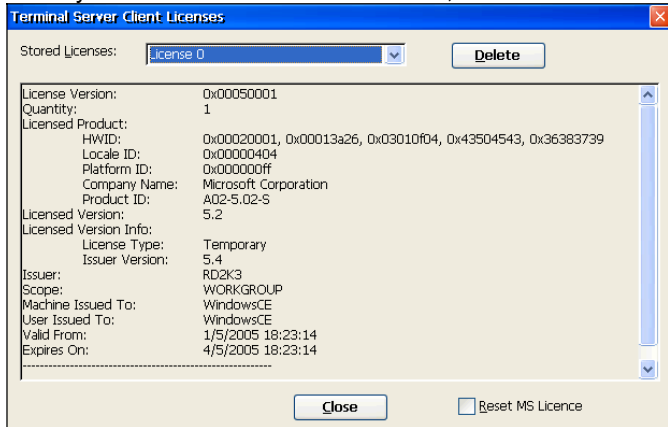


### 6.3.18 Terminal Service Client License

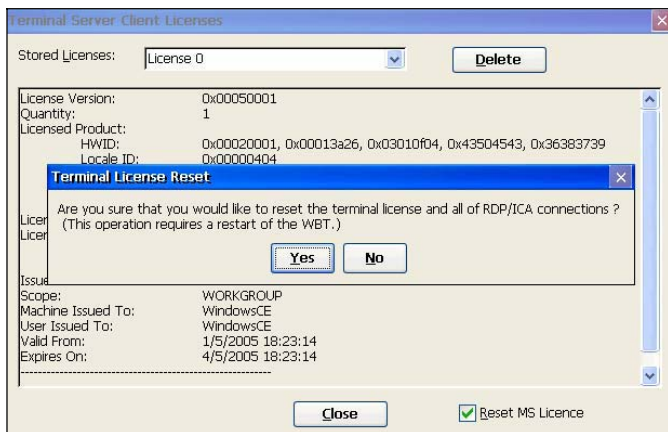
In this **Apps** tab you can check and set TSCAL (Microsoft Terminal Service Client Access License).



When you receive a license from a server, the license info will be appeared in this dialog.



In this **Apps** tab you can tick “Reset MS License” whenever you have the problem gaining valid TSCAL(Microsoft Terminal Service Client Access License). The system will request a reboot to take effect the setting change. After reboot, all connections you have set up before will be lost; you will have to rebuild the connections.

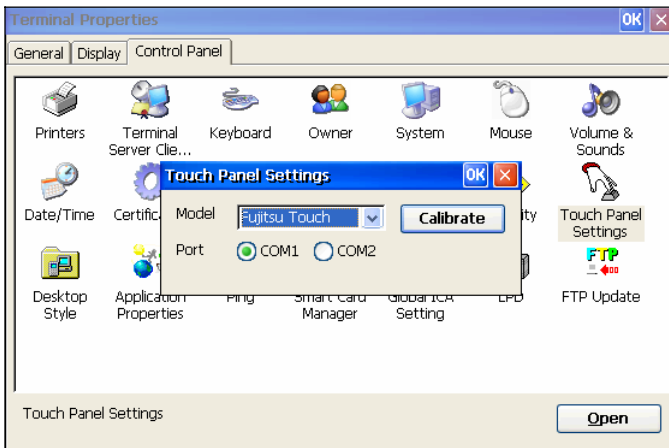


### 6.3.19 Touch Panel Settings

The user can use the touch panel that has been supported in the **Apps**.



Press **OK** to Enable touch panel, and press **Calibrate** to alignment.

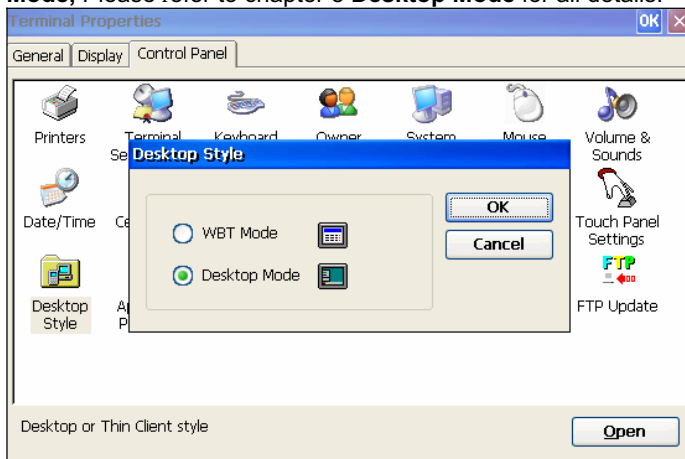


### 6.3.20 Desktop Style

**Desktop Style** is an **App**, which can switch Desktop Mode and WBT Mode to each other.



Enable the **Desktop Mode** and press **OK** to restart the thin client, and then the thin client will be appears with **Desktop Mode**, Please refer to chapter 8 **Desktop Mode** for all details.



## 7 Using ICA Local Printer

You can access printers attached to your client computer from an ICA session. When a Citrix server is configured to allow client printer mapping, applications running remotely on the Citrix server can print to local printers.

**Note** If your Windows-based terminal includes a list of printer drivers you can select the printer driver from the Printer tab of the Terminal Properties dialog box. When you print from an application, the associated driver is used on the Citrix server. You will need to install the driver on the Citrix server.

### 7.1 Mapping Client Printers on MetaFrame for Windows

Before users print out from MetaFrame for Windows, printing must be enabled by the administrator. This section describes how to enable printing on the server.

#### 7.1.1 To view mapped client printers when connected to a MetaFrame server

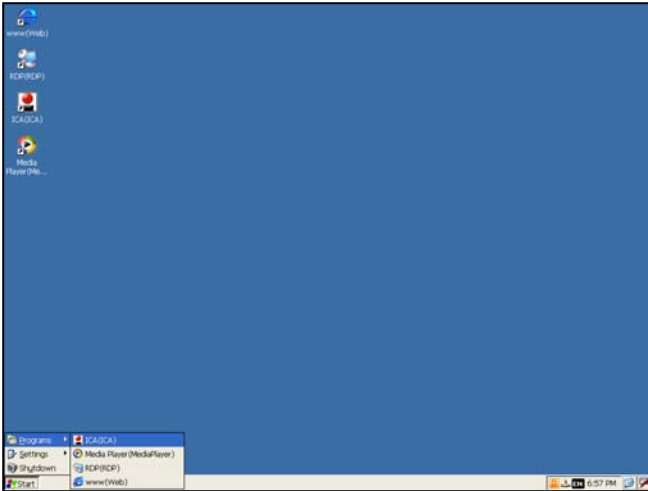
While connected to a MetaFrame server, double-click My Computer on the remote desktop and then double-click Printers. The Printers dialog box appears. The Printers dialog box displays the mapped local printers along with any other printers available on the MetaFrame server. The name of the printer is **clientname#port**, where **clientname** is the name you have assigned to your ICA Client and **port** is the printer port on your Windows CE device, for example COM1 or LPT1.

#### 7.1.2 To manually map a client printer on a MetaFrame server

- a. Log on to the Citrix server.
- b. On a MetaFrame server, click Start, Programs, MetaFrame Tools, and then ICA Client Printer Configuration.
- c. On the Printer menu, click New to display the Add ICA Client Printer wizard. Follow the steps in the wizard to map the client printer.

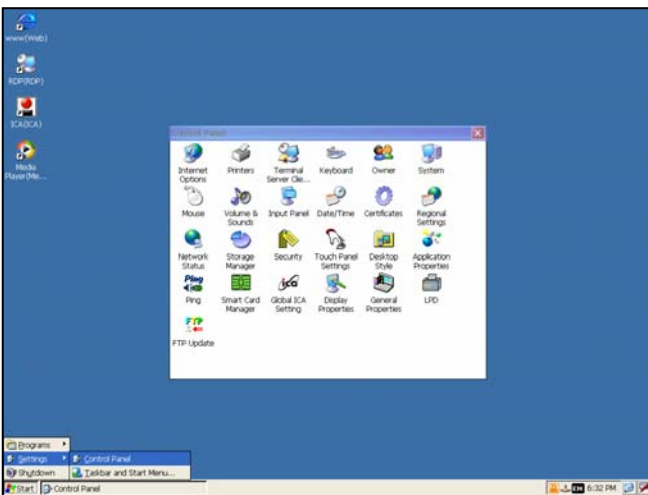
## 8. Desktop Mode

When you switch to the Desktop mode, you will see the figure as below. All connections that you have created in WBT mode will also appear in Desktop mode.



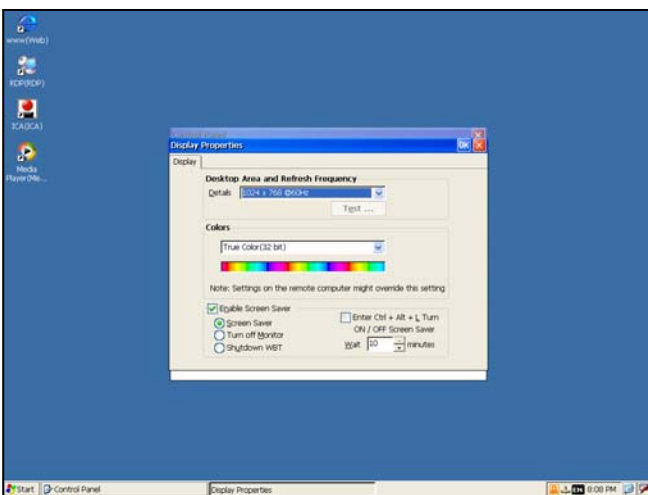
### 8.1 Control Panel

By clicking Start→Settings, and you will see the “Control Panel”. These functions are the same as WBT mode.



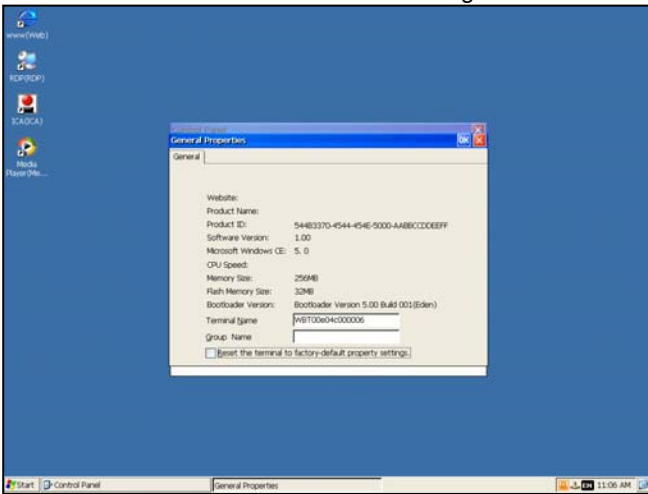
#### 8.1.1 Display Properties

In the Control Panel, you can find the option “Display Properties”. You can click it to set your resolution and screen saver.



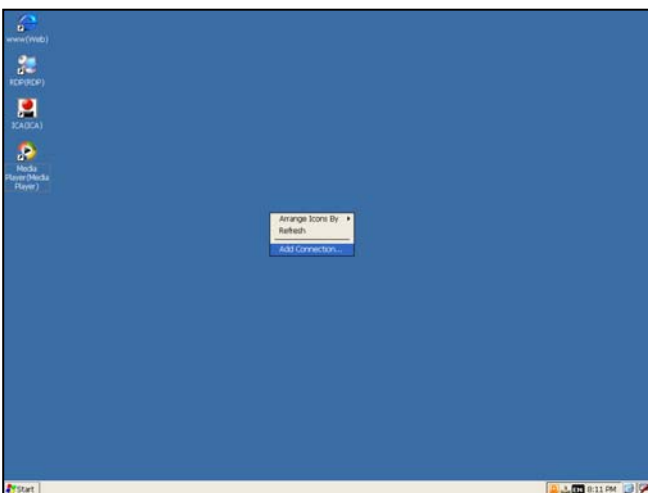
### 8.1.2 General Properties

In the Control Panel, you can find the option “General Properties”. You can click it to view the system and device info and You can reset the default value in this dialog box.

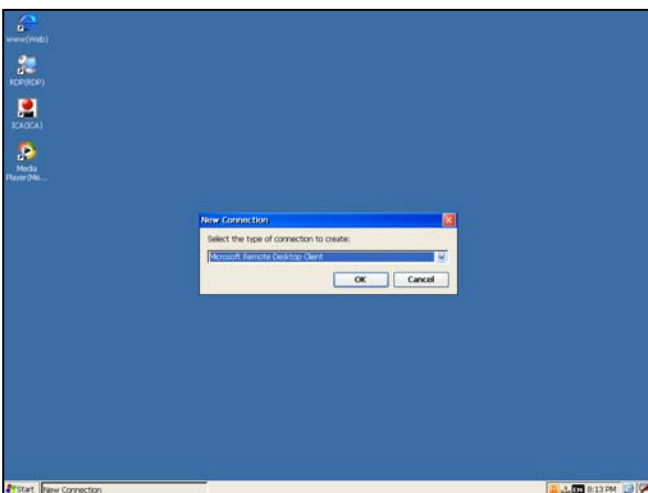


### 8.2 Add a Connection

If you want to add a connection on Desktop mode, you can right click the mouse and select the option “Add Connection...”



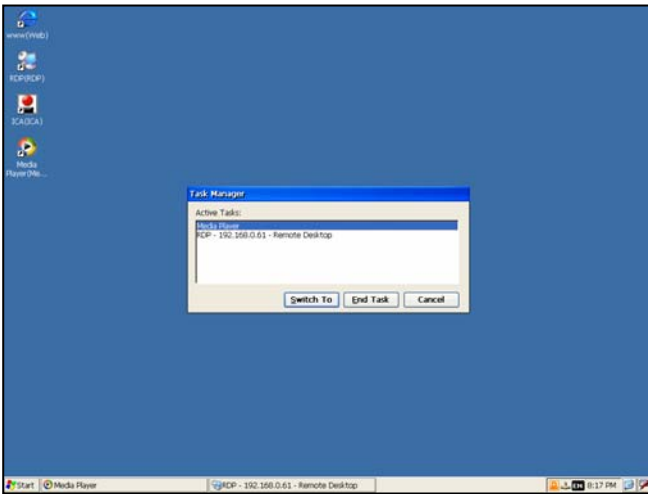
When you click the option “Add Connection...” you will see the figure as below. And you can add the connections that you want.



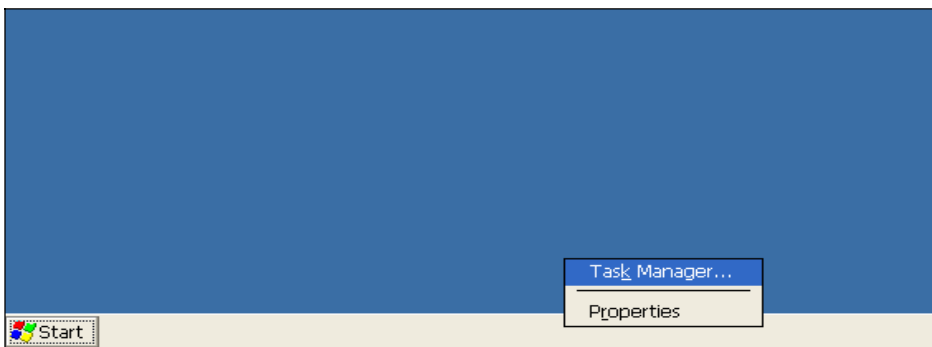
### 8.3 Advanced Function on Desktop Mode

#### 8.3.1 Task Manager

Task Manager is a utility, which provides a quick overview of what applications is currently executing. You can press the "Ctrl + Alt + Del" to use this function.

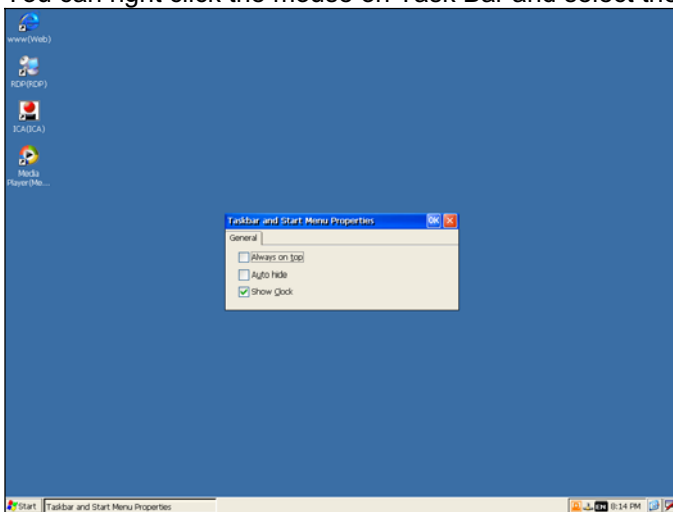


Or you can right click the mouse on Task Bar to select the Task manager.



#### 8.3.2 Task Bar

You can right click the mouse on Task Bar and select the properties to set.



### 8.3.3 Hot Key Functions

**Ctrl+Alt+End:**

Use this function to go back to the Desktop.

**Alt+Tab:**

Use this function to use Task Manager.

